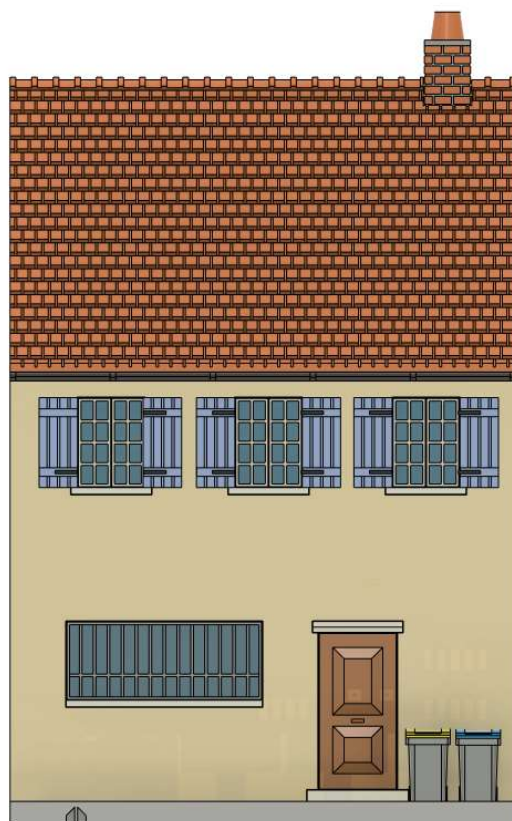
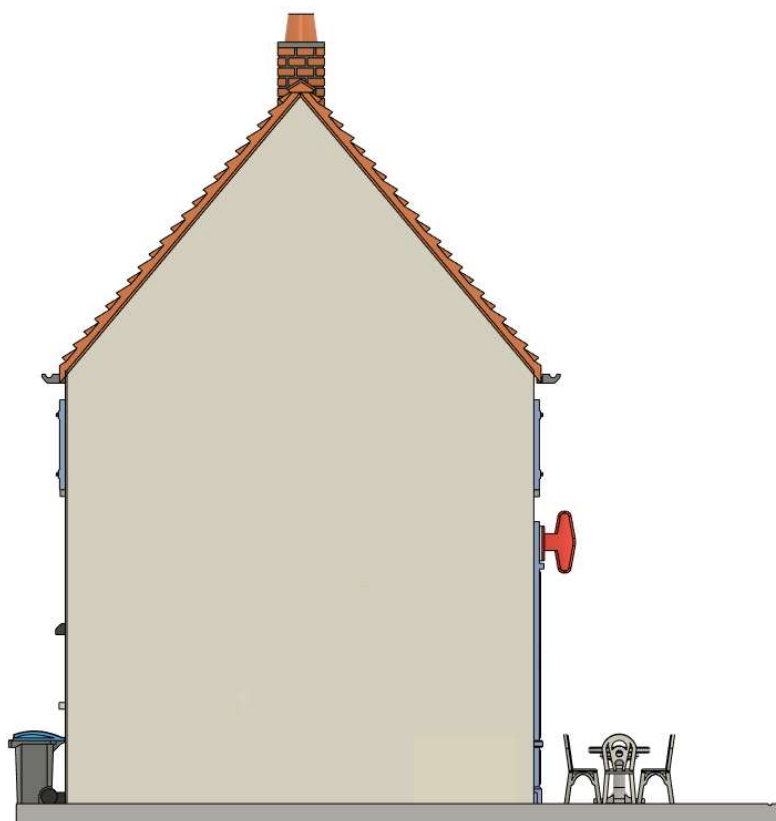


# Bistrot le Balto



# Bistrot le Balto



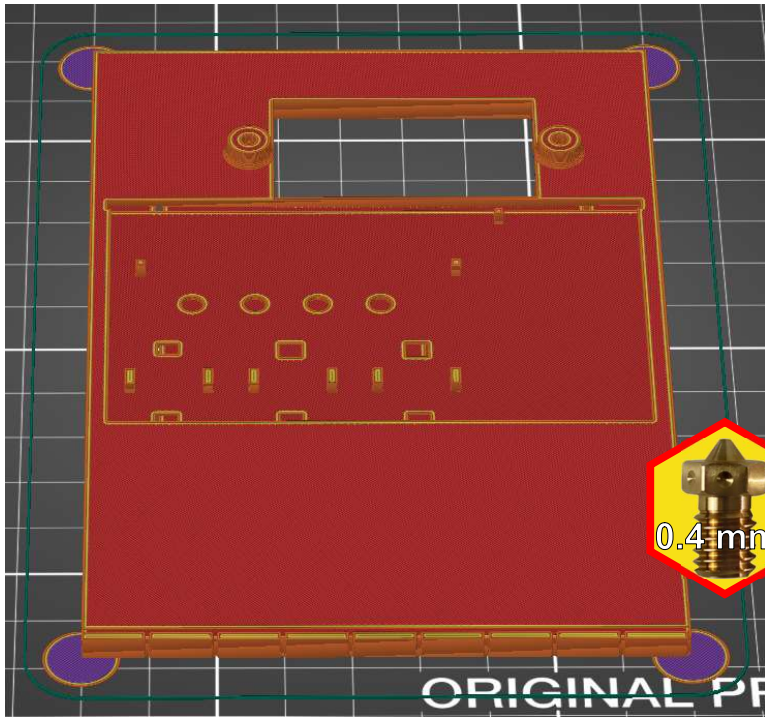
En rouge des aides à  
l'impression à supprimer  
Utiliser un cutter bien aiguisé



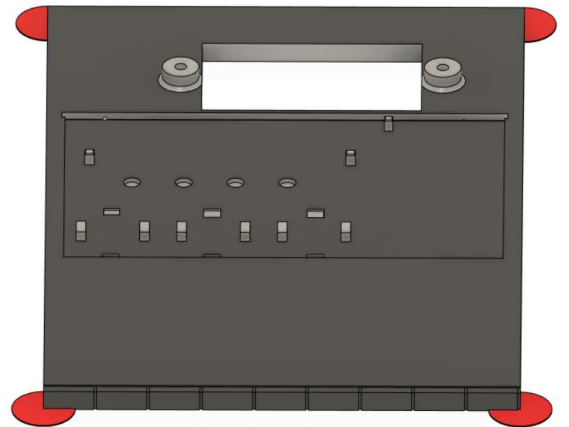
A imprimer avec  
une buse de 0.25 mm maximum



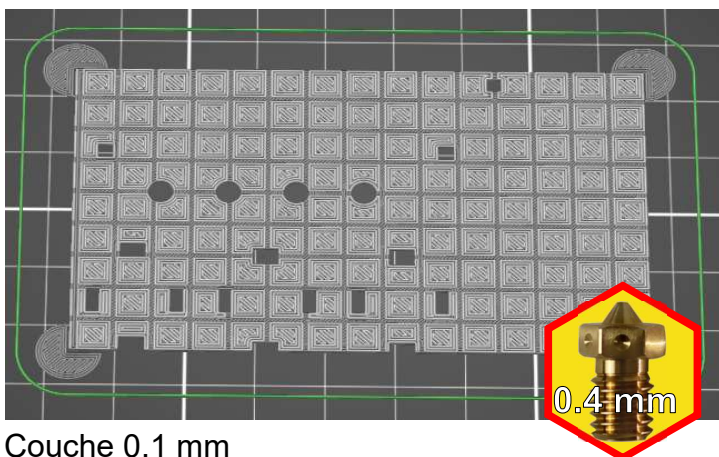
A imprimer avec  
une buse de 0.4 mm maximum



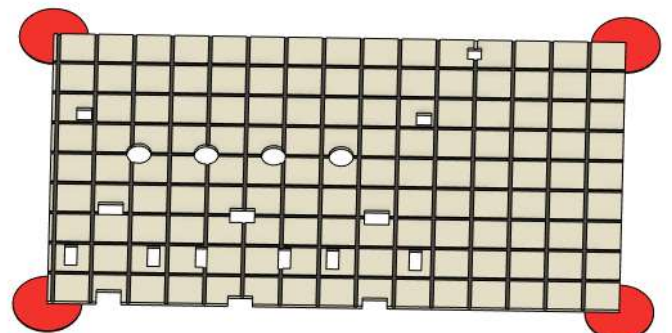
Couche 0.2 mm  
Remplissage 10 %  
sans support  
Pla gris foncé



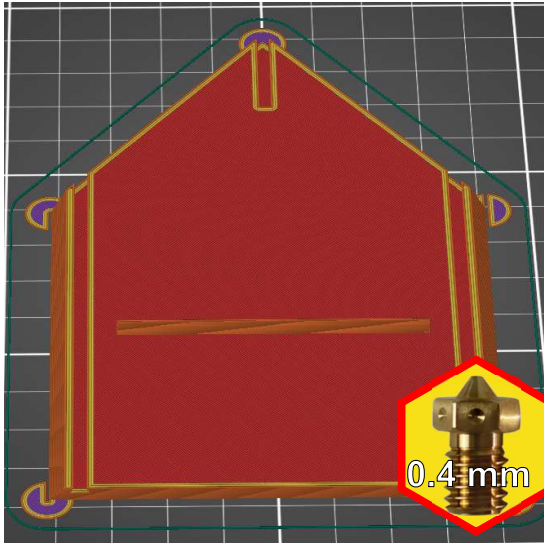
[sol bistrot.stl](#)



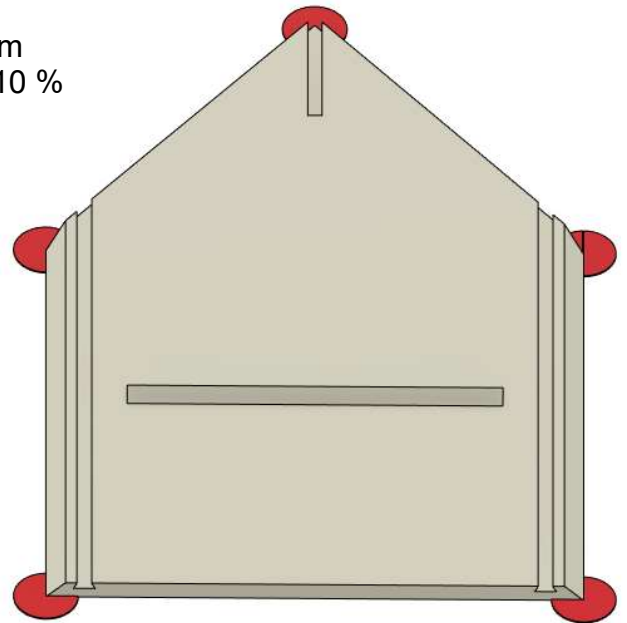
Couche 0.1 mm  
Remplissage 10 %  
sans support  
Pla gris foncé < 0.7 mm  
blanc >= 0.7 mm



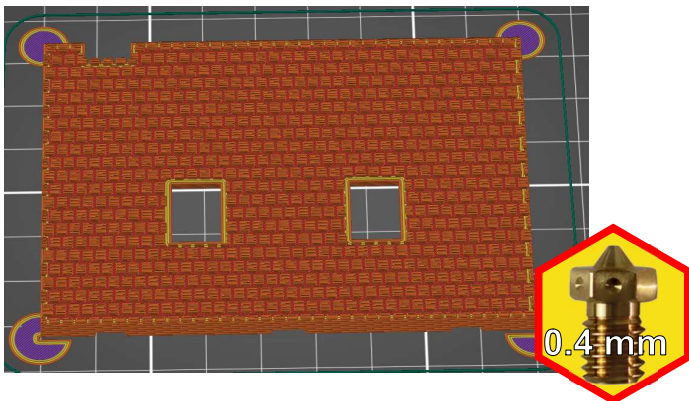
# Bistrot le Balto



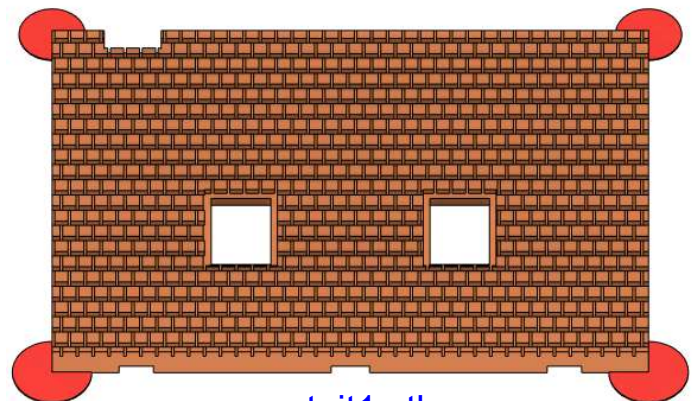
Couche 0.2 mm  
Remplissage 10 %  
sans support  
Pla blanc



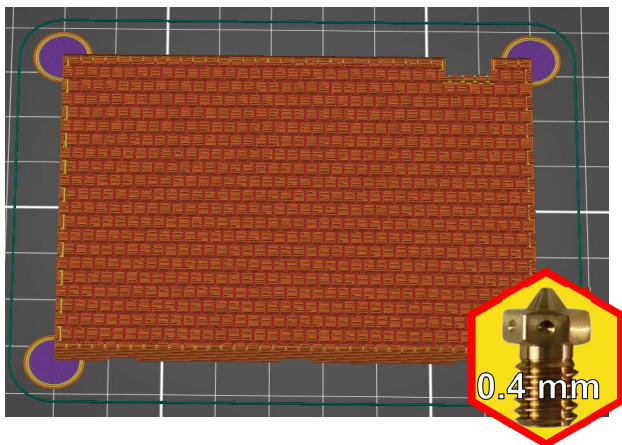
[pignon.stl](#)  
à imprimer 2 x



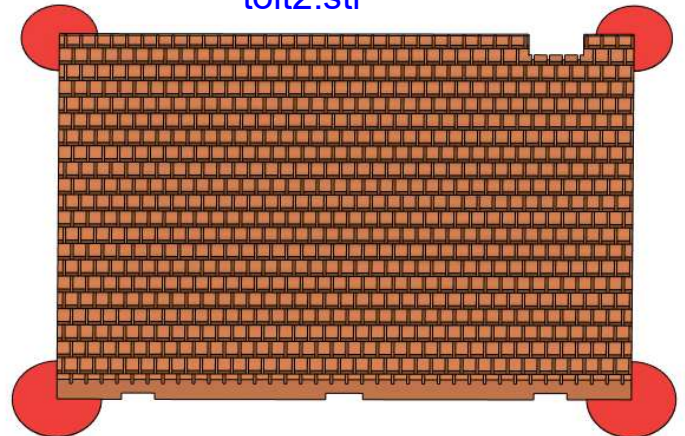
Couche 0.1 mm  
Remplissage 10 %  
sans support  
Pla brique



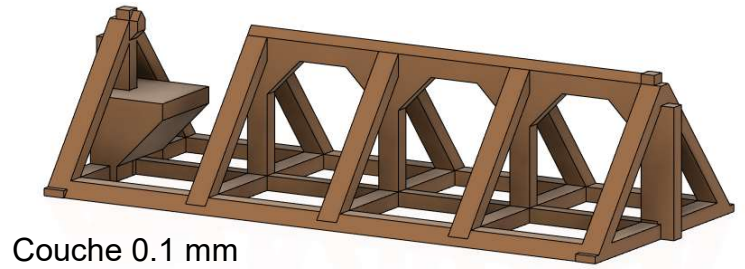
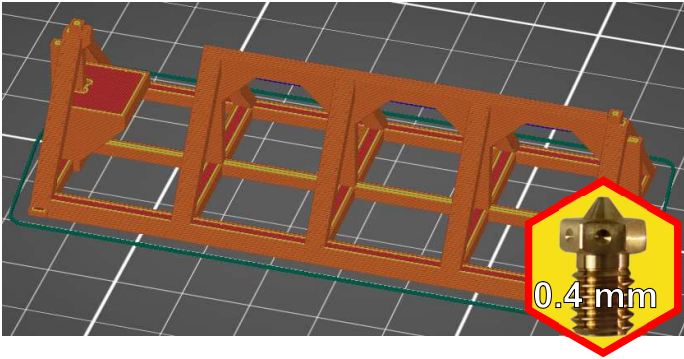
[toit1.stl](#)



[toit2.stl](#)

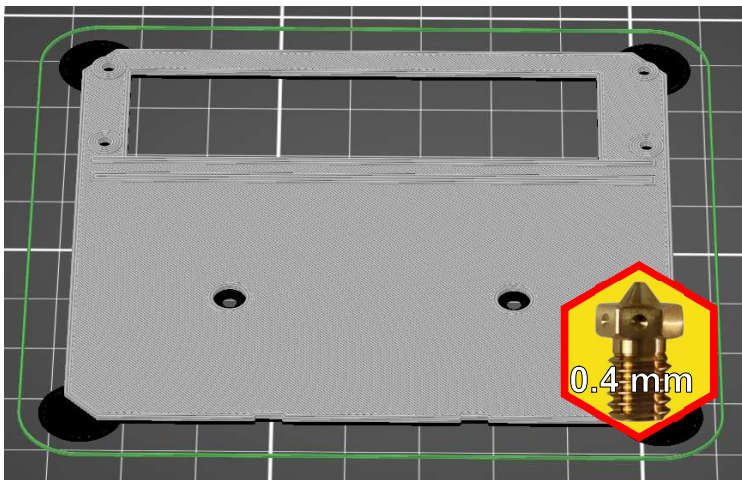


# Bistrot le Balto

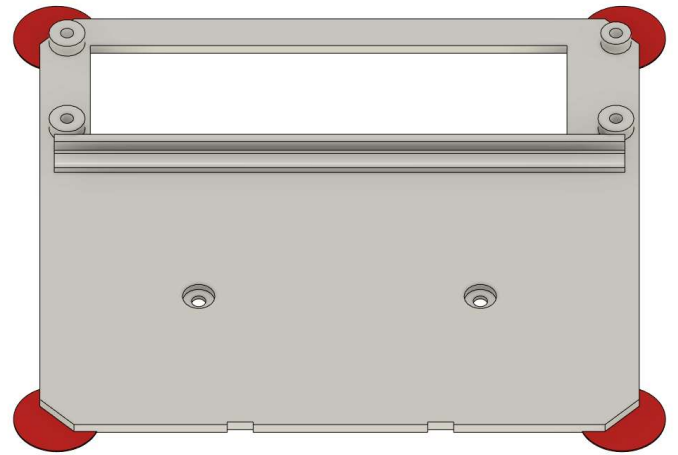


Couche 0.1 mm  
Remplissage 10 %  
sans support  
Pla marron

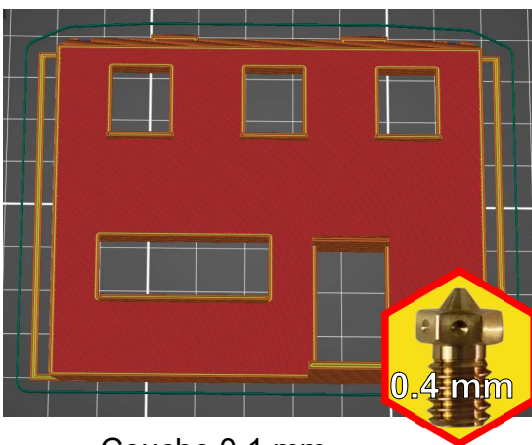
[charpente.stl](#)



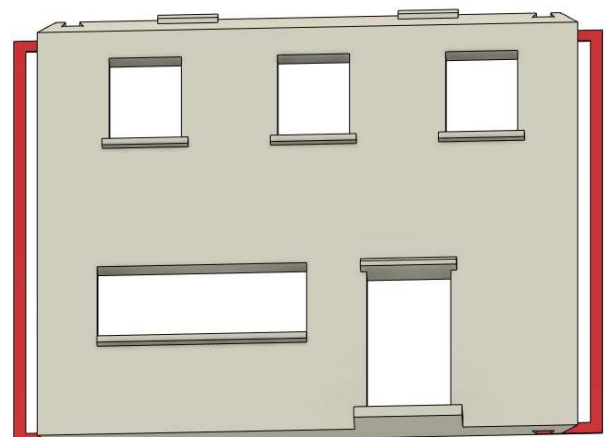
Couche 0.1 mm  
Remplissage 10 %  
sans support  
Pla noir < 1 mm  
blanc > = 1mm



[plancher etage.stl](#)

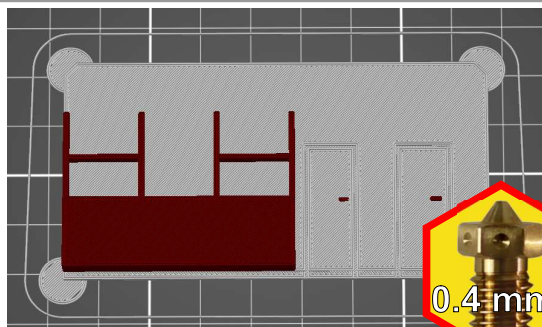


Couche 0.1 mm  
Remplissage 10 %  
sans support  
Pla blanc



[facade arriere.stl](#)

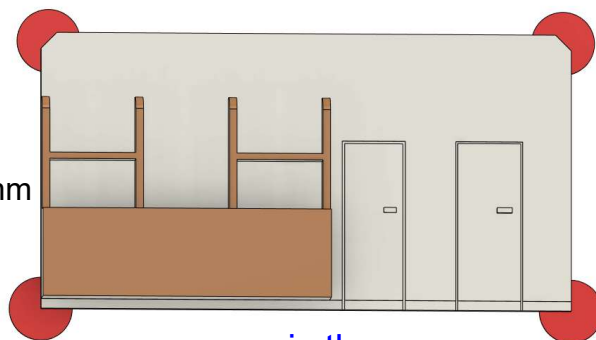
# Bistrot le Balto



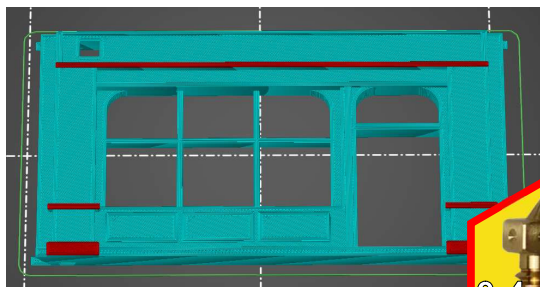
Couche 0.2 mm  
Remplissage 10 %  
sans support  
Pla blanc < 1.6 mm  
marron >= 1.6 mm



0.4 mm



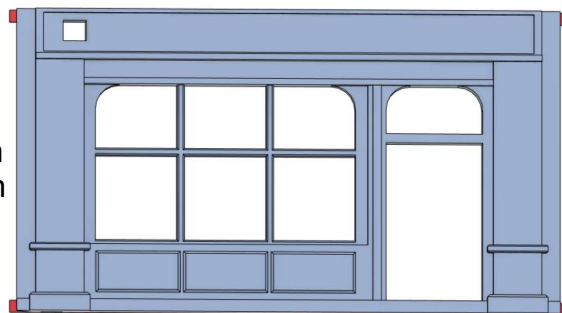
paroi.stl



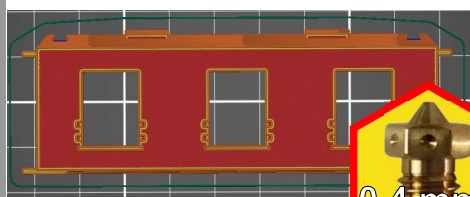
Couche 0.2 mm  
Remplissage 10 %  
sans support  
Pla bleu < 4.1 mm  
rouge >= 4.1 mm



0.4 mm



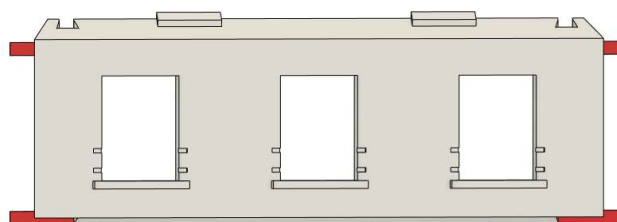
facade bas.stl



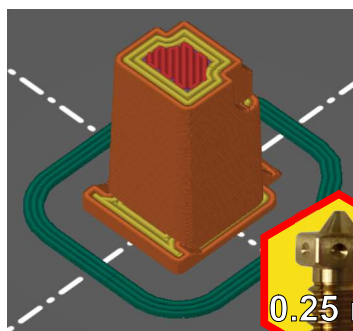
Couche 0.2 mm  
Remplissage 10 %  
sans support  
Pla blanc



0.4 mm

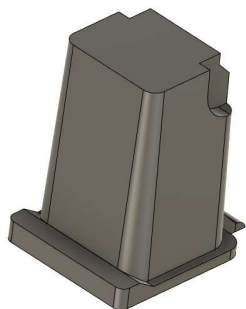


facade haut.stl



0.25 mm

Couche 0.1 mm  
Remplissage 10 %  
sans support  
Pla noir



cuve poubelle.stl



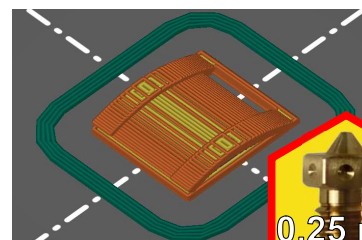
0.25 mm

Couche 0.1 mm  
Remplissage 10 %  
sans support  
Pla noir

roue.stl

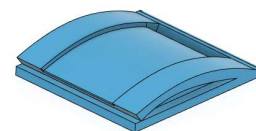


à imprimer 2x



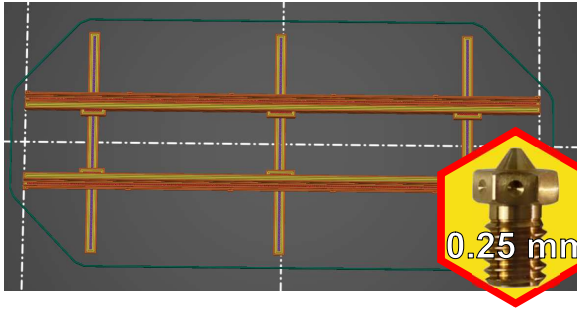
0.25 mm

Couche 0.05 mm  
Remplissage 10 %  
sans support  
Pla bleu

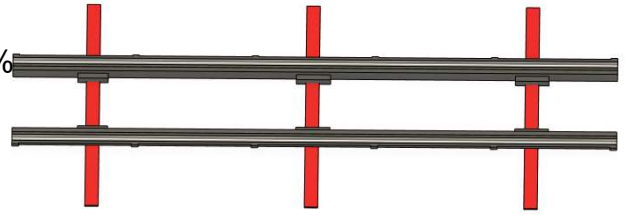


couvercle poubelle.stl

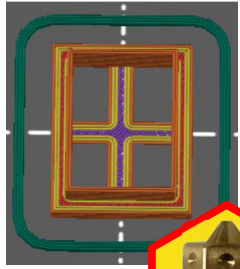
# Bistrot le Balto



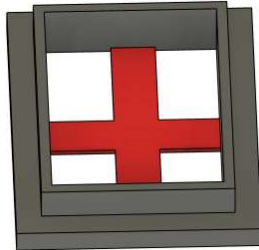
Couche 0.1 mm  
Remplissage 10 %  
sans support  
Pla argent



chaineau.stl

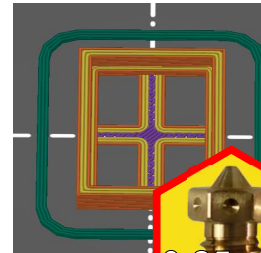


0.25 mm

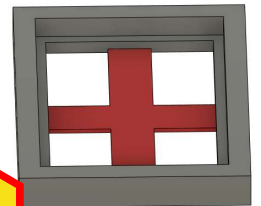


velux bas.stl  
à imprimer 2 x

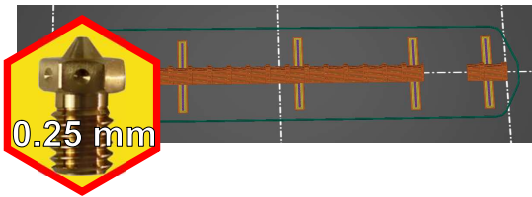
Couche 0.1 mm  
Remplissage 10 %  
sans support  
Pla noir



0.25 mm

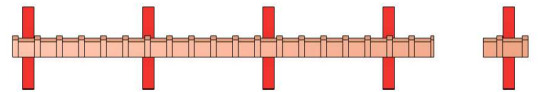


velux haut.stl  
à imprimer 2 x

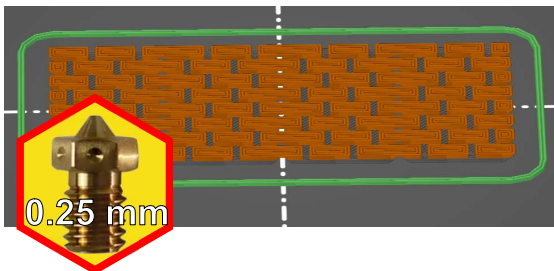


0.25 mm

Couche 0.1 mm  
Remplissage 10 %  
sans support  
Pla brique

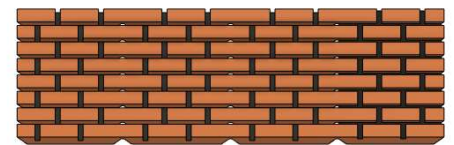


faitiere.stl

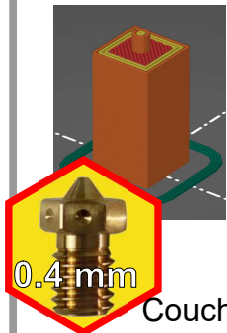


0.25 mm

Couche 0.1 mm  
Remplissage 10 %  
sans support  
Pla gris foncé < 0.5 mm  
brique >= 0.5 mm



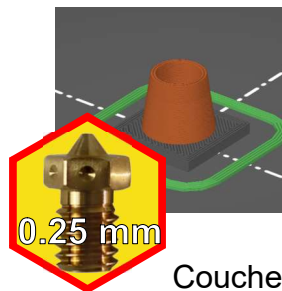
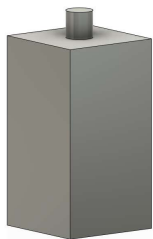
cheminee.stl



0.4 mm

centre cheminee.stl

Couche 0.1 mm  
Remplissage 10 %  
sans support  
Pla gris foncé



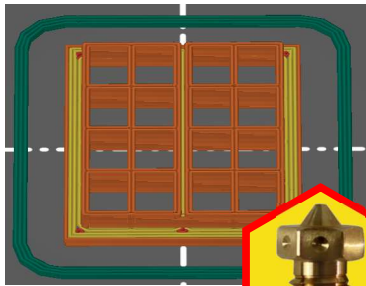
0.25 mm



chapeau.stl

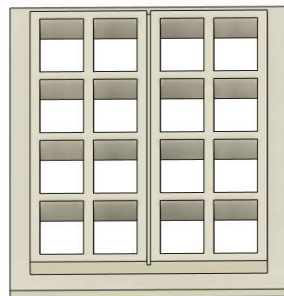
Couche 0.1 mm  
Remplissage 10 %  
sans support  
Pla gris foncé < 1.1 mm  
brique >= 1.1 mm

# Bistrot le Balto

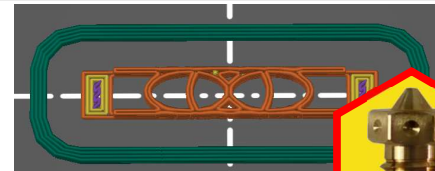


Couche 0.1 mm  
Remplissage 10 %  
sans support  
Pla blanc

0.25 mm



fenetre haut.stl  
à imprimer 6 x

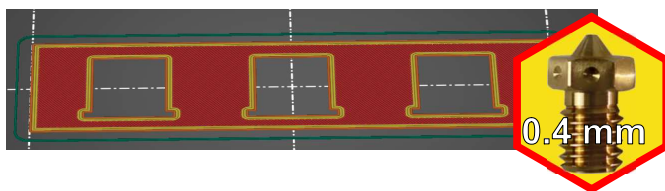


Couche 0.1 mm  
Remplissage 10 %  
sans support  
Pla noir

0.25 mm

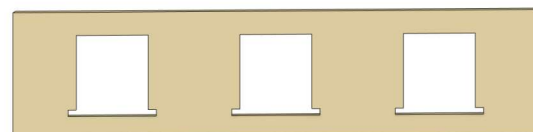


rambarde.stl

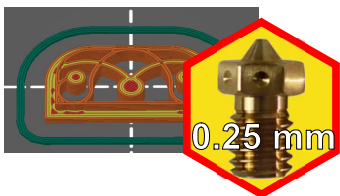


Couche 0.1 mm  
Remplissage 10 %  
sans support  
Pla beige

0.4 mm

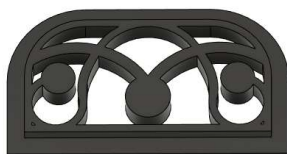


crepi avant.stl

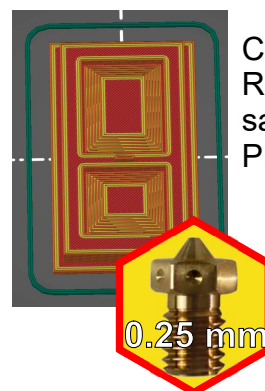


Couche 0.1 mm  
Remplissage 10 %  
sans support  
Pla noir

0.25 mm

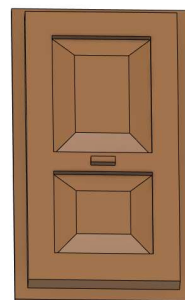


vasistas.stl

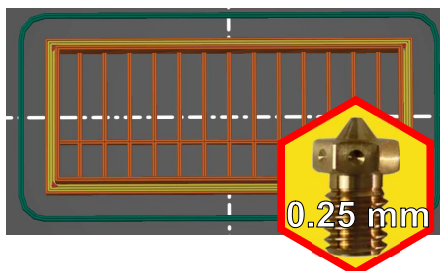


Couche 0.1 mm  
Remplissage 10 %  
sans support  
Pla marron

0.25 mm

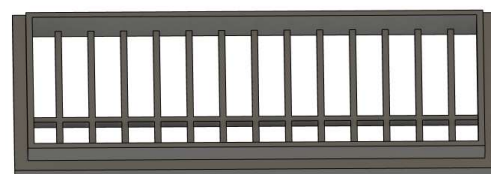


porte arriere.stl

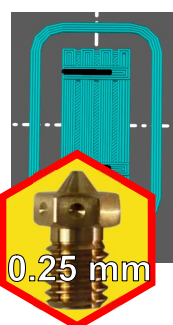


Couche 0.1 mm  
Remplissage 10 %  
sans support  
Pla noir

0.25 mm



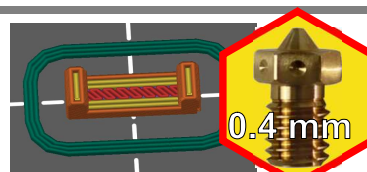
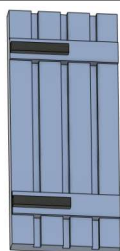
fenetre arriere.stl



Couche 0.05 mm  
Remplissage 10 %  
sans support  
Pla bleu < 1.25 mm  
noir >= 1.25 mm

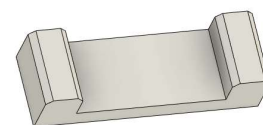
0.25 mm

volet.stl  
a imprimer 12 x



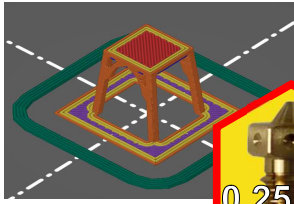
Couche 0.1 mm  
Remplissage 10 %  
sans support  
Pla blanc

0.4 mm



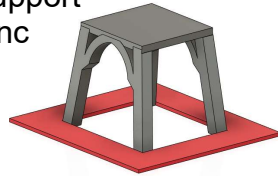
clef facade.stl

# Bistrot le Balto

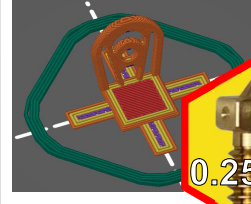


Couche 0.1 mm  
Remplissage 10 %  
sans support  
Pla blanc

0.25 mm

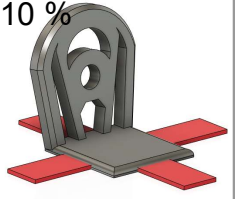


[assise chaise.stl](#)

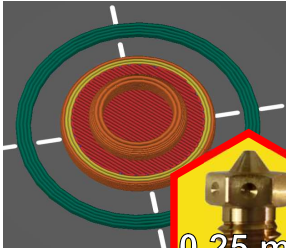


Couche 0.1 mm  
Remplissage 10 %  
sans support  
Pla blanc

0.25 mm

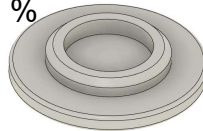


[dossier.stl](#)



Couche 0.1 mm  
Remplissage 10 %  
sans support  
Pla blanc

0.25 mm

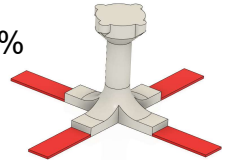


[table.stl](#)

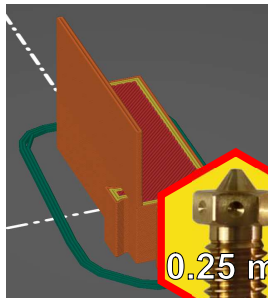


Couche 0.1 mm  
Remplissage 10 %  
sans support  
Pla blanc

0.25 mm

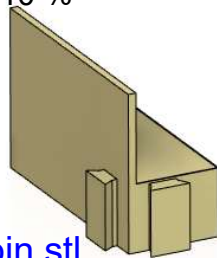


[pied.stl](#)

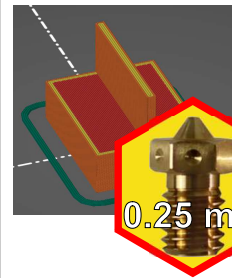


Couche 0.1 mm  
Remplissage 10 %  
sans support  
Pla beige

0.25 mm

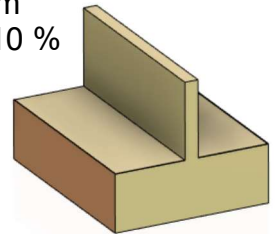


[banc coin.stl](#)

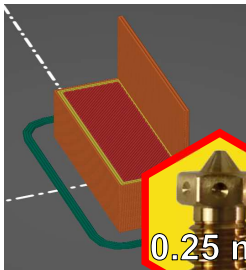


Couche 0.1 mm  
Remplissage 10 %  
sans support  
Pla beige

0.25 mm

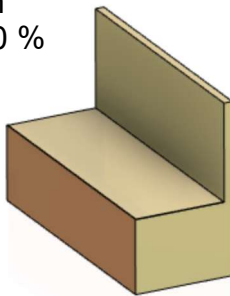


[banc double.stl](#)



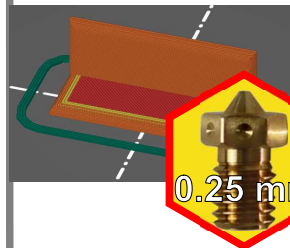
Couche 0.1 mm  
Remplissage 10 %  
sans support  
Pla beige

0.25 mm



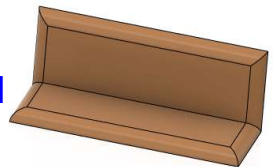
[banc.stl](#)

à imprimer 2 x



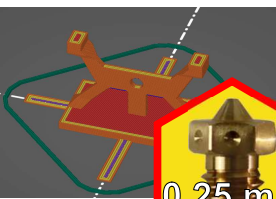
Couche 0.1 mm  
Remplissage 10 %  
sans support  
Pla marron

0.25 mm



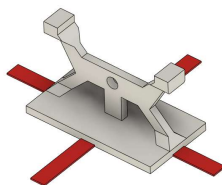
[coussin.stl](#)

à imprimer 6 x



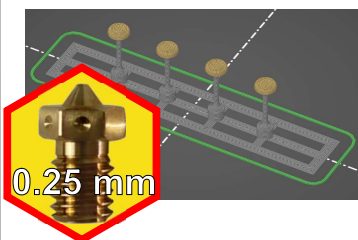
Couche 0.1 mm  
Remplissage 10 %  
sans support  
Pla blanc

0.25 mm



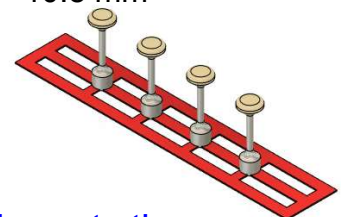
[table interieure.stl](#)

à imprimer 3 x



Couche 0.1 mm  
Remplissage 10 %  
sans support  
Pla argent < 10.8 mm  
beige >= 10.8 mm

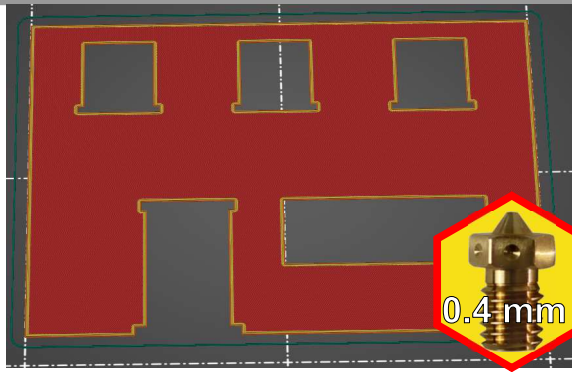
0.25 mm



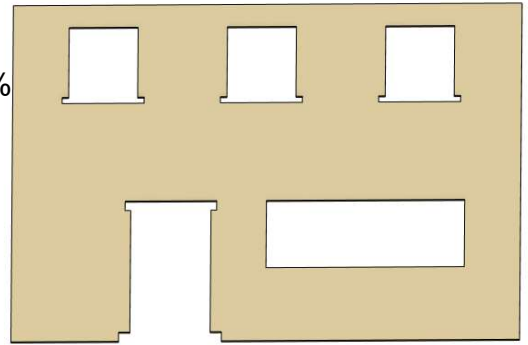
[tabouret.stl](#)



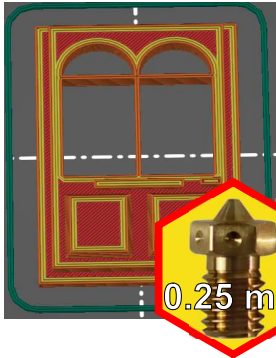
# Bistrot le Balto



Couche 0.1 mm  
Remplissage 10 %  
sans support  
Pla beige

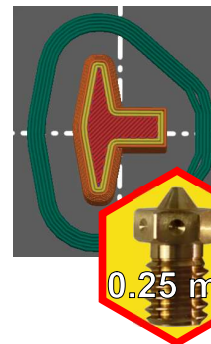
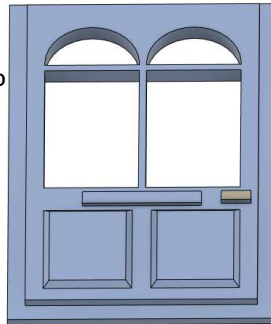


[crepi arriere.stl](#)



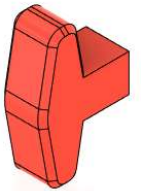
Couche 0.1 mm  
Remplissage 10 %  
sans support  
Pla bleu

[porte.stl](#)



Couche 0.1 mm  
Remplissage 10 %  
sans support  
Pla rouge

[carotte.stl](#)



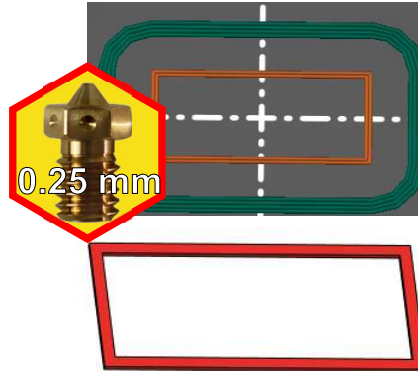
[enseigne.stl](#)

Couche 0.1 mm  
Remplissage 10 %  
sans support  
Pla noir < 0.5 mm  
0.5 <= blanc < 1.1 mm  
1.1 <= rouge



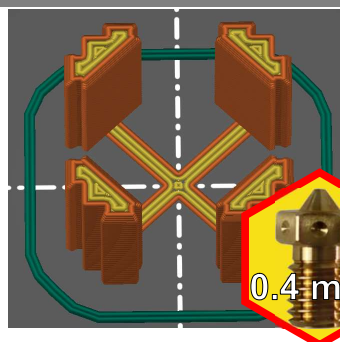
Couche 0.1 mm  
Remplissage 10 %  
sans support  
Pla rouge

[decor.stl](#)



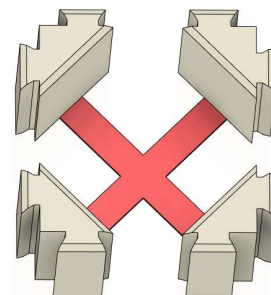
Couche 0.1 mm  
Remplissage 10 %  
sans support  
Pla rouge

[decor2.stl](#)  
à imprimer 3 x

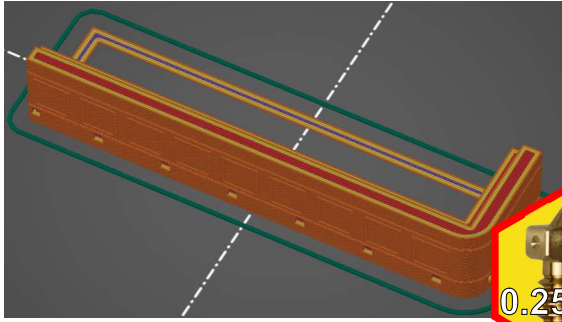


Couche 0.1 mm  
Remplissage 10 %  
sans support  
Pla blanc

[clef mur.stl](#)  
à imprimer 3 x

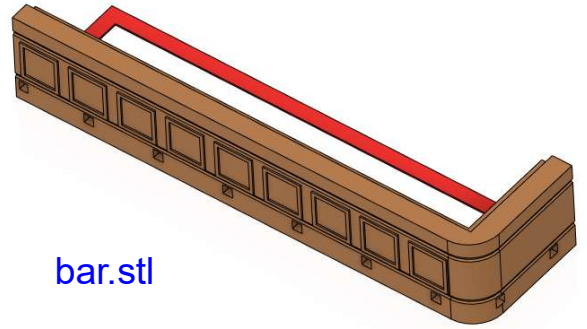


# Bistrot le Balto

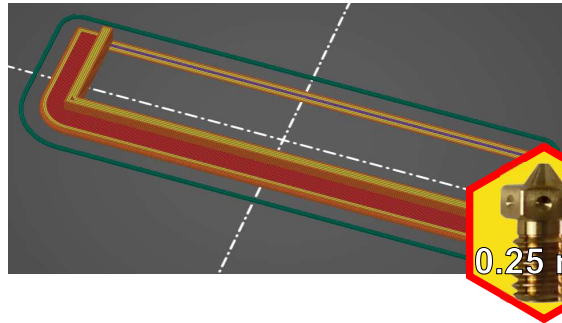


Couche 0.1 mm  
Remplissage 10 %  
sans support  
Pla blanc

0.25 mm

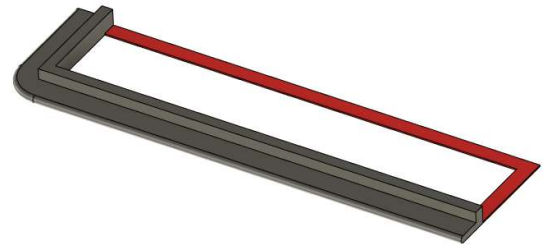


bar.stl

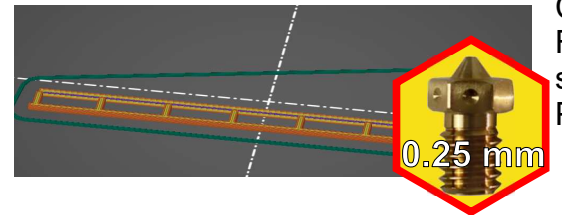


Couche 0.1 mm  
Remplissage 10 %  
sans support  
Pla argent

0.25 mm

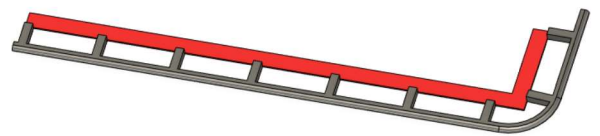


zinc.stl

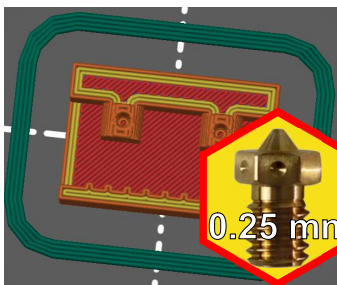


Couche 0.1 mm  
Remplissage 10 %  
sans support  
Pla argent

0.25 mm

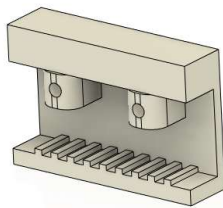


repose pied.stl

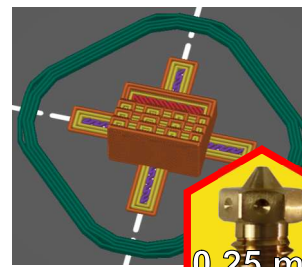


Couche 0.1 mm  
Remplissage 10 %  
sans support  
Pla blanc

0.25 mm

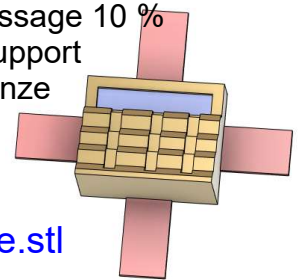


cafetiere.stl

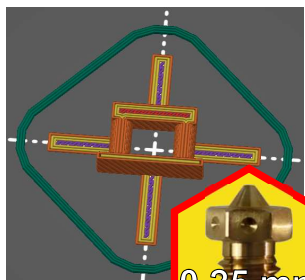


Couche 0.1 mm  
Remplissage 10 %  
sans support  
Pla bronze

0.25 mm

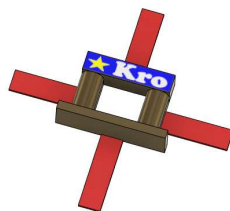


caisse.stl

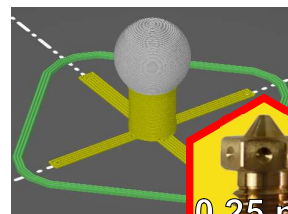


Couche 0.1 mm  
Remplissage 10 %  
sans support  
Pla bronze

0.25 mm



tireuse.stl



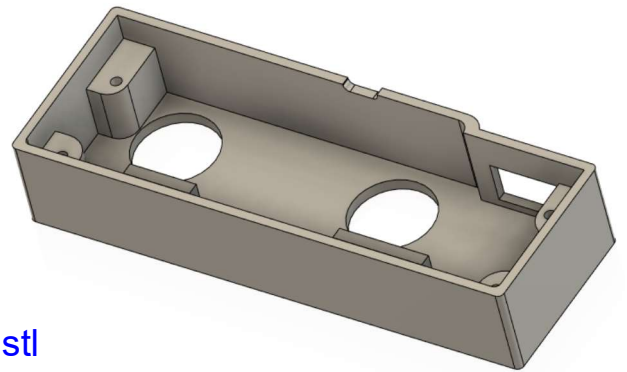
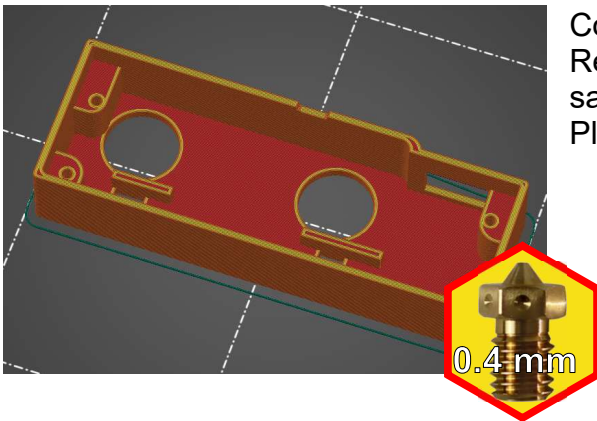
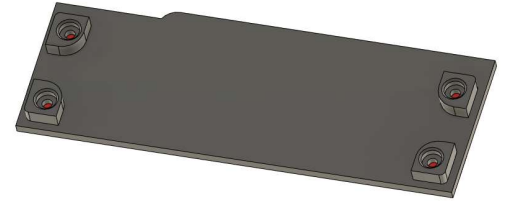
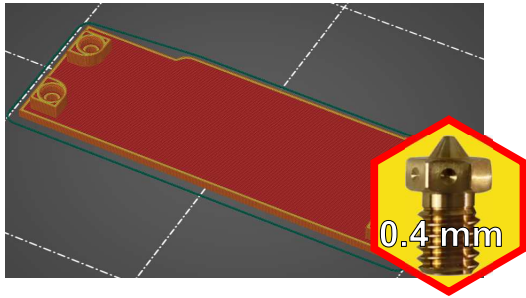
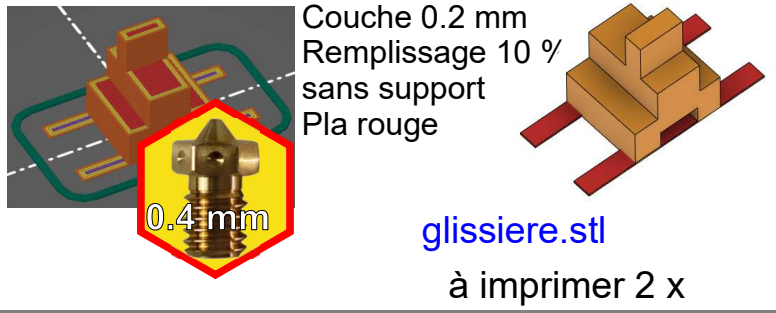
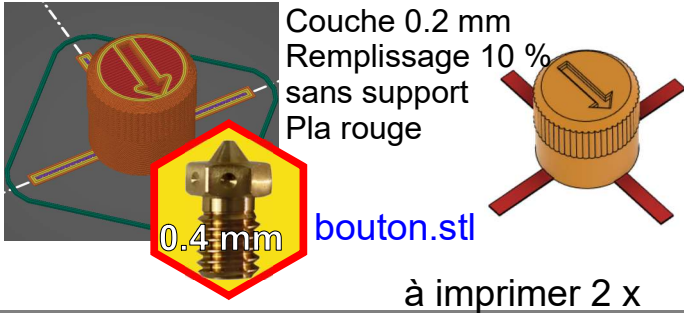
Couche 0.1 mm  
Remplissage 10 %  
sans support  
Pla bronze < 4.8 mm  
translucide >= 4.8

0.25 mm

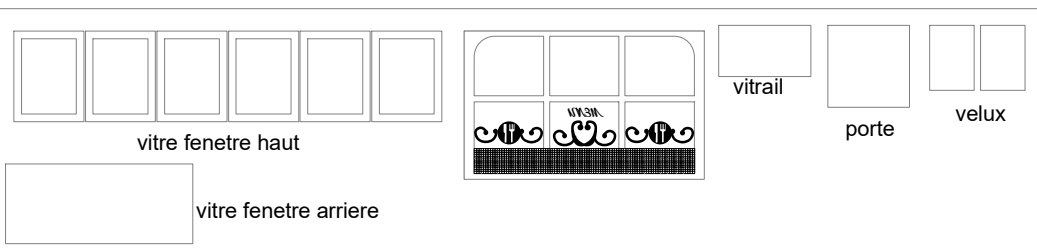


plafonnier.stl

# Bistrot le Balto



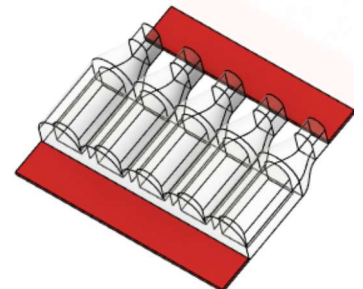
vitrage.png



A imprimer sur transparent

Couche 0.1 mm  
Remplissage 10 %  
sans support  
Pla translucide

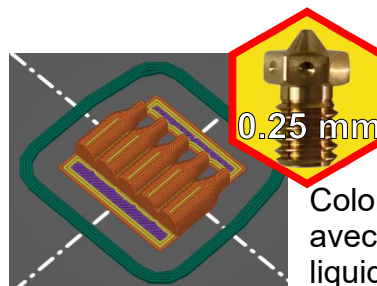
**bouteille.stl**



affiche\_decor.png



A imprimer sur papier

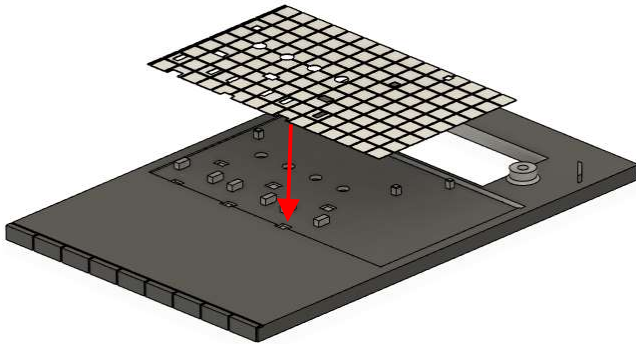


Colorer l'intérieur de la bouteille  
avec des feutres pour simuler le  
liquide

A imprimer 3 fois

# Bistrot le Balto

1

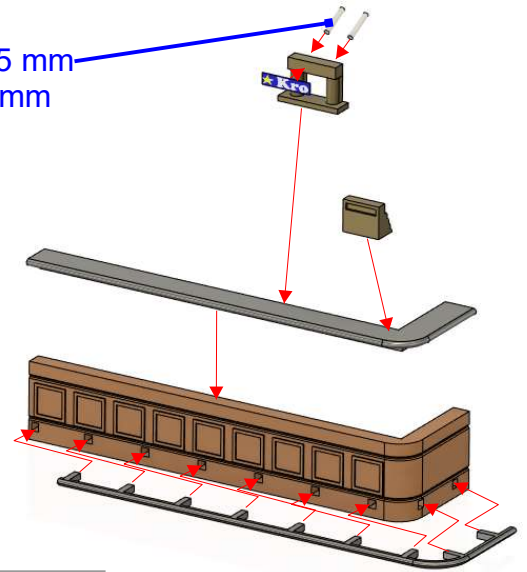


sol

sol.stl  
carrelage.stl

2

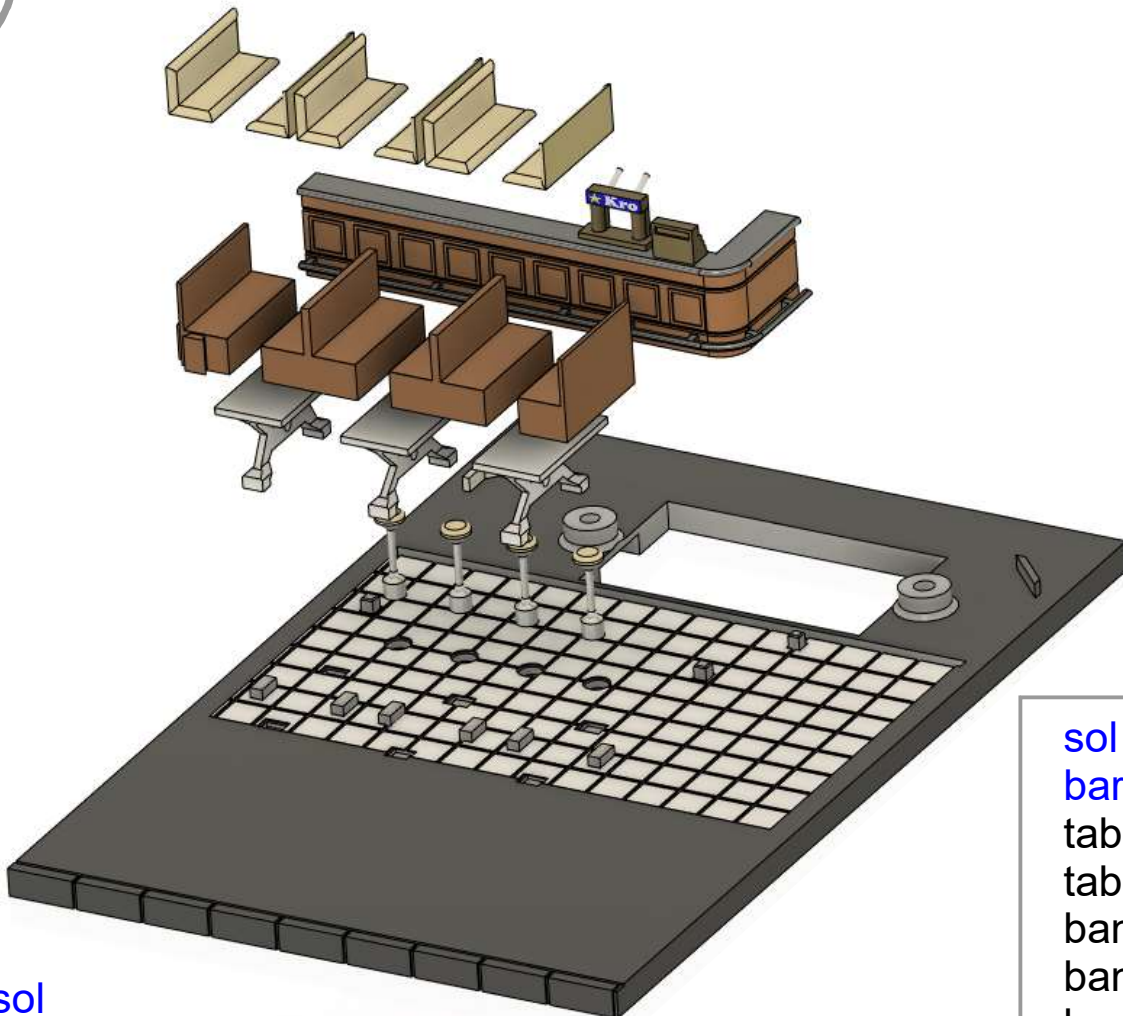
fil de fer Ø 0.5 mm  
longueur 10 mm



bar.stl  
zinc.stl  
caisse.stl  
tireuse.stl  
repose pied.stl  
affiche\_decor.png

bar

3

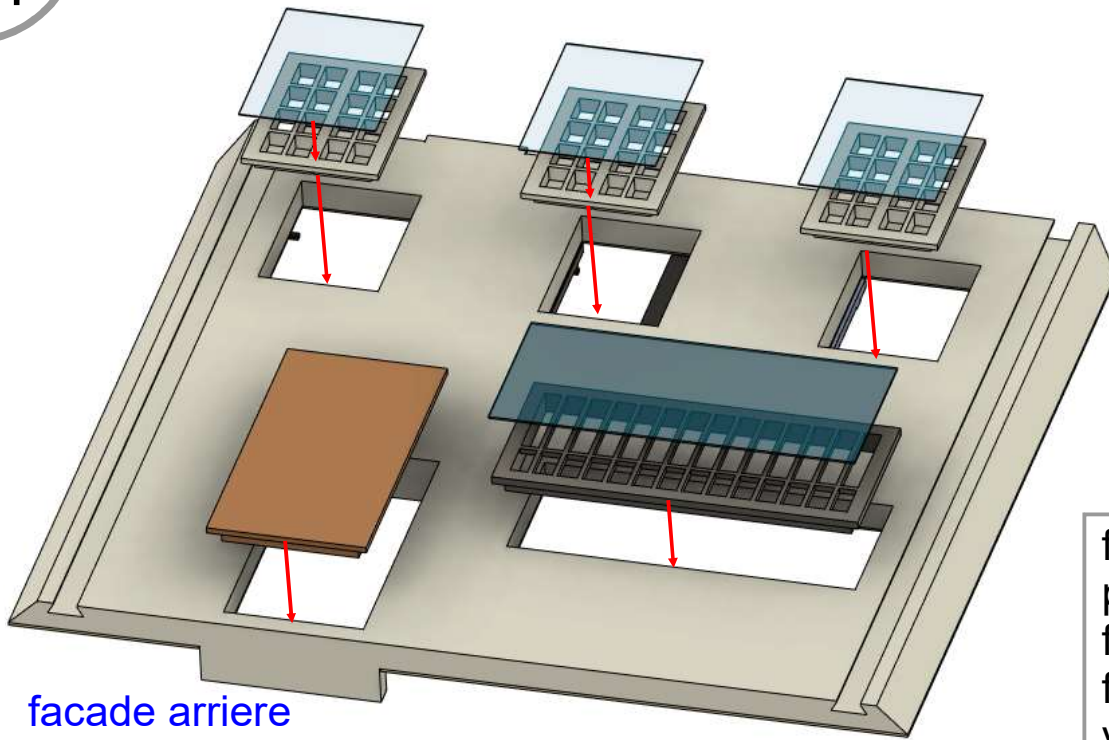


sol

sol  
bar  
tabouret.stl  
table interieure.stl  
banc double.stl  
banc coin.stl  
banc.stl  
coussin.stl

# Bistrot le Balto

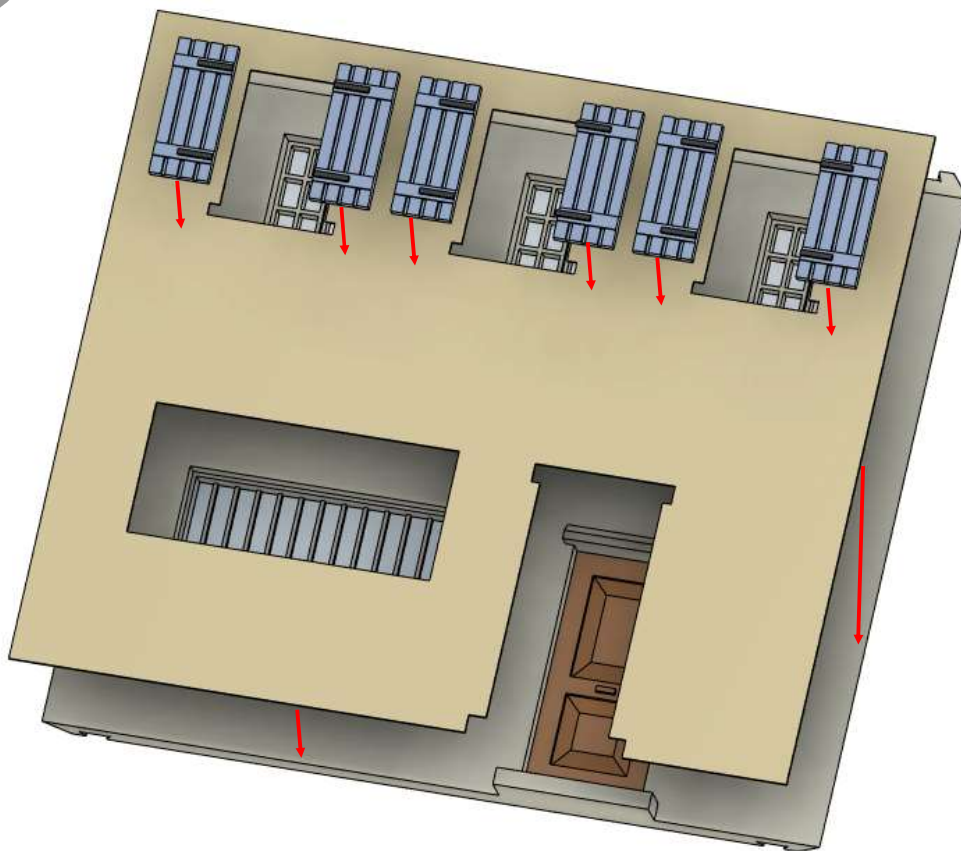
4



facade arriere

facade arriere.stl  
porte arriere.stl  
fenetre haut.stl  
fenetre arriere.stl  
vitrage.png

5

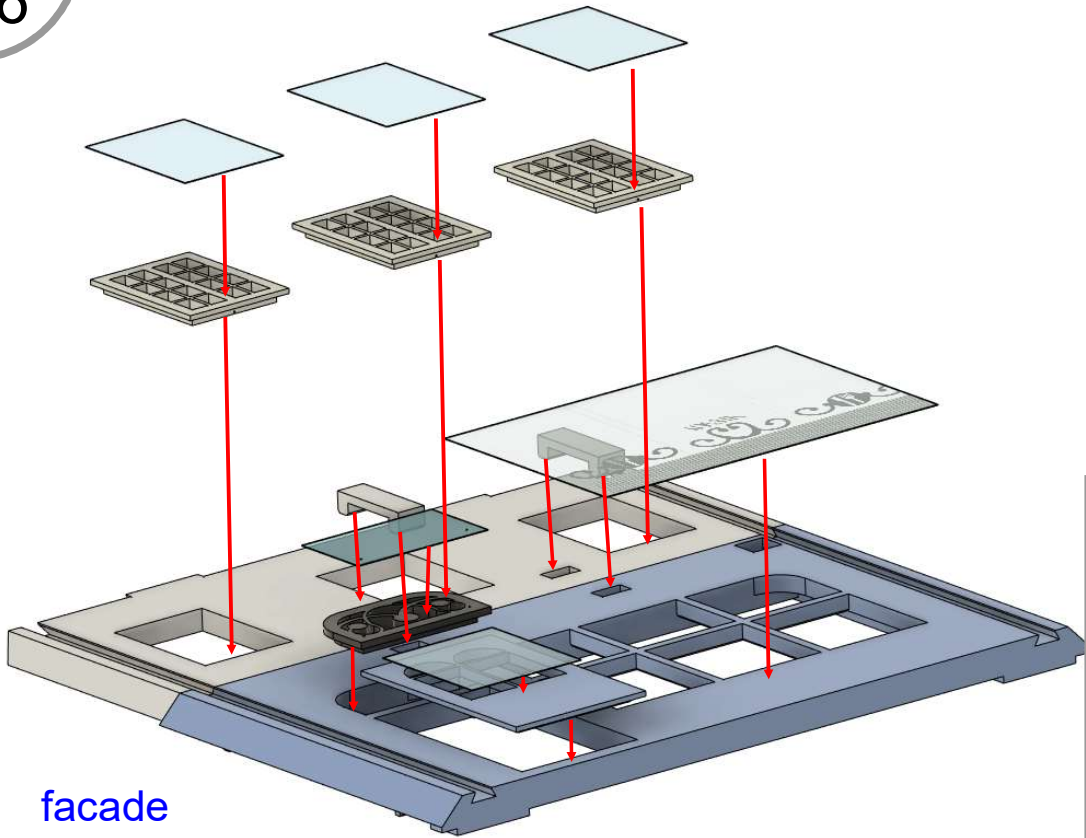


facade arriere

facade arriere  
volet.stl  
crepi arriere.stl

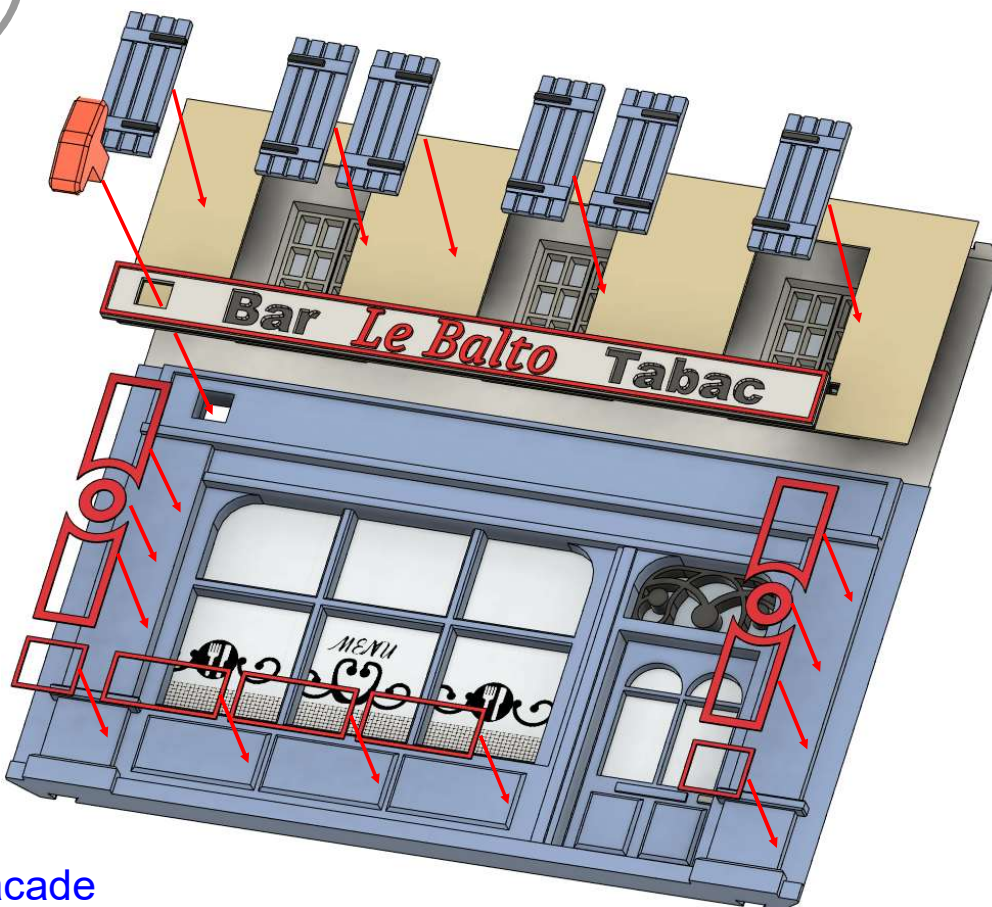
# Bistrot le Balto

6



vitrage.png  
facade bas.stl  
facade haut.stl  
fenetre haut.stl  
vasistas.stl  
porte.stl  
clef facade.stl

7

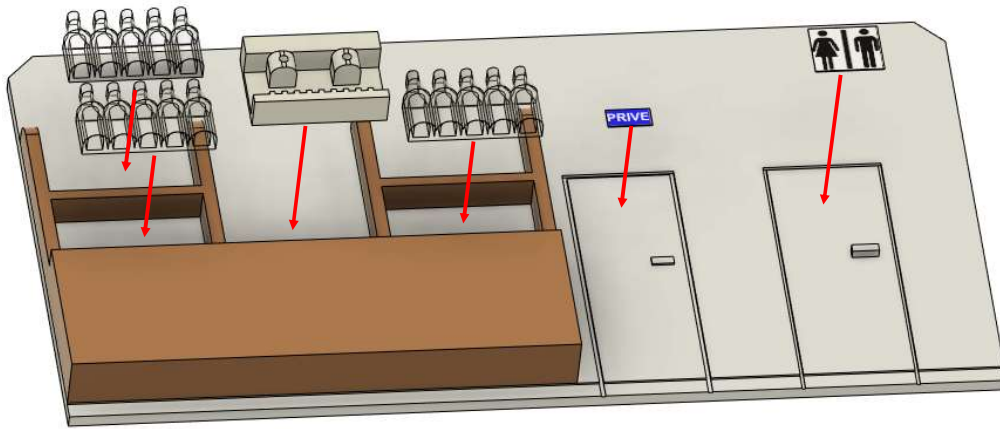


volet.png  
enseigne.stl  
carotte.stl  
decor.stl  
decor2.stl

# Bistrot le Balto

8

fil de fer Ø 0.5 mm  
longueur 10 mm



paroi

affiche\_decor.png  
paroi.stl  
cafetiere.stl  
fenetre\_haut.stl  
bouteille.stl

9



sol

sol  
paroi

# Bistrot le Balto

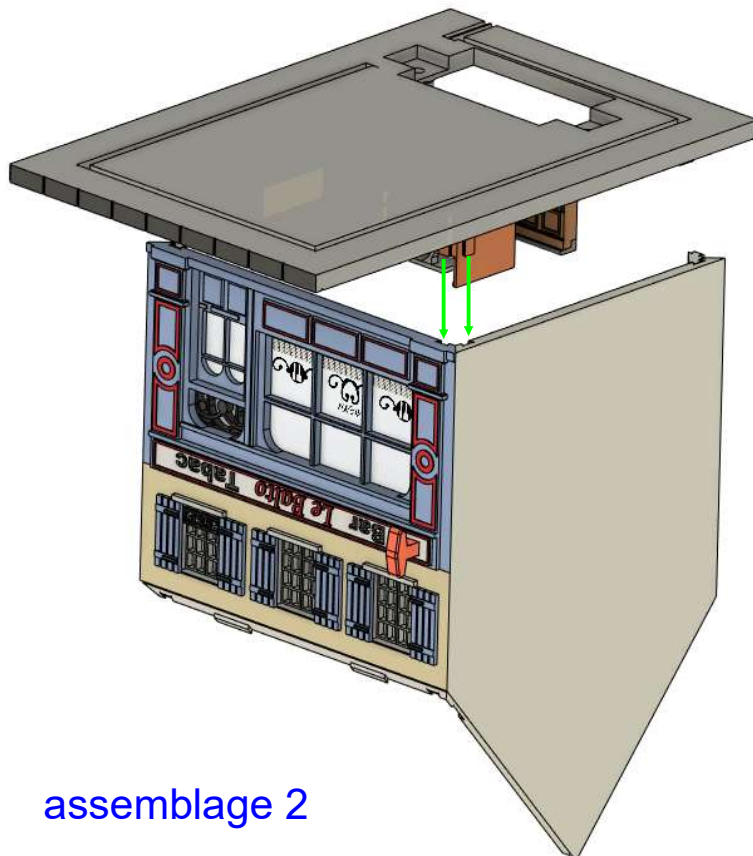
10



assemblage 1

facade  
pignon.stl  
clef facade.stl

11



assemblage 2

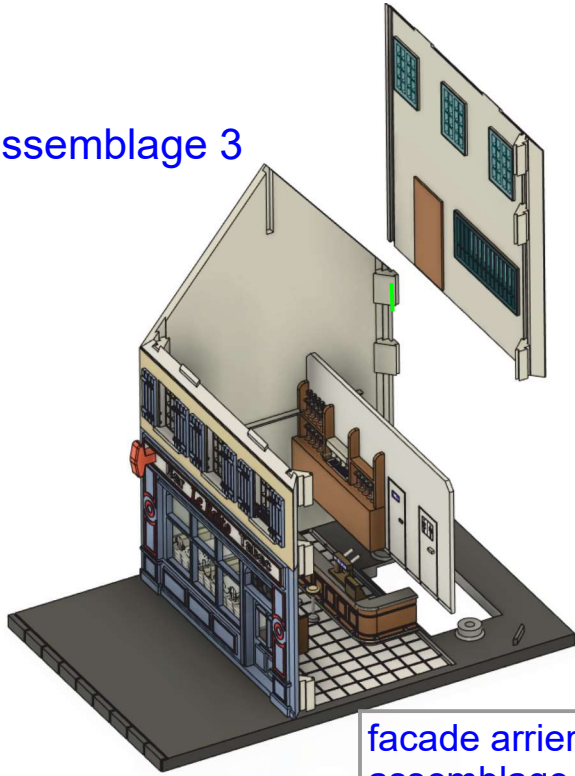
sol  
assemblage 1



# Bistrot le Balto

12

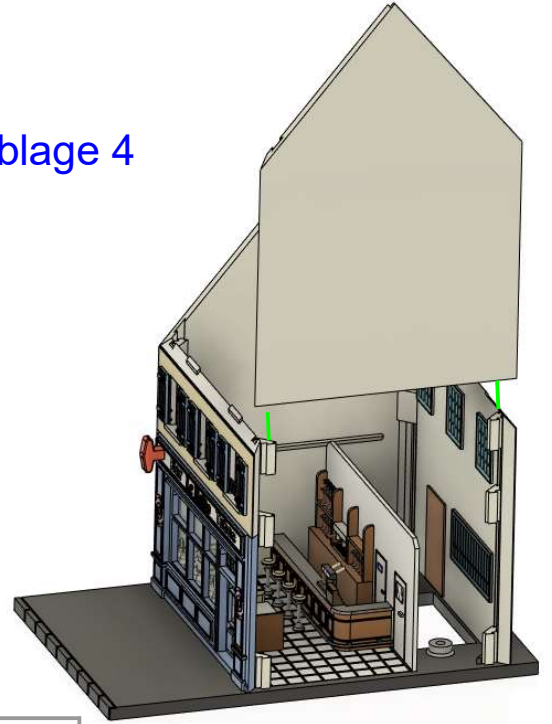
assemblage 3



facade arriere  
assemblage 2  
paroi

13

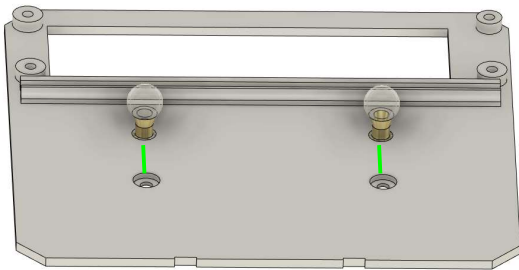
assemblage 4



assemblage 3  
pignon.stl

14

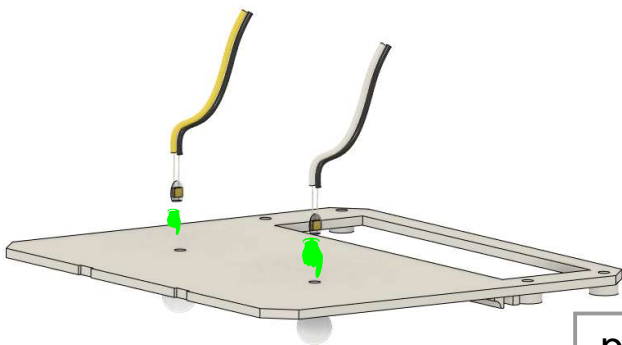
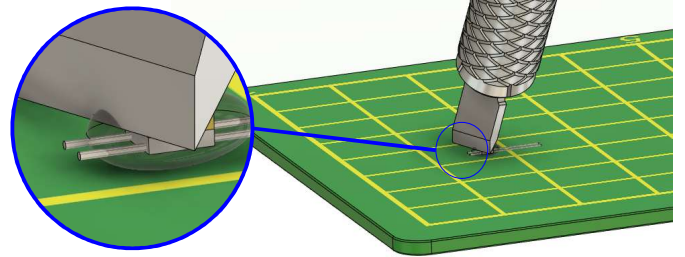
Les leds sont récupérées sur une guirlande à pile



Plancher etage

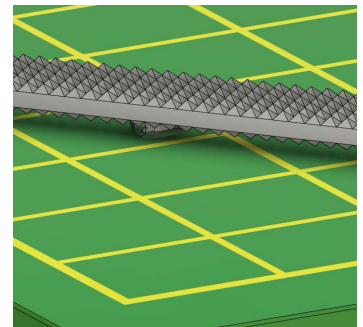
plancher etage.stl  
plafonnier.stl

Repérer bien la cathode des diodes.  
Couper l'extrémité de la diode, attention à ne pas toucher la partie émissive.



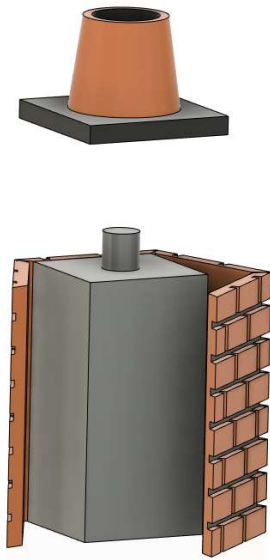
Limer un peu pour affiner  
la diode afin qu'elle  
rentrent dans le  
plafonnier .  
à tester avant mise en  
place du plancher

plancher etage.stl  
plafonnier.stl  
2 x Led



# Bistrot le Balto

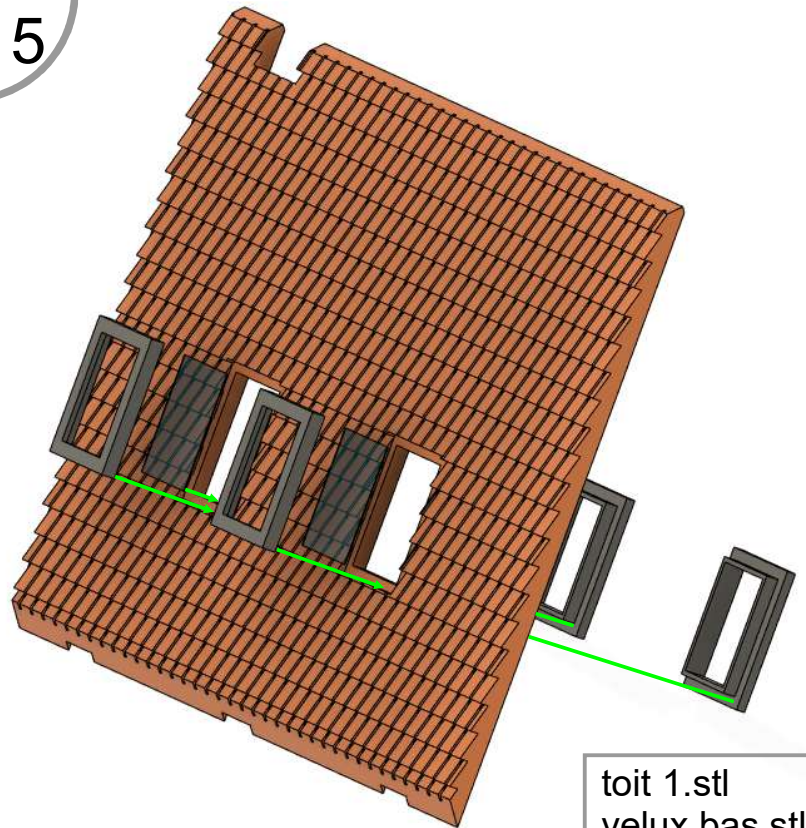
14



chapeau.stl  
centre cheminee.stl  
cheminee.stl  
vitrage.png

cheminee

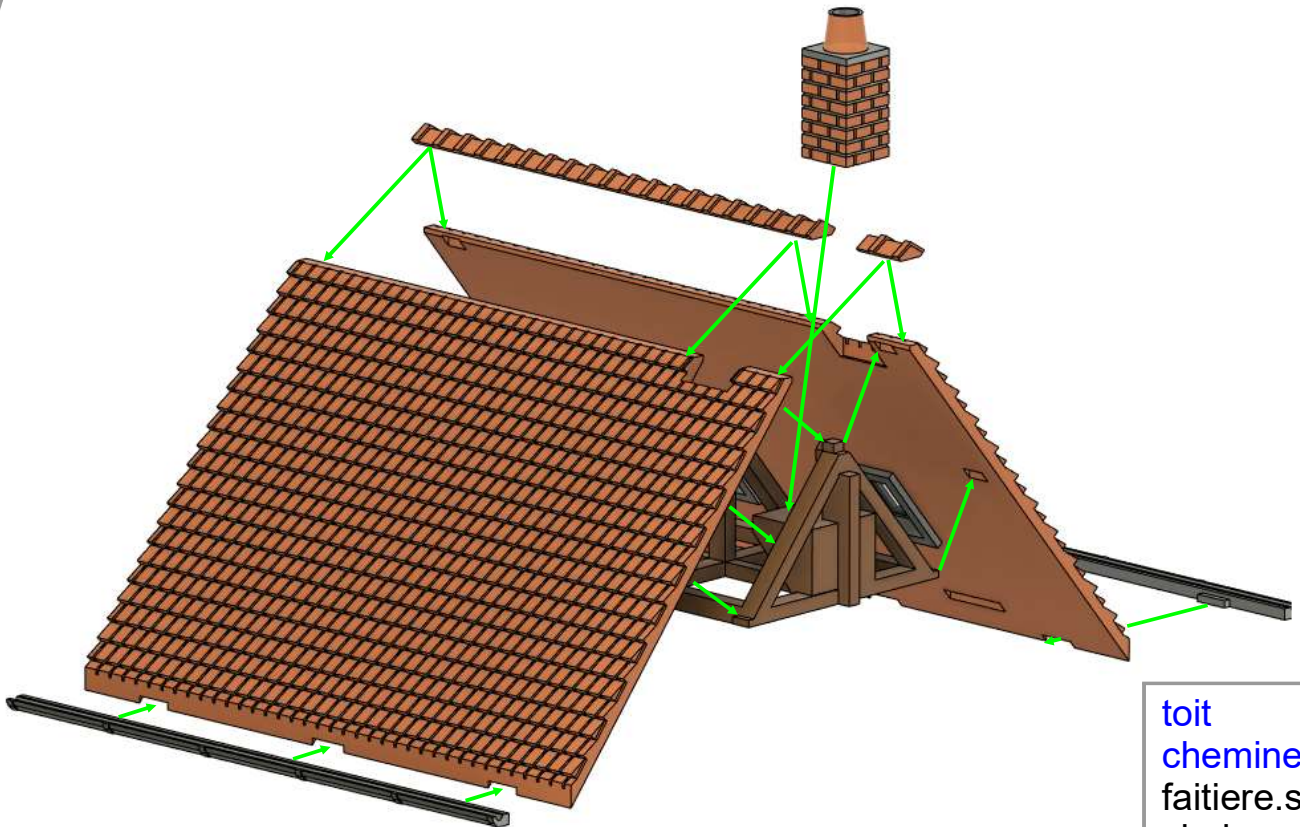
15



toit 1.stl  
velux bas.stl  
velux haut.stl  
vitrage.png

toit

16

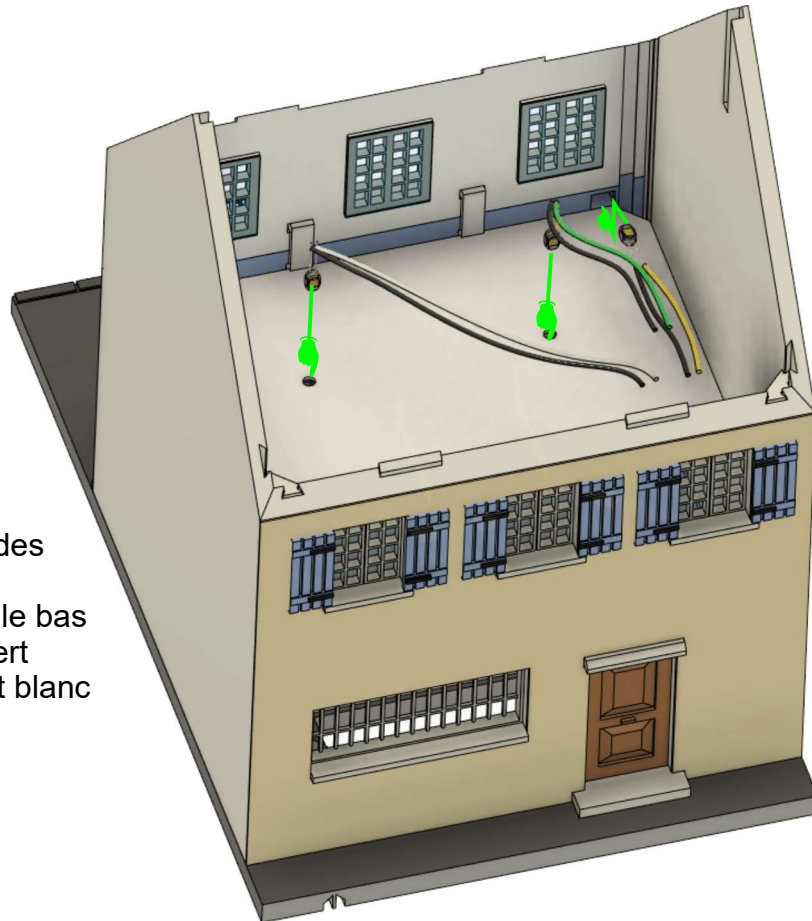


toit  
cheminee  
faitiere.stl  
chaineau.stl  
charpente.stl

# Bistrot le Balto

17

assemblage 5



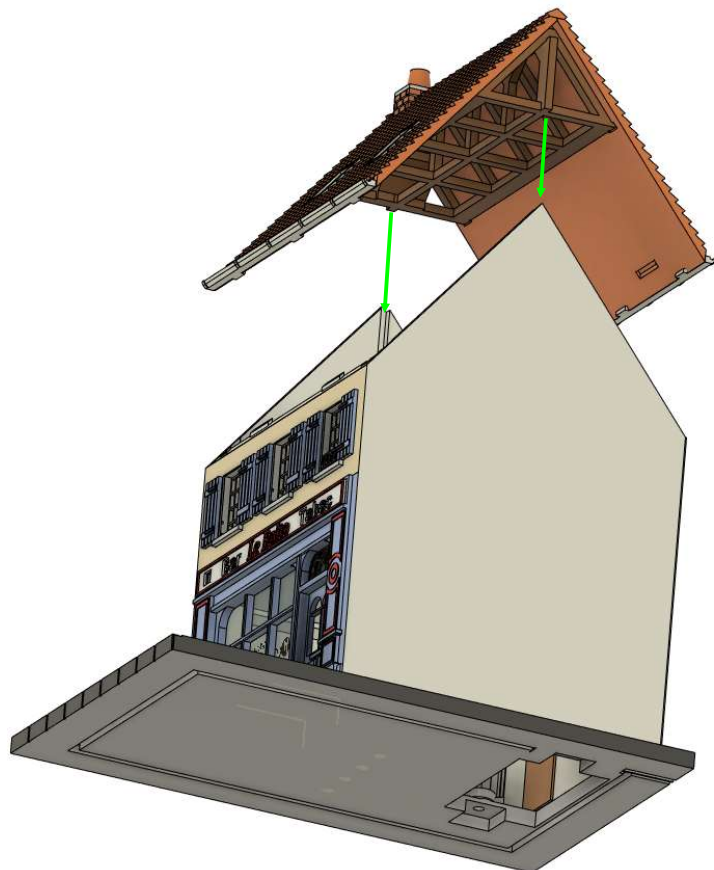
Relier les cathodes des diodes

Sortir les fils électriques par le bas  
Fil noir pour les cathodes, vert  
pour la diode de la carotte et blanc  
pour le plafonnier .

assemblage 4  
planche etage

18

Ne pas coller le toit, ce qui permettra  
l'accès aux diodes si besoin

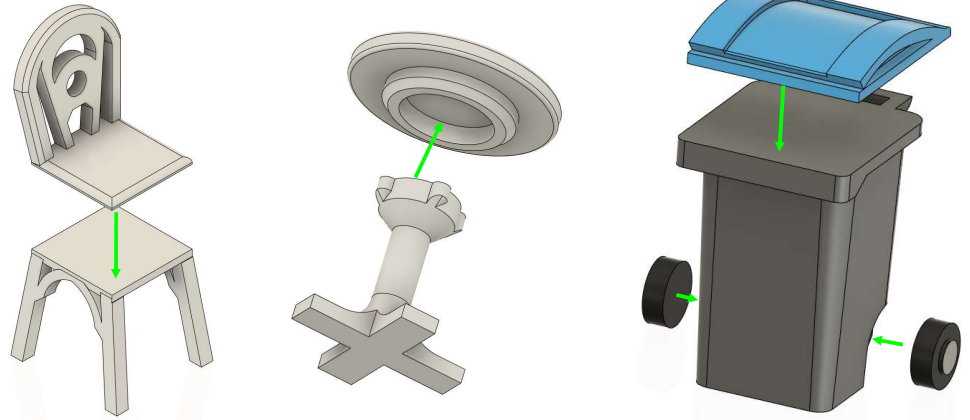


assemblage 5  
toit

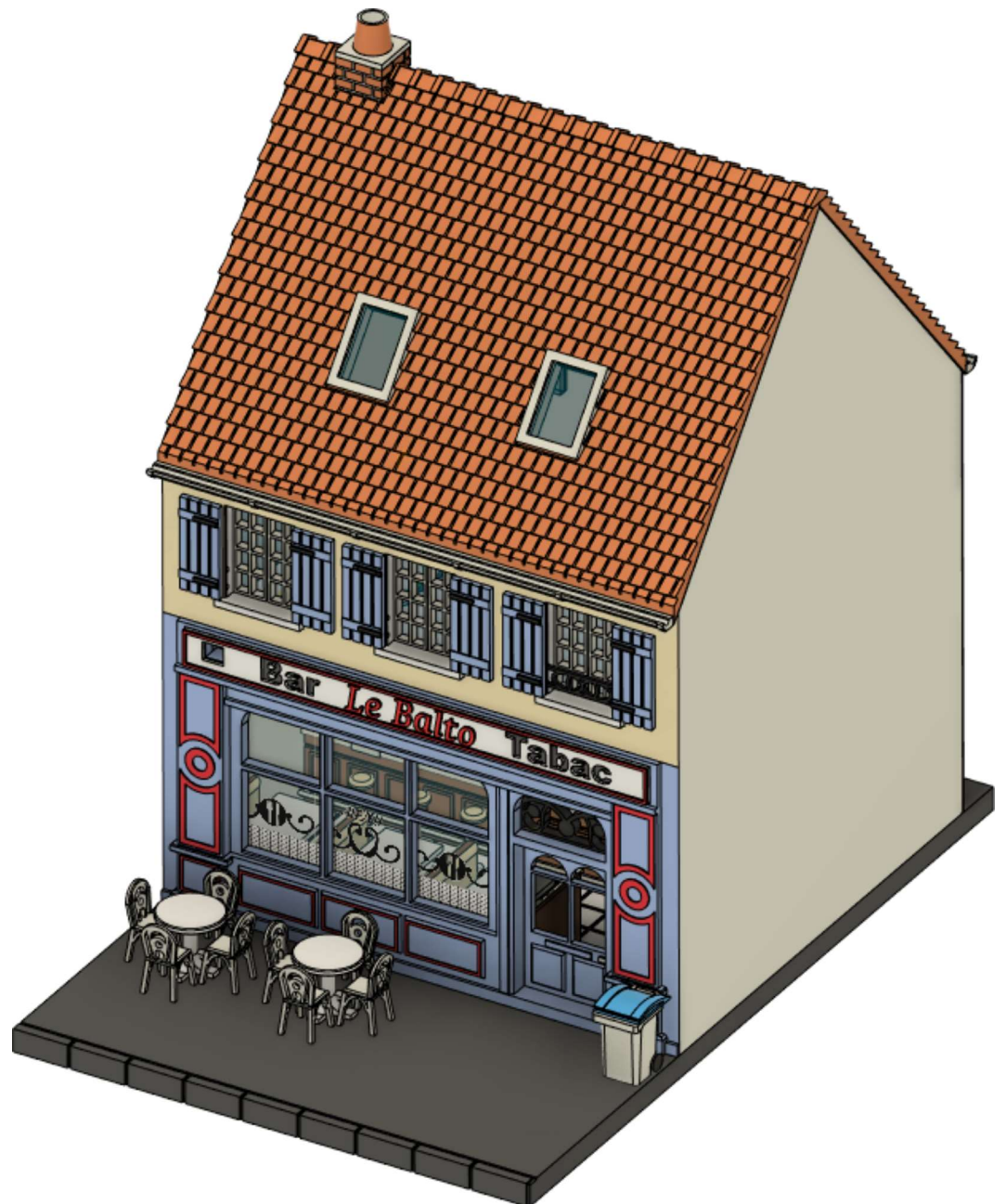
# Bistrot le Balto

19

assise chaise.stl  
dossier.stl  
table.stl  
pied.stl  
roue.stl  
couverture poubelle.stl  
cuve poubelle.stl



20

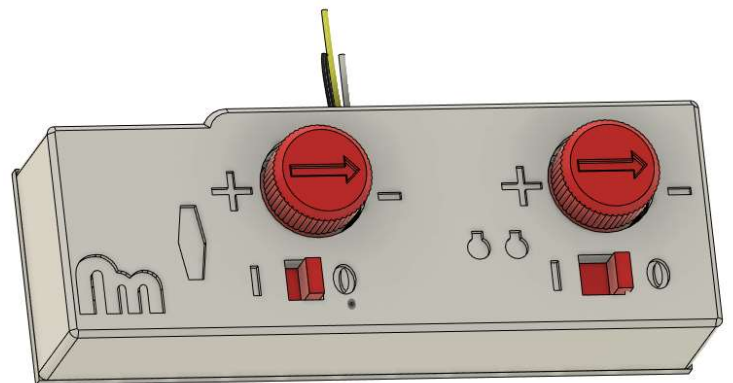
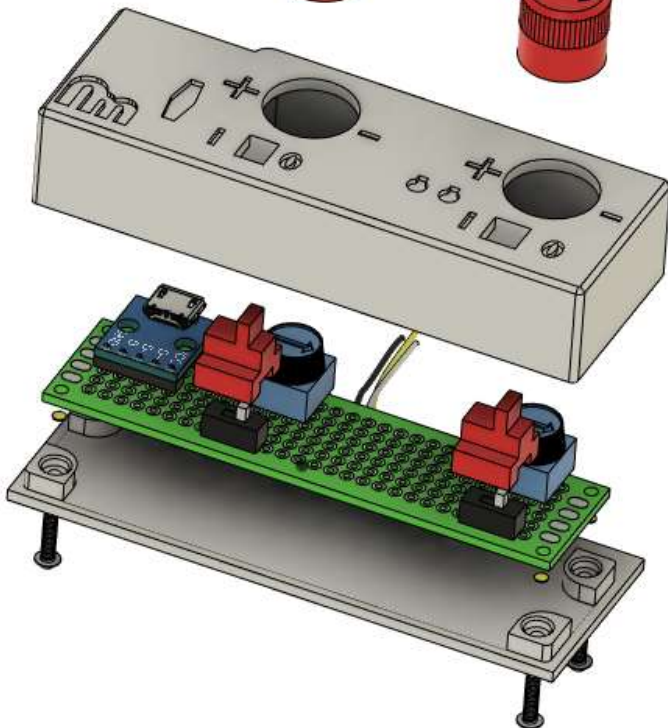
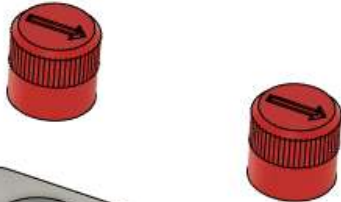
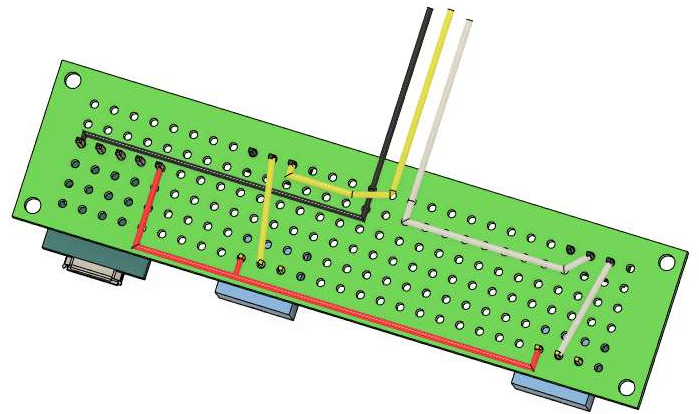
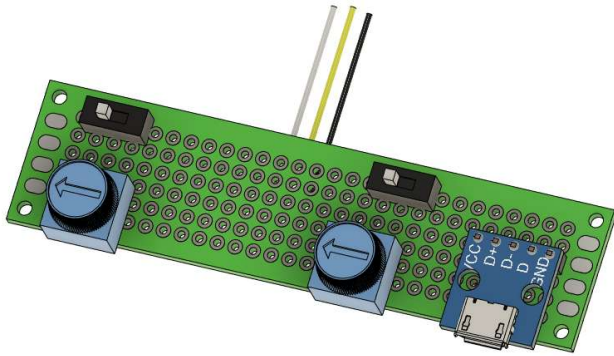
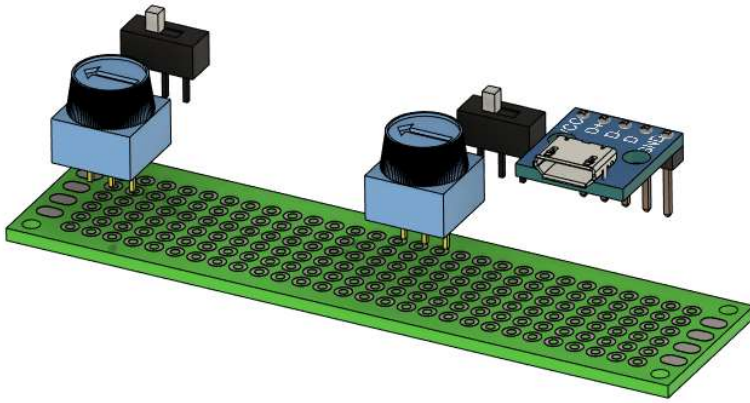


# Bistrot le Balto

21

2 potentiomètres 10 K $\Omega$   
2 micro interrupteur  
1 prise micro usb  
4 vis M2 x 8 mm  
carte perforée

Retrouver les liens sur <http://amigagoma.free.fr>



boitier.stl  
bouton.stl  
fond.stl  
glissiere.stl