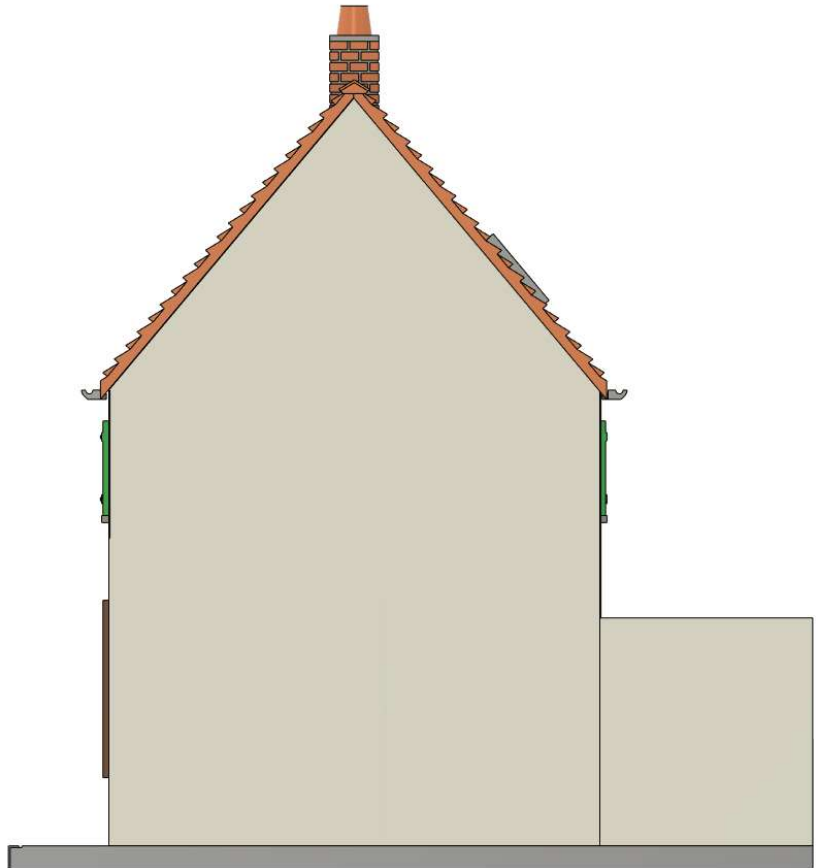


Boulangerie DUPIN



Boulangerie DUPIN



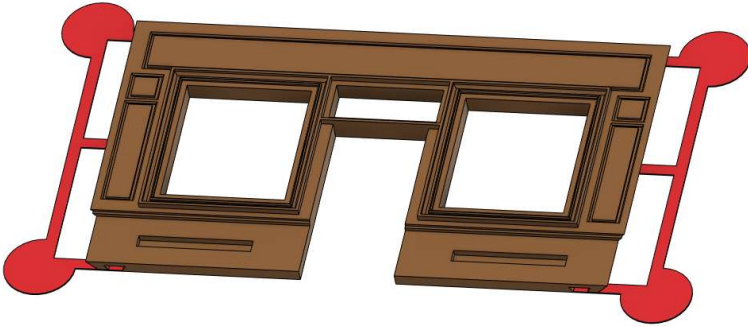
En rouge des aides à
l'impression à supprimer
Utiliser un cutter bien aiguisé



A imprimer avec
une buse de 0.25 mm maximum

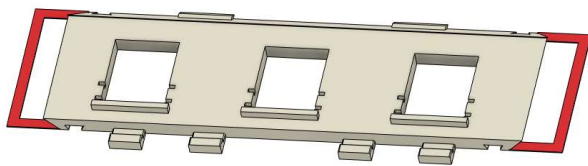
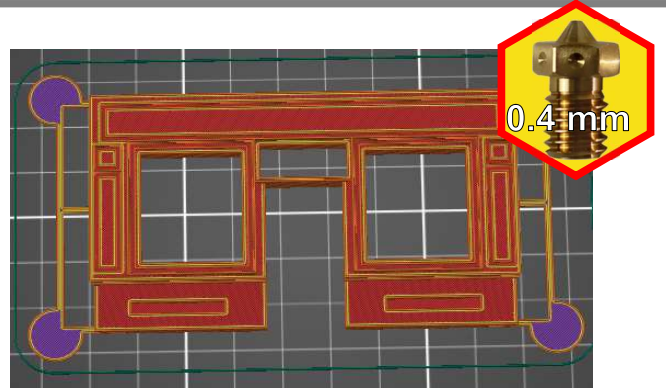


A imprimer avec
une buse de 0.4 mm maximum



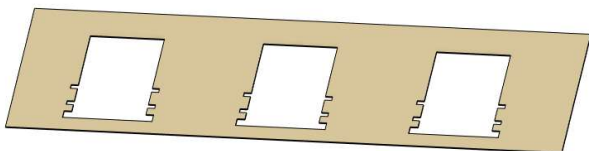
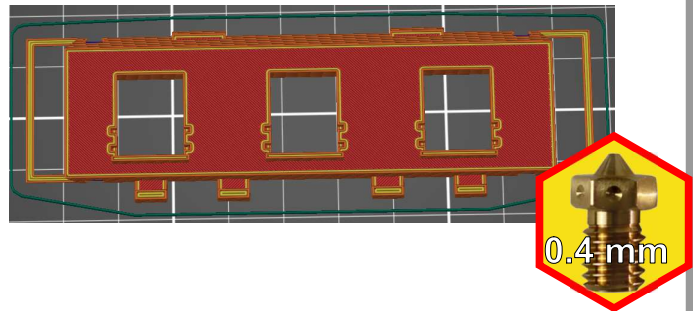
Couche 0.1 mm
Remplissage 10 %
sans support
Pla marron

[bas facade.stl](#)



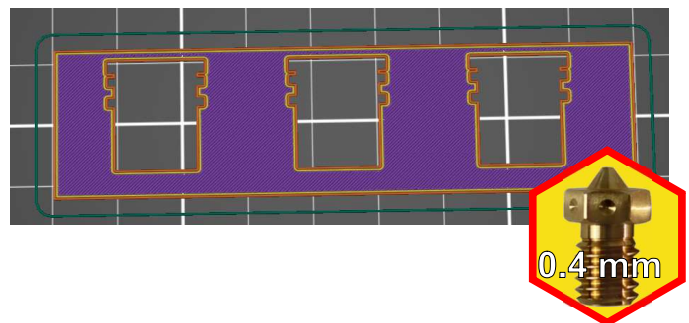
Couche 0.1 mm
Remplissage 10 %
sans support
Pla blanc

[haut facade.stl](#)



Couche 0.1 mm
Remplissage 10 %
sans support
Pla beige

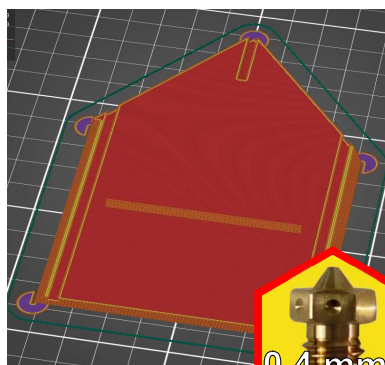
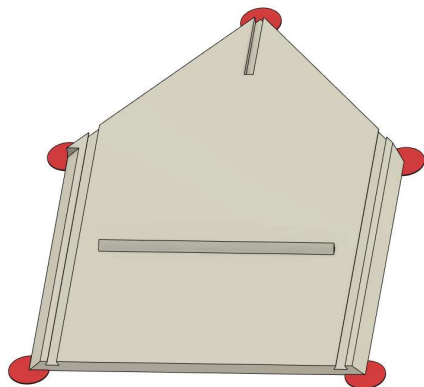
[crepi facade.stl](#)



A imprimer de préférence sur un plateau texturé

Boulangerie DUPIN

pignon.stl

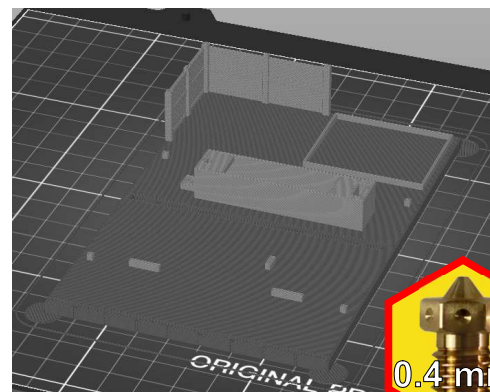
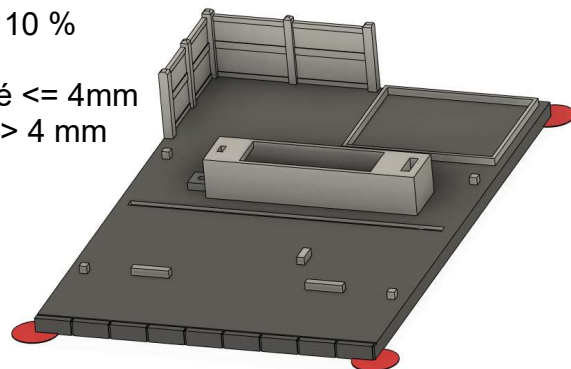


Couche 0.1 mm
Remplissage 10 %
sans support
Pla blanc

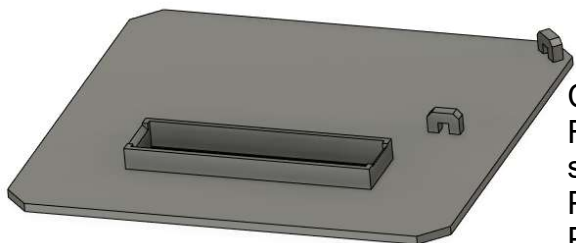
A imprimer 2 fois

sol.stl

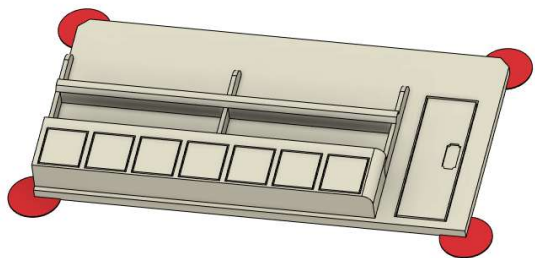
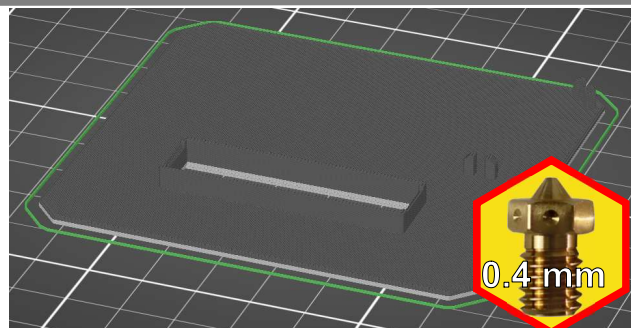
Couche 0.2 mm
Remplissage 10 %
sans support
Pla gris foncé ≤ 4 mm
gris clair > 4 mm



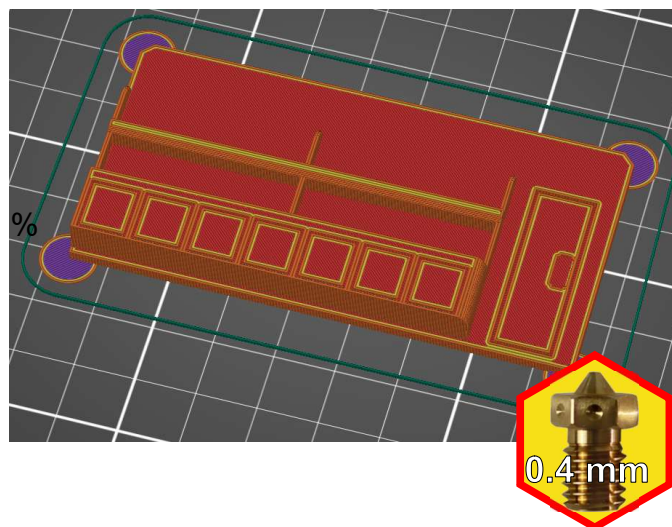
plancher etage.stl



Couche 0.2 mm
Remplissage 10 %
sans support
Pla blanc ≤ 1 mm
Pla noir > 1 mm



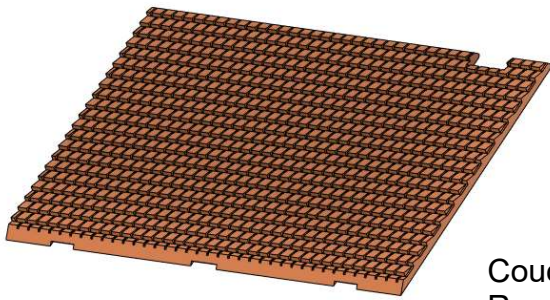
Couche 0.1 mm
Remplissage 10 %
sans support
Pla blanc



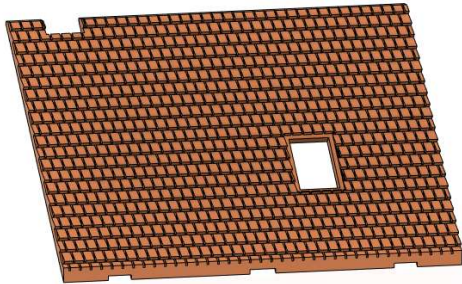
A imprimer de préférence sur un plateau texturé

Boulangerie DUPIN

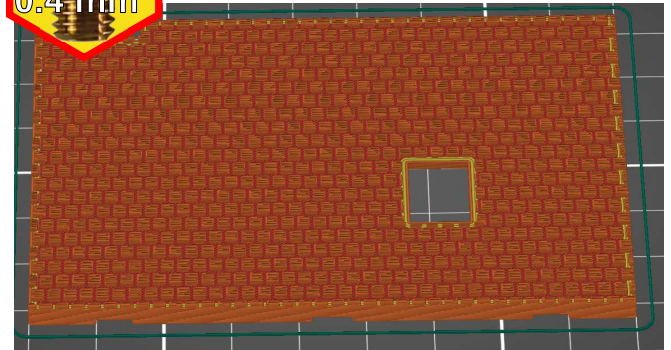
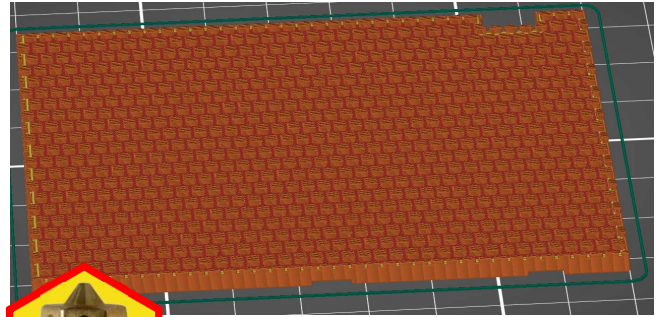
toit 1.stl



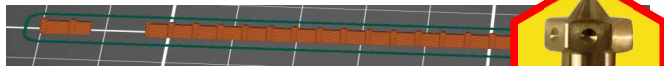
toit 2.stl



Couche 0.1 mm
Remplissage 10 %
sans support
Pla rouge brique



faitiere.stl



Couche 0.1 mm
Remplissage 10 %
sans support
Pla rouge brique

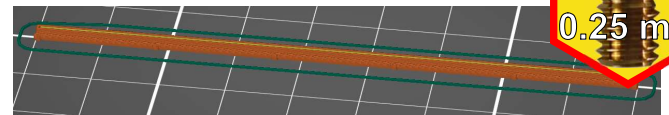
0.25 mm

chaineau.stl

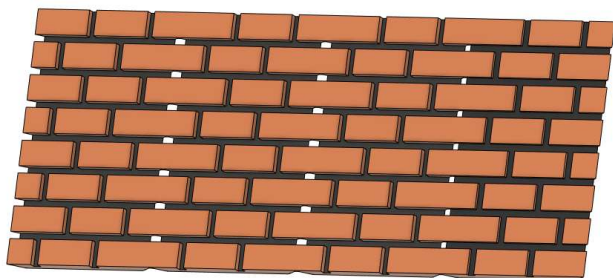


Couche 0.1 mm
Remplissage 10 %
sans support
Pla argent

à imprimer 2 fois

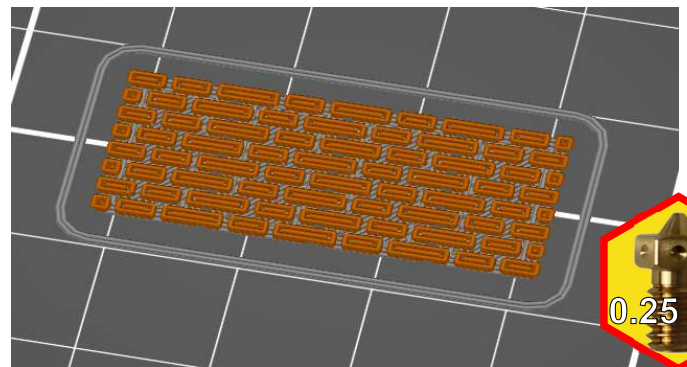


0.25 mm



Couche 0.1 mm
Remplissage 10 %
sans support
Pla gris foncé ≤ 0.4 mm
rouge brique > 0.4 mm

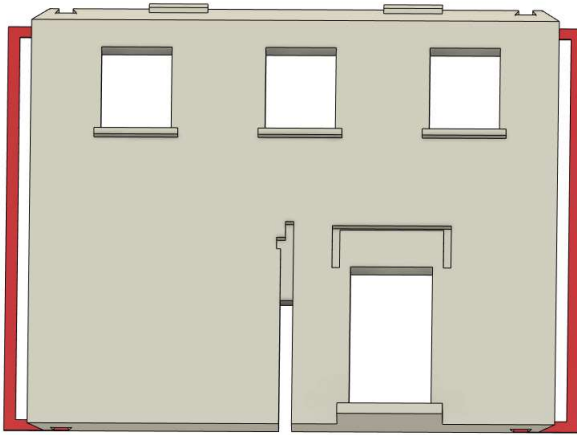
cheminee.stl



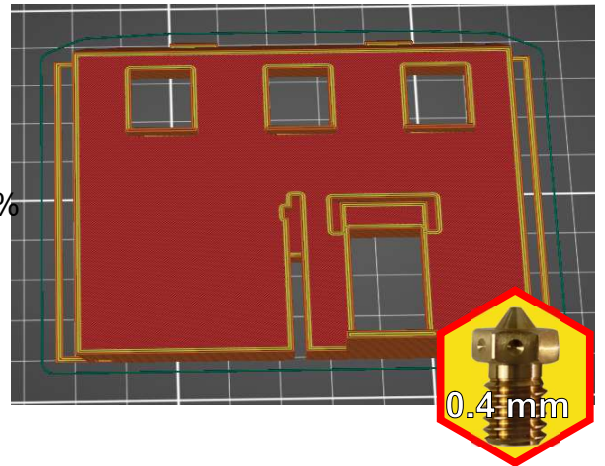
0.25 mm

Boulangerie DUPIN

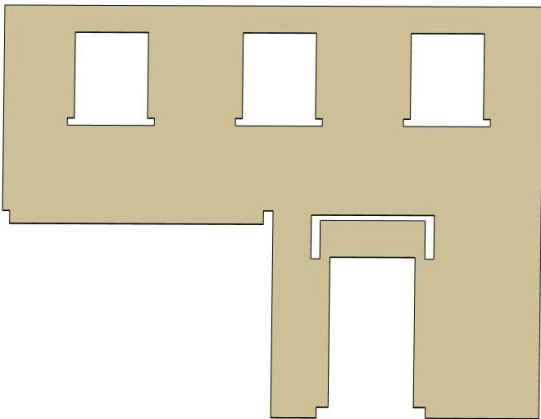
arriere.stl



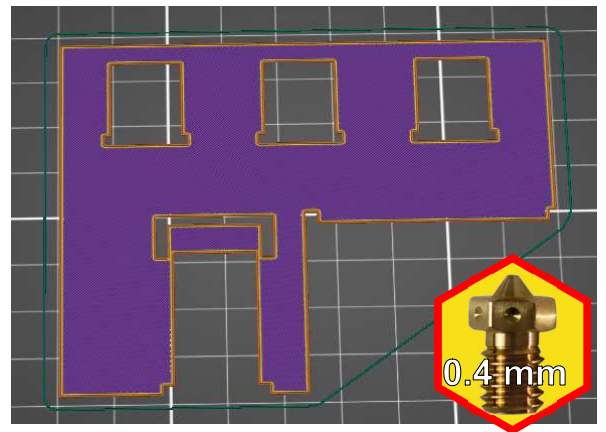
Couche 0.2 mm
Remplissage 10 %
sans support
Pla blanc



crepi arriere.stl

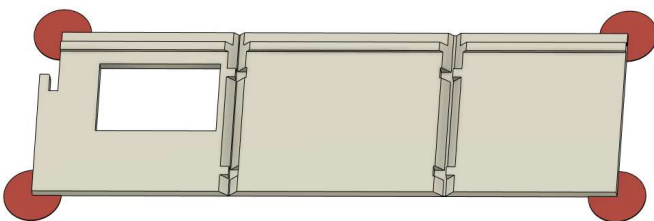


Couche 0.2 mm
Remplissage 10 %
sans support
Pla beige

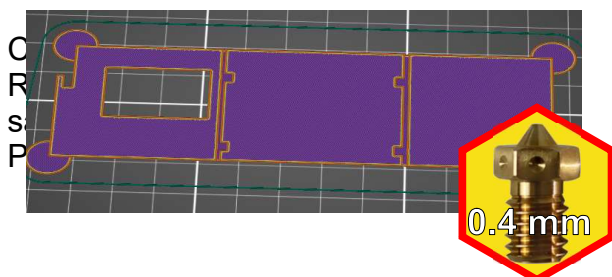


A imprimer de préférence sur un plateau texturé

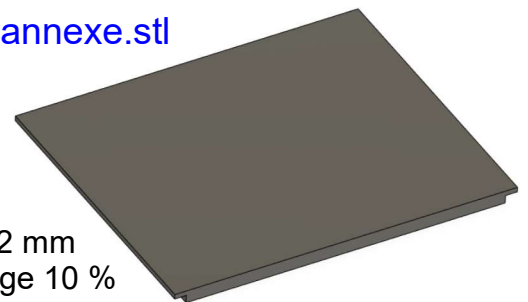
annexestl



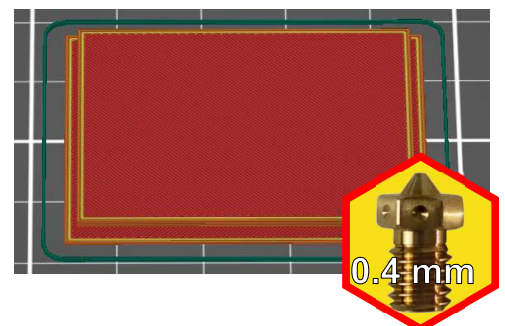
Couche 0.2 mm
Remplissage 10 %
sans support
Pla blanc



toit annexe.stl



Couche 0.2 mm
Remplissage 10 %
sans support
Pla gris foncé

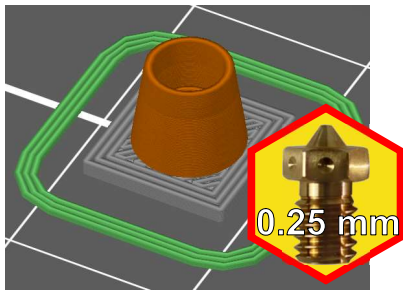


Boulangerie DUPIN

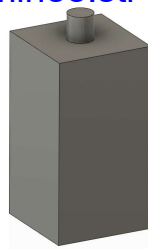
chapeau.stl



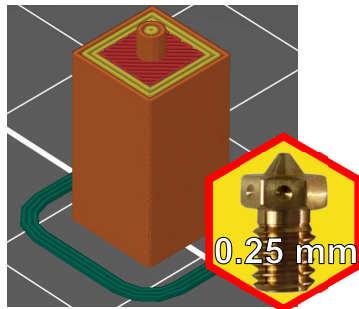
Couche 0.1 mm
Remplissage 10 %
sans support
Pla gris foncé <= 1mm
Rouge brique > 1 mm



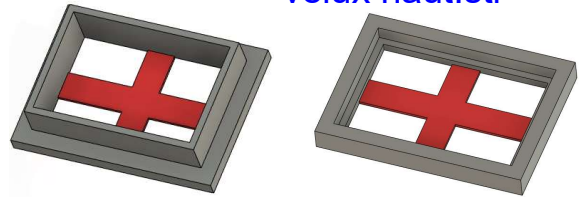
centre cheminee.stl



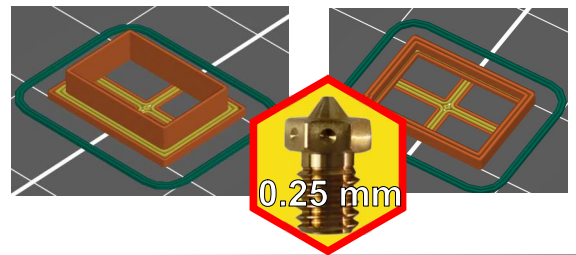
Couche 0.1 mm
Remplissage 10 %
sans support
Pla gris foncé



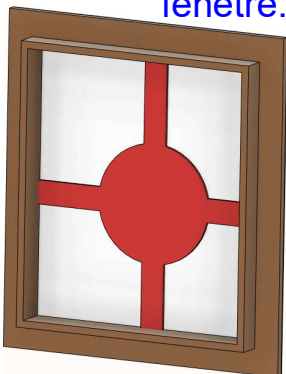
velux haut.stl



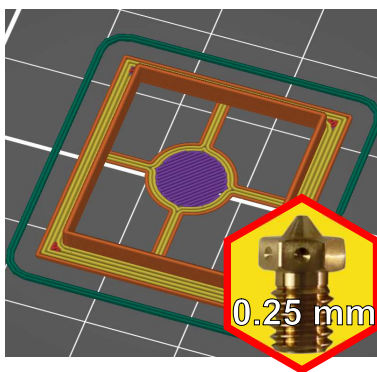
Couche 0.1 mm
Remplissage 10 %
sans support
Pla noir



fenetre.stl

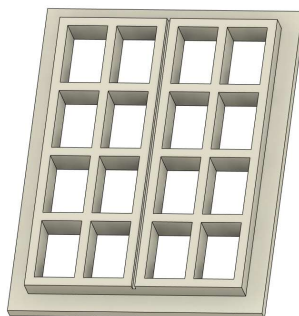


Couche 0.1 mm
Remplissage 10 %
sans support
Pla marron

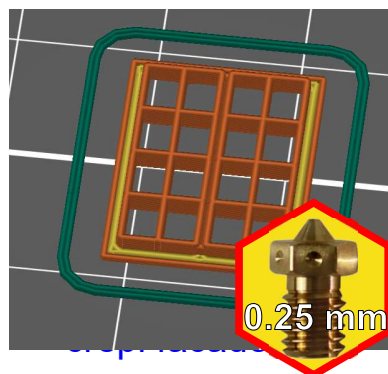


A imprimer 2 fois

fenetre haut.stl

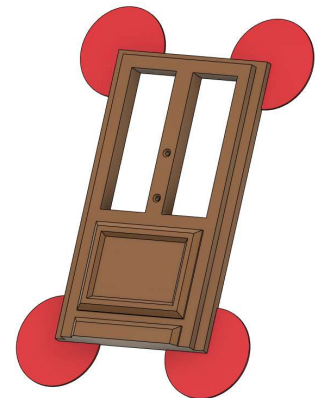


Couche 0.1 mm
Remplissage 10 %
sans support
Pla blanc

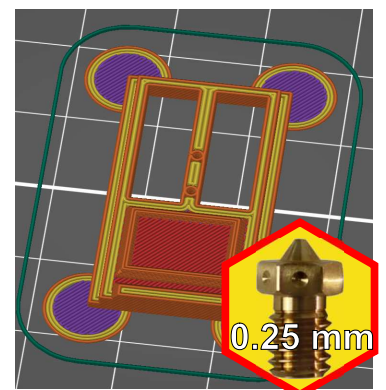


A imprimer 6 fois

porte.stl



Couche 0.1 mm
Remplissage 10 %
sans support
Pla marron

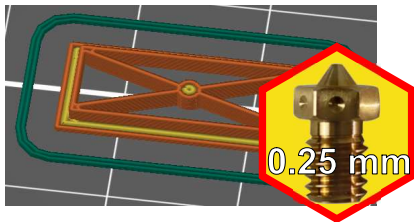


Boulangerie DUPIN

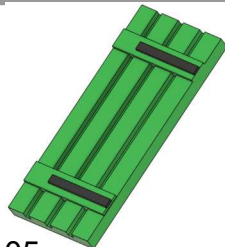
vasistas.stl



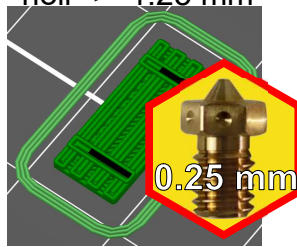
Couche 0.1 mm
Remplissage 10 %
sans support
Pla noir



volet.stl

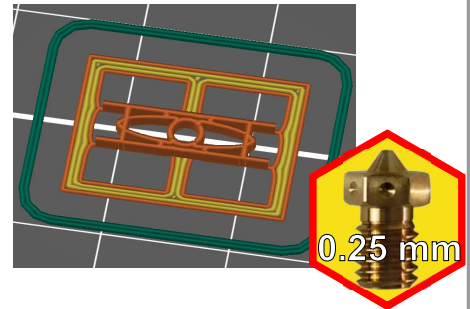
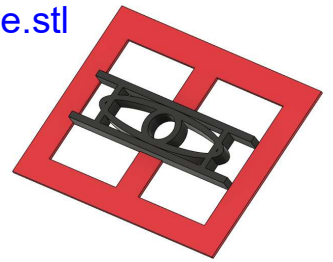


Couche 0.05 mm
Remplissage 10 %
sans support
Pla vert <= 1.25 mm
noir > 1.25 mm

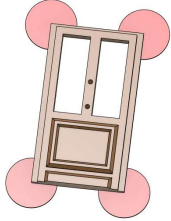


A imprimer 12 fois

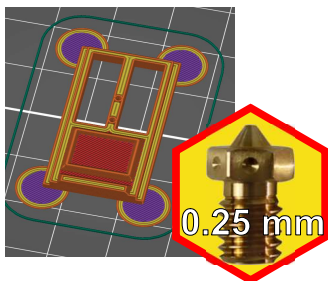
rambarde.stl



porte av.stl



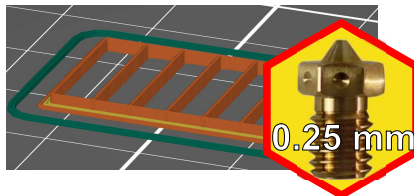
Couche 0.1 mm
Remplissage 10 %
sans support
Pla marron



fenetre annexe.stl



Couche 0.1mm
Remplissage 10 %
sans support
Pla noir



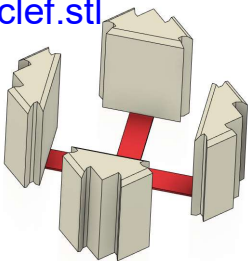
porte arriere.stl



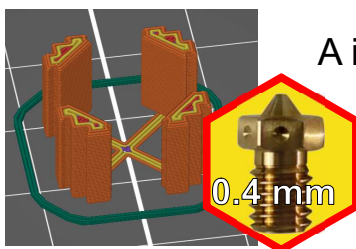
Couche 0.1mm
Remplissage 10 %
sans support
Pla gris foncé



clef.stl



Couche 0.1 mm
Remplissage 10 %
sans support
Pla blanc

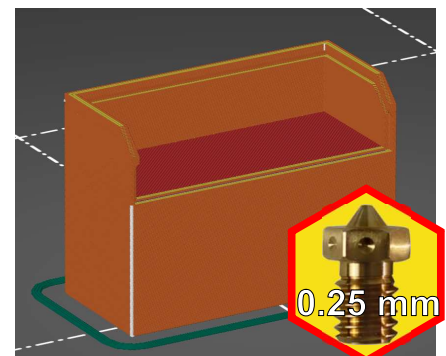
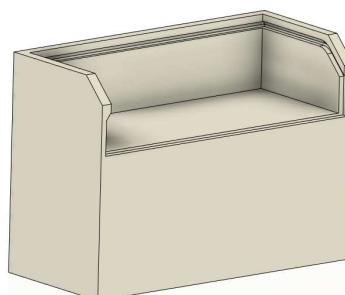


A imprimer 3 fois

presentoir.stl

Couche 0.1 mm
Remplissage 10 %
sans support
Pla blanc

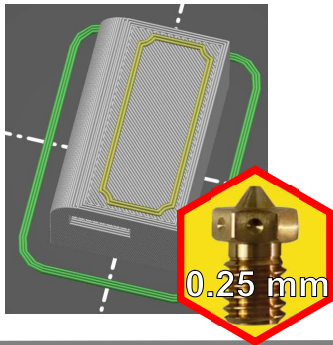
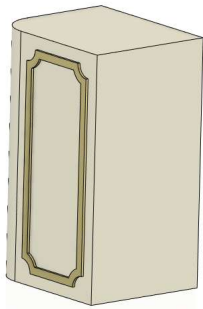
A imprimer 2 fois



Boulangerie DUPIN

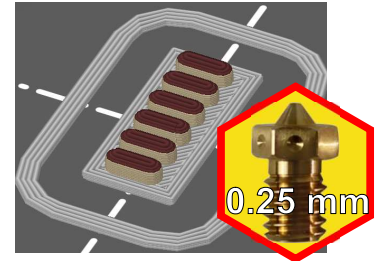
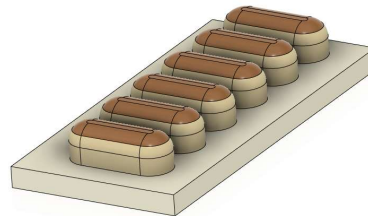
comptoir.stl

Couche 0.1 mm
Remplissage 10 %
sans support
Pla blanc ≤ 10 mm
doré > 10 mm



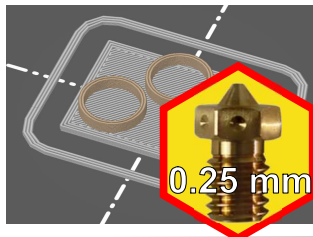
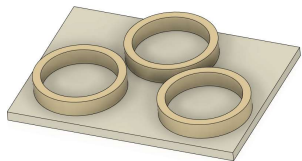
Couche 0.1 mm
Remplissage 10 %
sans support
Pla blanc ≤ 0.6 mm
beige $0.6 <$ < 1.4 mm
marron > 1.4 mm

plateau eclair.stl



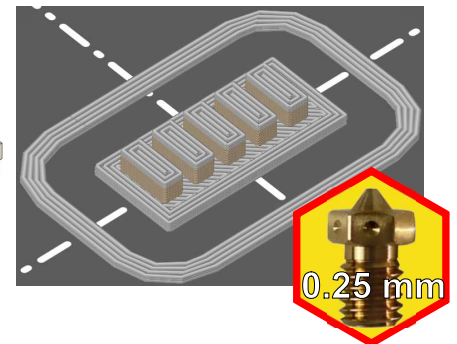
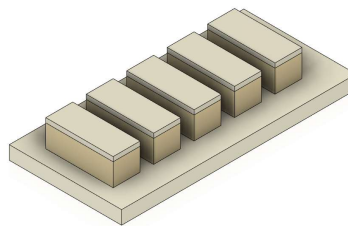
plateau tarte.stl

Couche 0.1 mm
Remplissage 10 %
sans support
Pla blanc ≤ 0.6 mm
beige > 0.6 mm

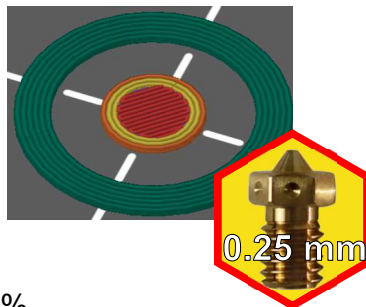
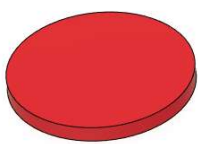


plateau gateau.stl

Couche 0.1 mm
Remplissage 10 %
sans support
Pla blanc ≤ 0.6 mm
beige $0.6 <$ < 1.5 mm
marron > 1.5 mm



interieur tarte.stl

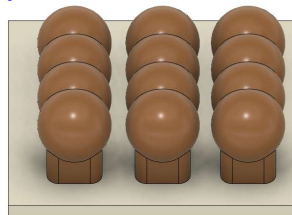


Couche 0.1 mm
Remplissage 10 %
sans support
Pla rouge

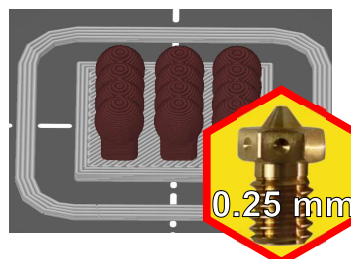
A imprimer de préférence
sur un plateau texturé

A imprimer 3 fois

plateau brioche.stl



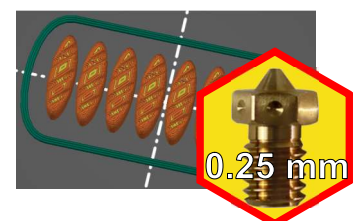
Couche 0.05 mm
Remplissage 10 %
sans support
Pla blanc ≤ 0.6 mm
Pla marron > 0.6 mm



pains.stl

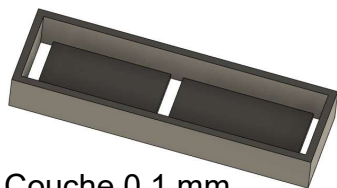
Couche 0.05 mm
Remplissage 10 %
sans support
Pla beige

A imprimer 2 fois

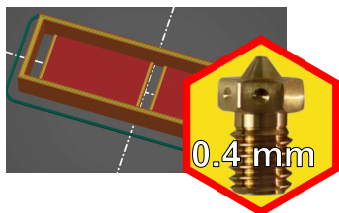


Boulangerie DUPIN

support led.stl



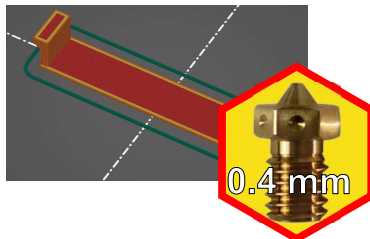
Couche 0.1 mm
Remplissage 10 %
sans support
Pla noir



plafonnier.stl



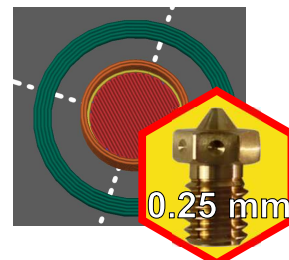
Couche 0.1 mm
Remplissage 10 %
sans support
Pla translucide



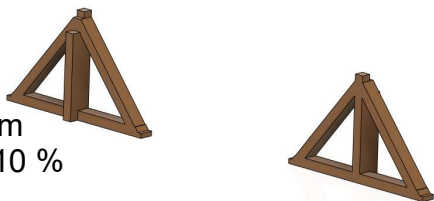
horloge.stl



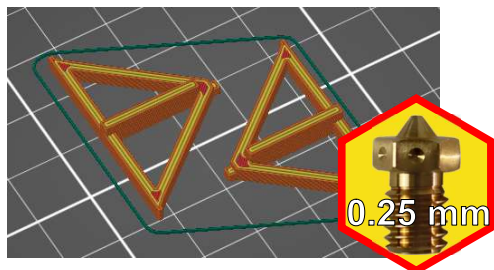
Couche 0.1 mm
Remplissage 10 %
sans support
Pla blanc



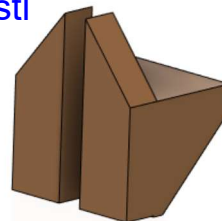
poutre.stl



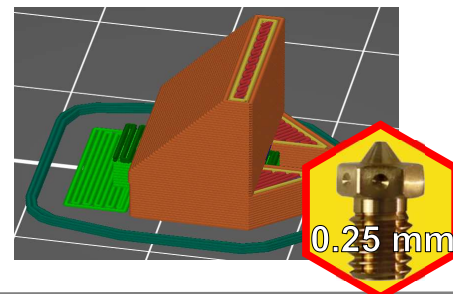
Couche 0.1 mm
Remplissage 10 %
sans support
Pla marron



support cheminee.stl



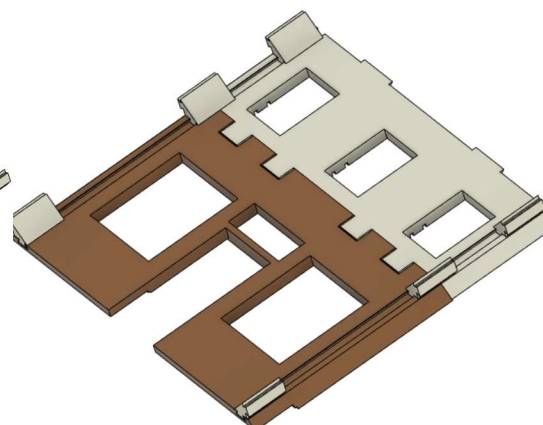
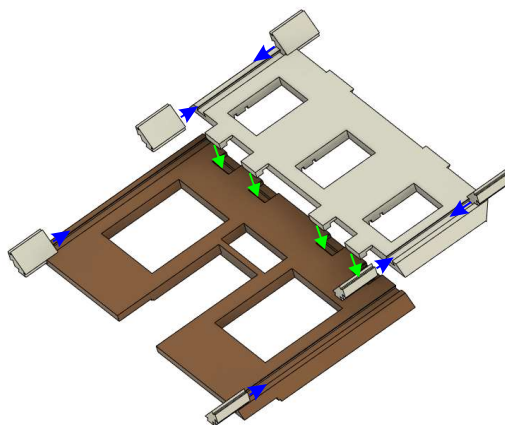
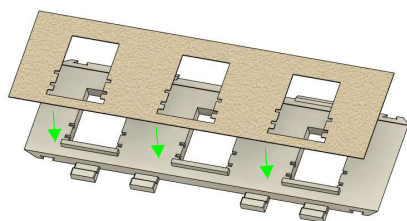
Couche 0.1 mm
Remplissage 10 %
sans support
Pla marron



1

→ Glisser

→ Coller

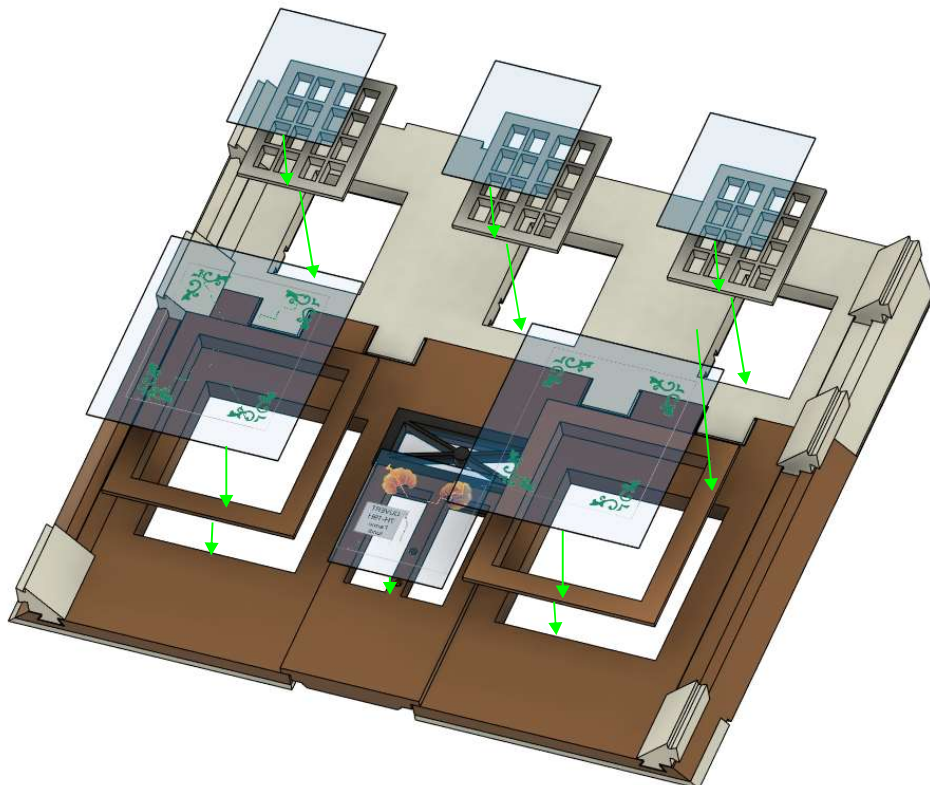


crepi facade.stl
haut facade.stl
bas.facade.stl
clef.stl

Boulangerie DUPIN

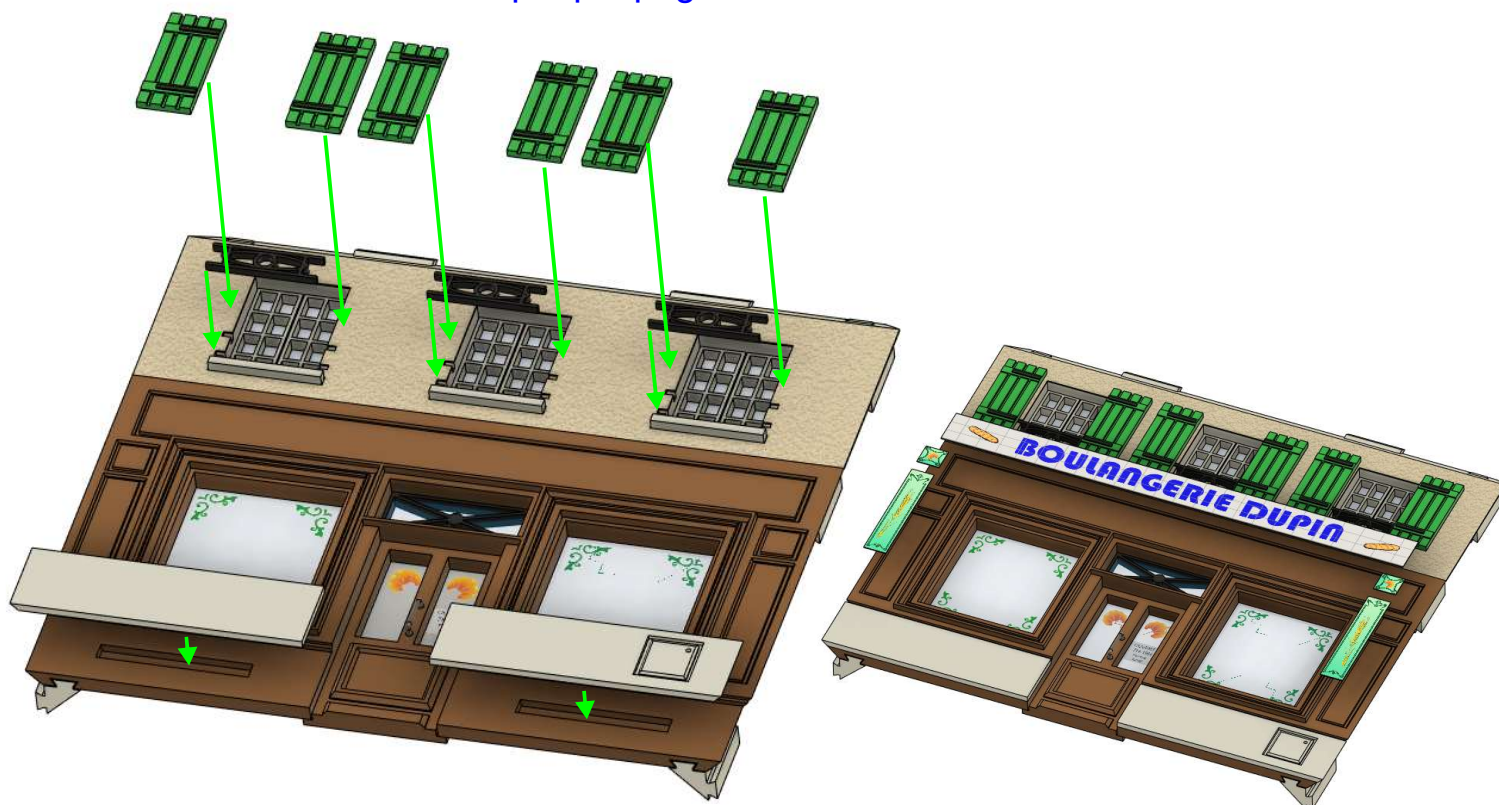
2

fenetre.stl
fenetre haut.stl
vasistas.stl
porte.stl
vitrage.jpg



3

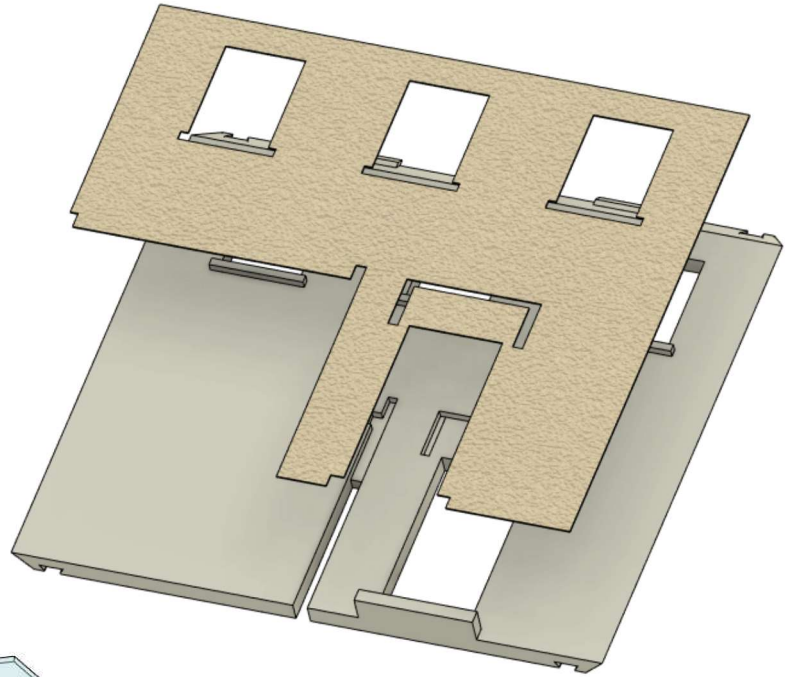
volet.stl
bas.stl
rambarde.stl
plaque.pngl



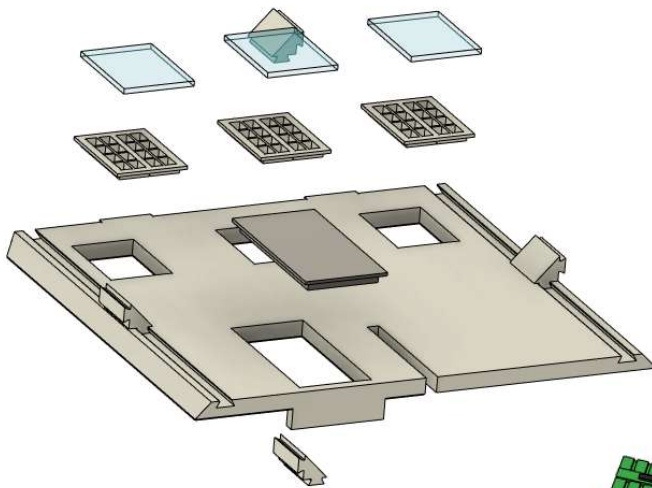
Boulangerie DUPIN

4

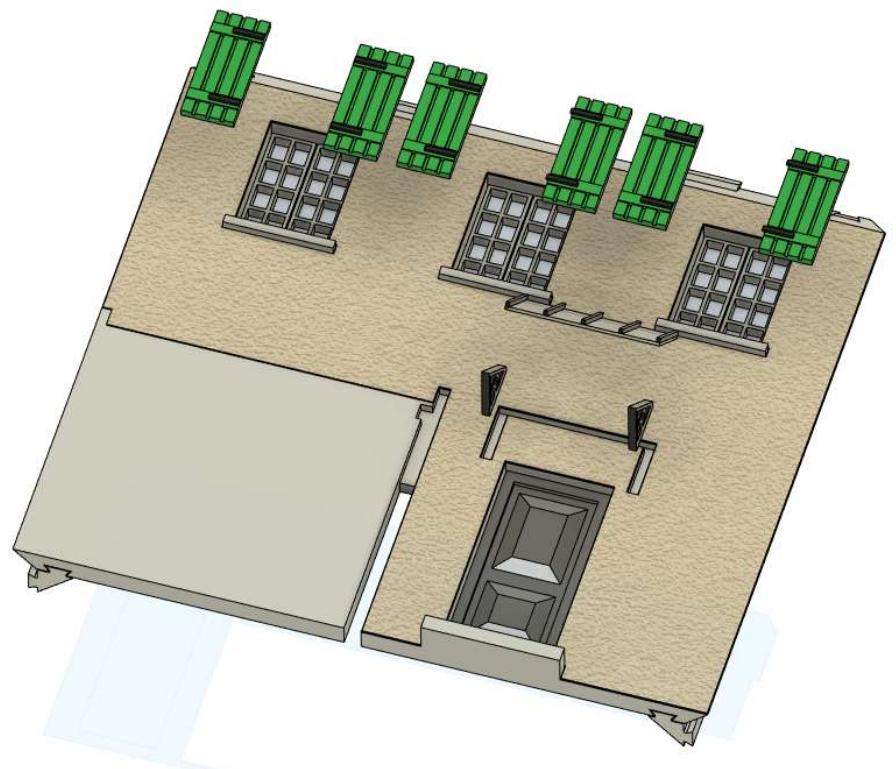
arriere.stl
crepi arriere.stl



fenetre haut.stl
clef.stl
porte ar.stl
vitrage.png



volet.stl
verriere.stl
porte ar.stl

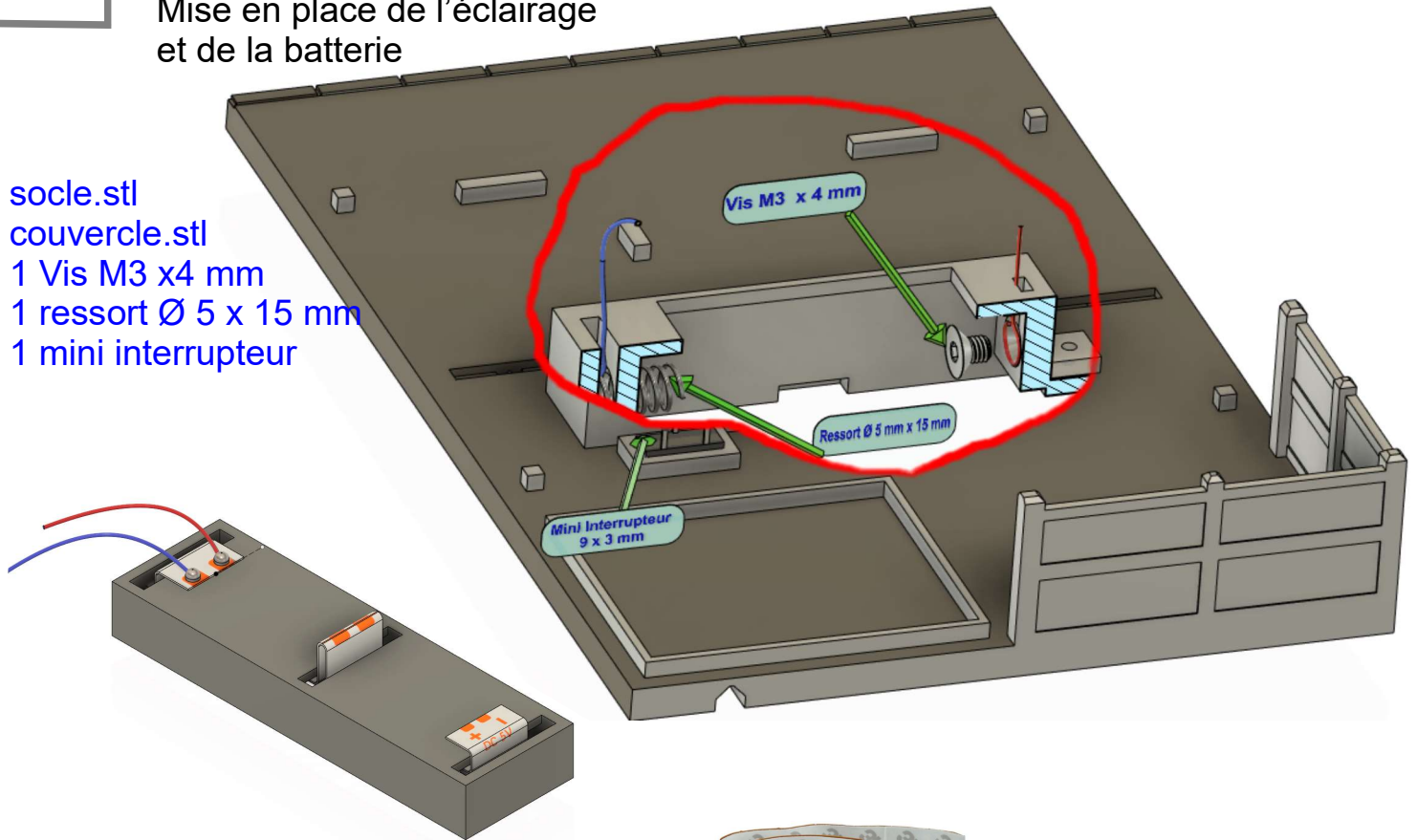


Boulangerie DUPIN

5

Optionnel
Mise en place de l'éclairage
et de la batterie

socle.stl
couvercle.stl
1 Vis M3 x4 mm
1 ressort Ø 5 x 15 mm
1 mini interrupteur



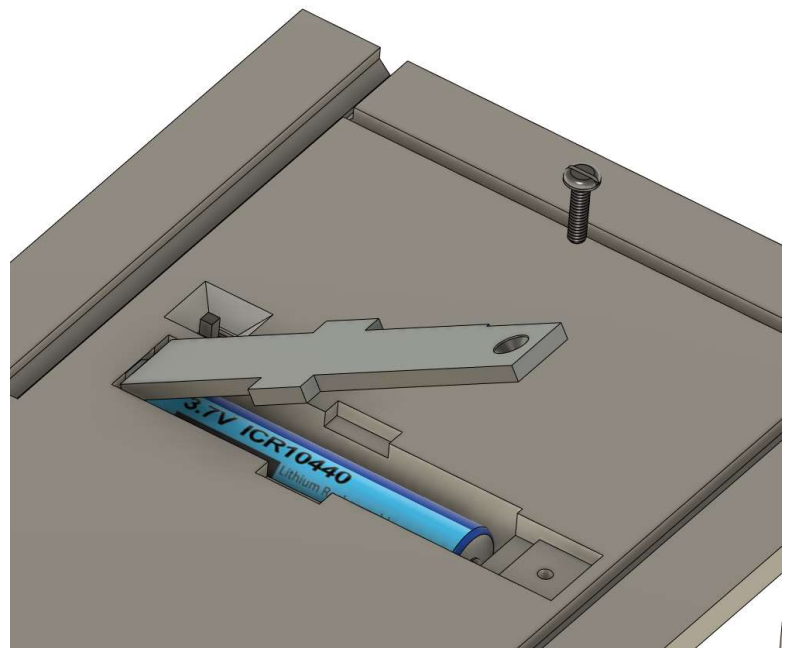
2 Led découpées dans un ruban de led
<https://www.action.com/fr-fr/p/bande-de-led-2/>



1 Batterie 10440

<https://www.amazon.fr/Rechargeable-10440-Li-Ion-Batterie-Pi%C3%A8ces/dp/B074V2QVC3>

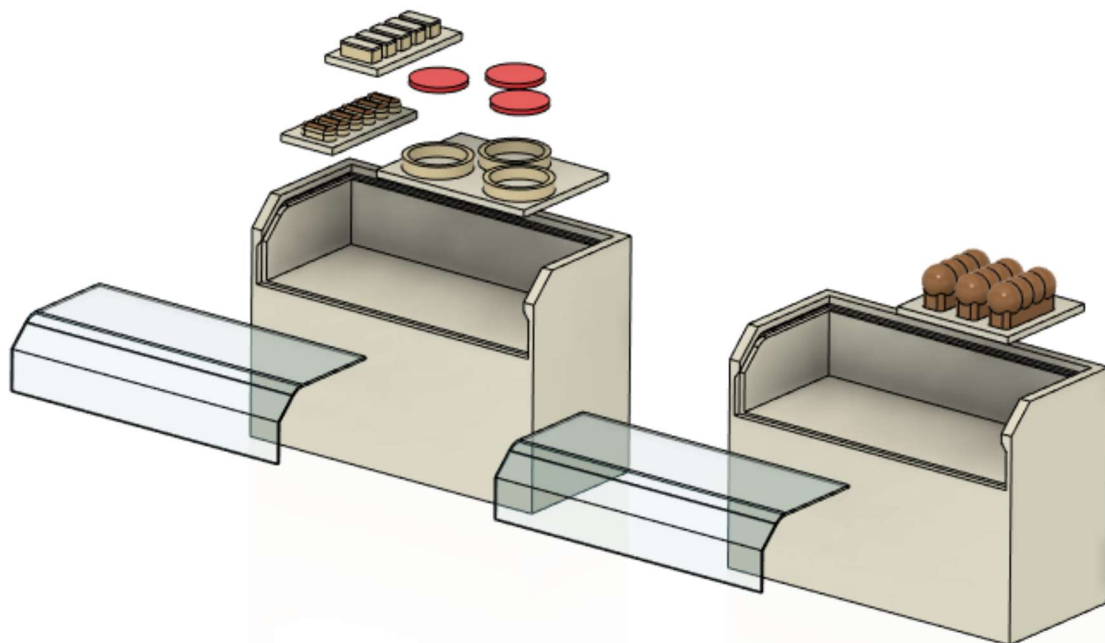
1 Vis M2 x 8 mm



Boulangerie DUPIN

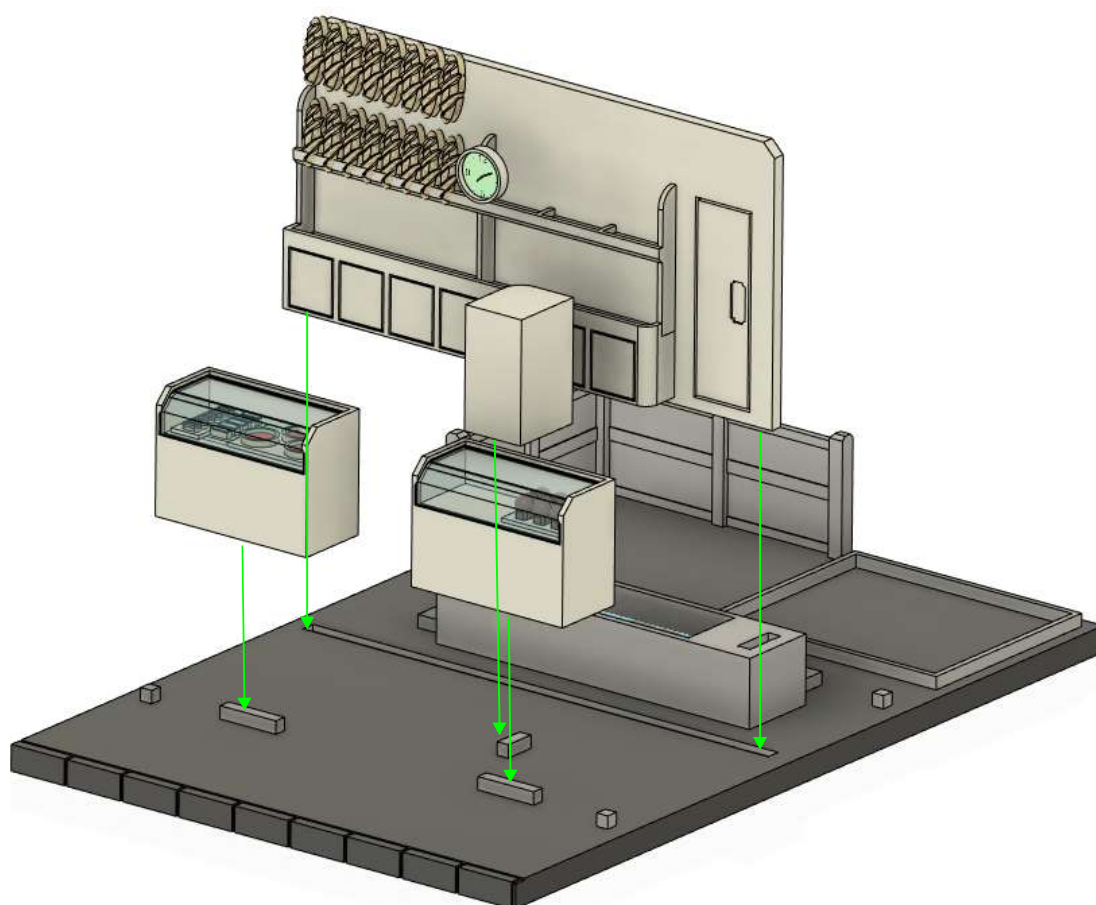
6

présentoir.stl
plateau gateaux.stl
plateau tartre.stl
plateau éclair.stl
plateau brioche.stl
vitrage.png



7

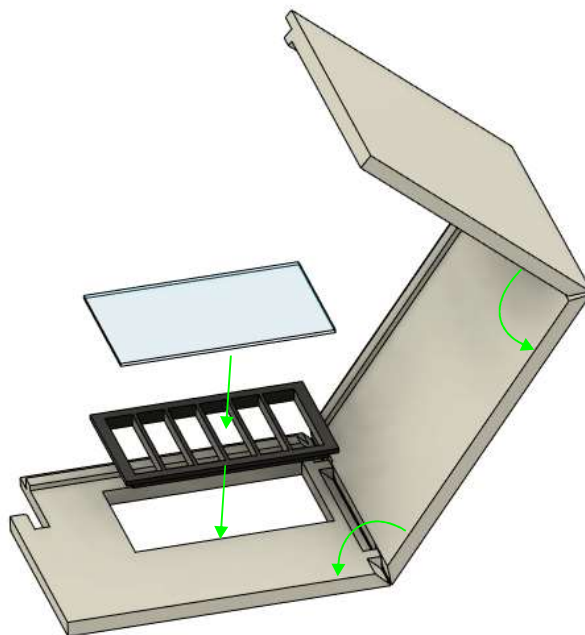
horloge.stl
paroi.stl
comptoir.stl



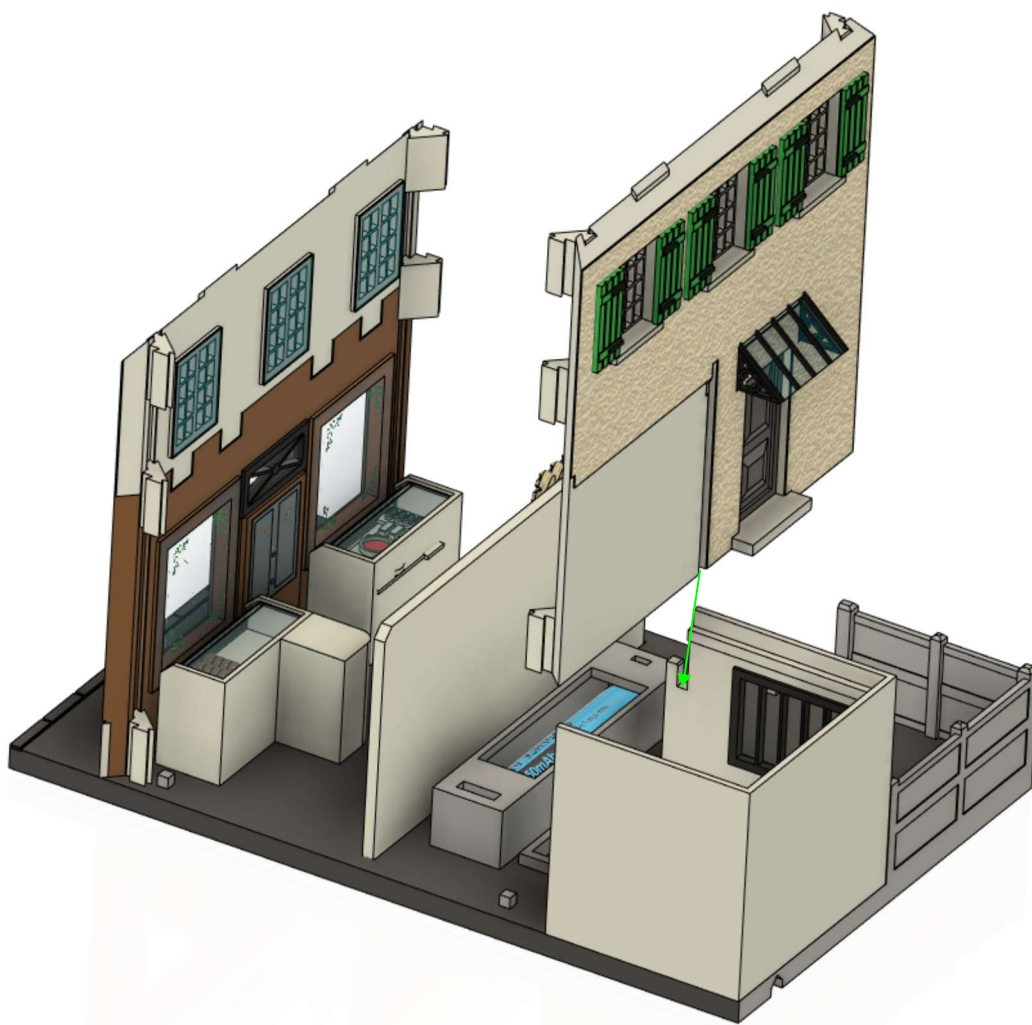
Boulangerie DUPIN

8

annexe.stl
fenetre annexe.stl
vitrage.png

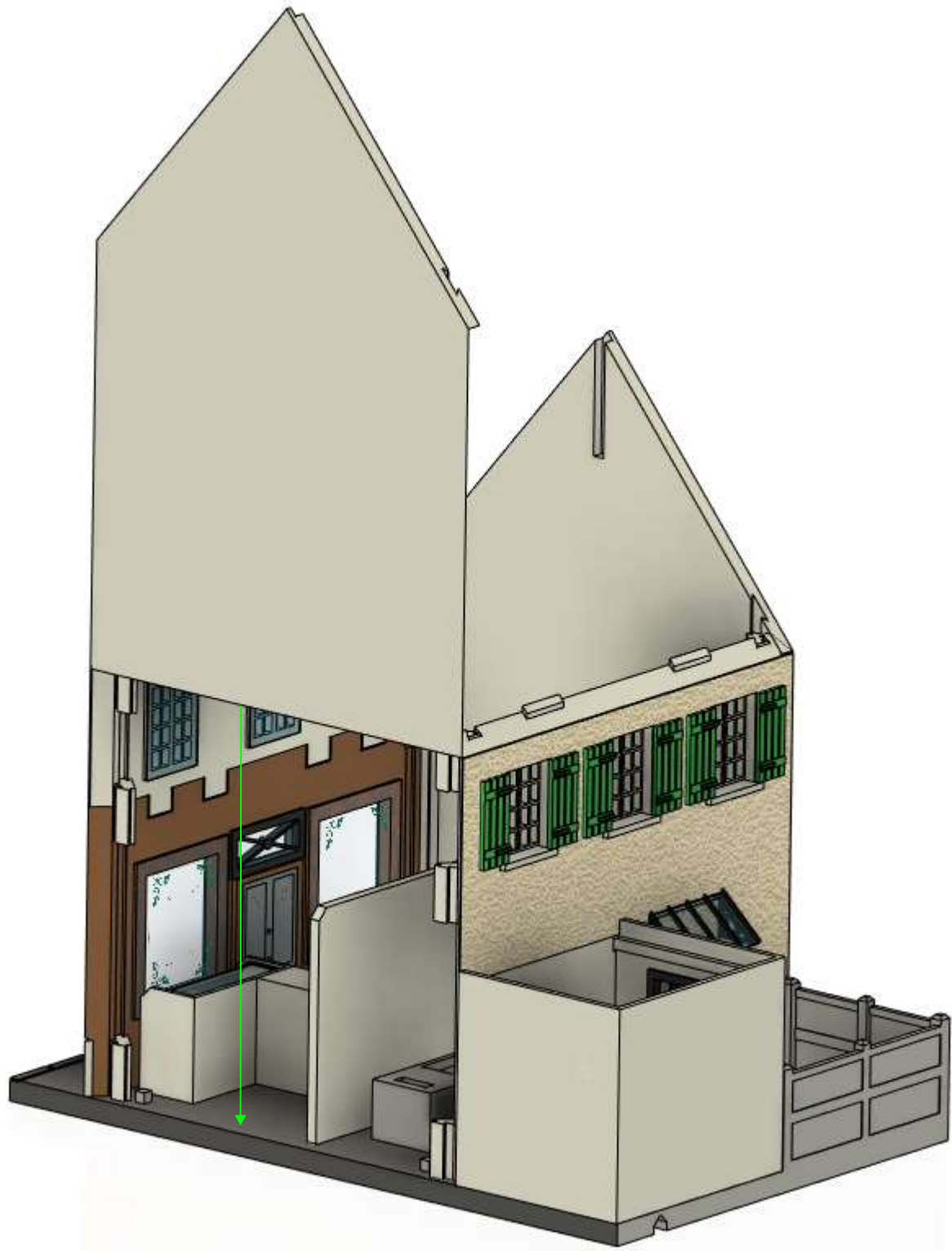


9



Boulangerie DUPIN

10



Boulangerie DUPIN

2

cheminee.stl
faitiere.stl
toit.stl
poutre.stl
support cheminee.stl
chainau.stl
support led.stl
plafonnier.stl
plancher etage.stl

