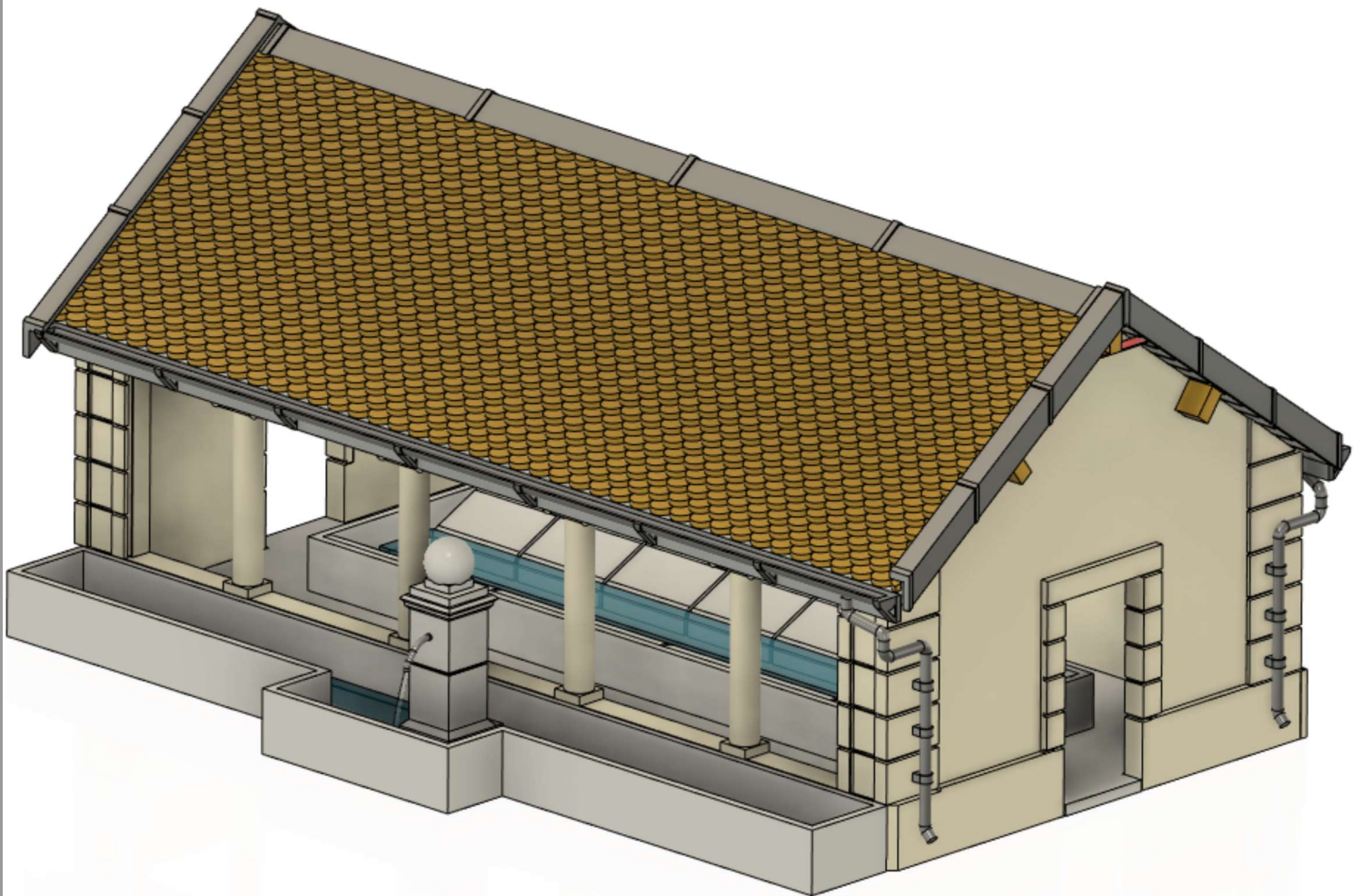
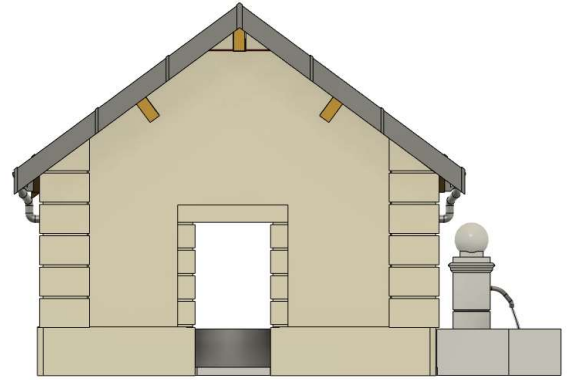
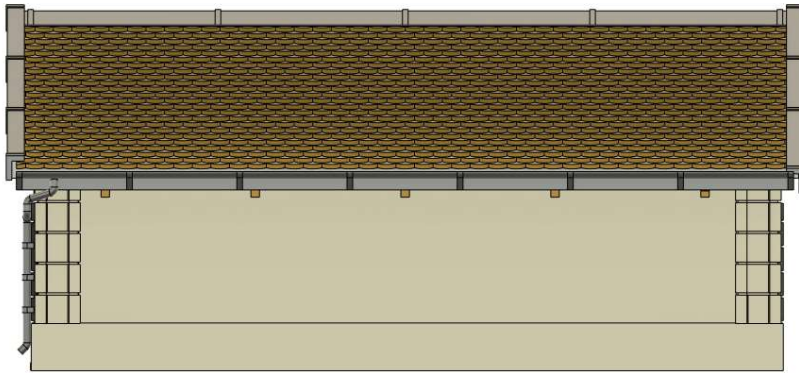
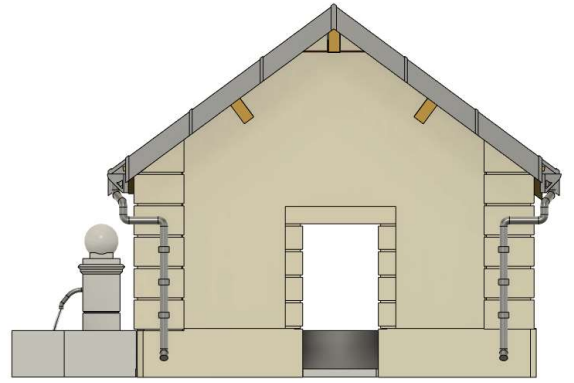
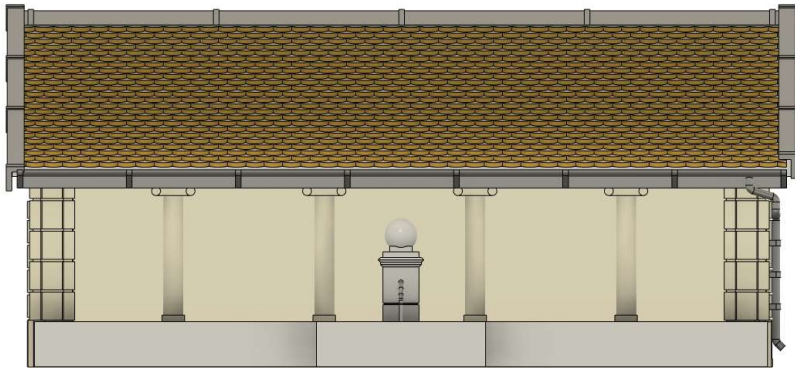


lavoir



lavoir



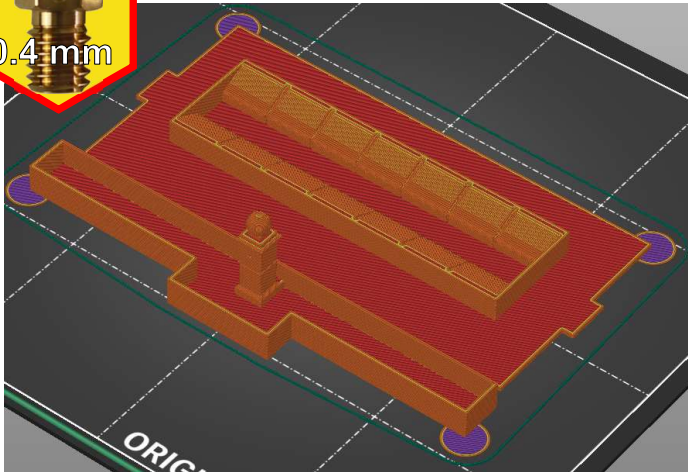
En rouge des aides à
l'impression à supprimer
Utiliser un cutter bien aiguisé



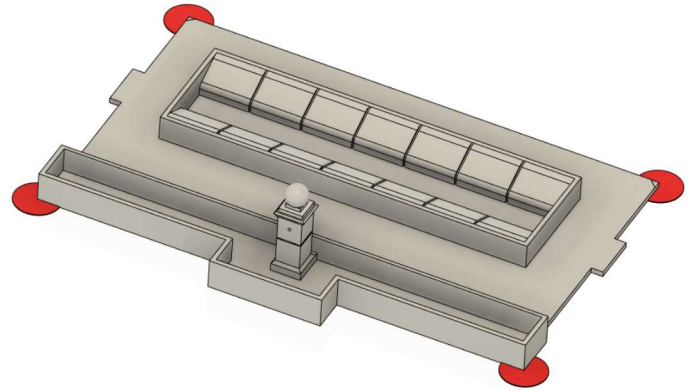
A imprimer avec
une buse de 0.25 mm maximum



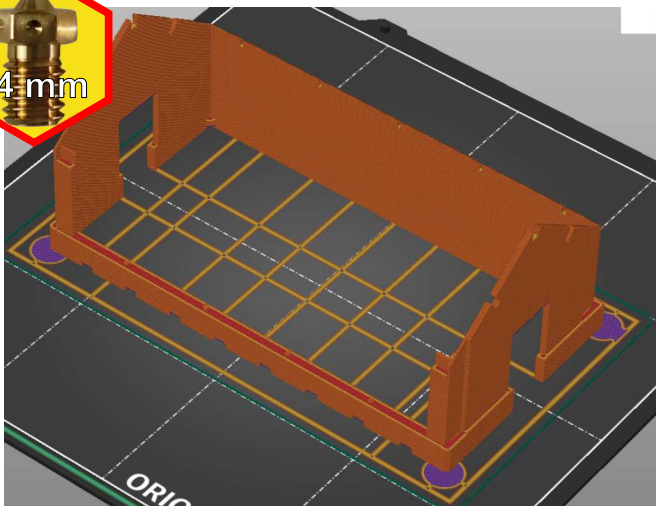
A imprimer avec
une buse de 0.4 mm maximum



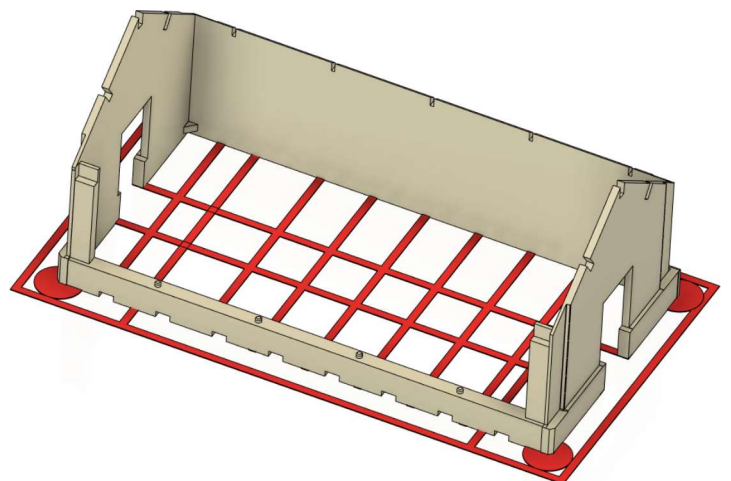
Couche 0.2 mm
Remplissage 10 %
sans support
Pla gris ciment



[socle.stl](#)

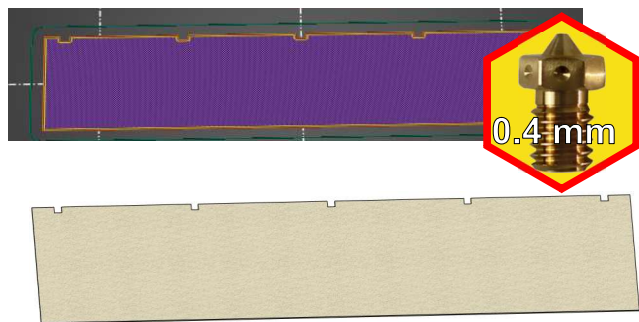


Couche 0.2 mm
Remplissage 10 %
sans support
Pla gris ciment



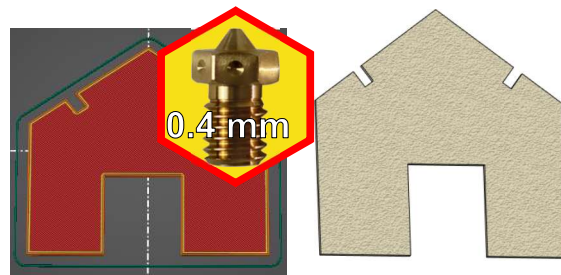
[murs.stl](#)

lavoir



[crepi face ar.stl](#)

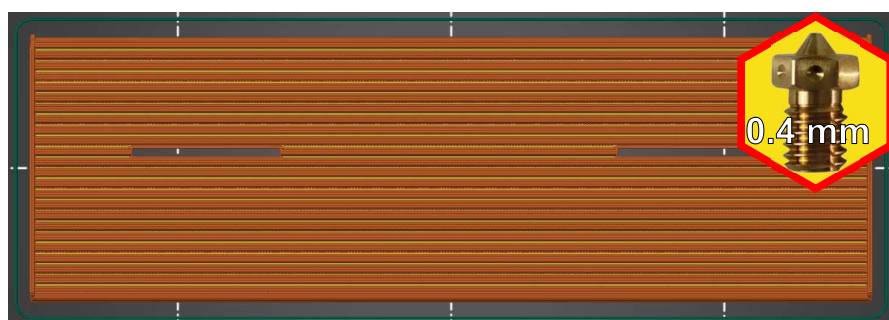
Couche 0.1 mm
Remplissage 10 %
sans support
Pla beige



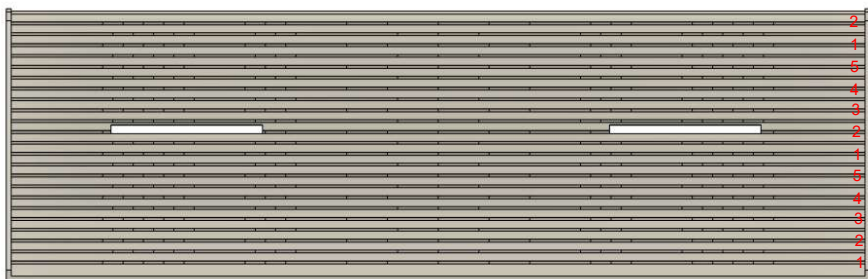
à imprimer 2x

[crepi pignon.stl](#)

a imprimer sur plateau texturé

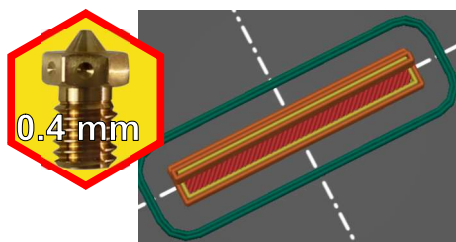


Couche 0.2 mm
Remplissage 10 %
sans support
Pla gris clair

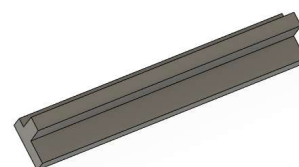


[demitoit.stl](#)

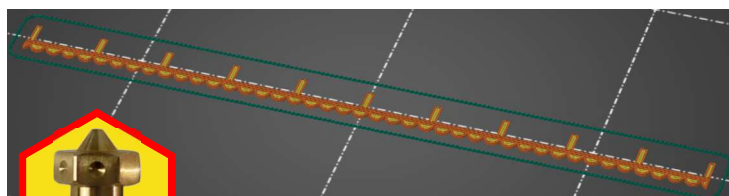
à imprimer 2 x



Couche 0.2 mm
Remplissage 10 %
sans support
Pla gris clair

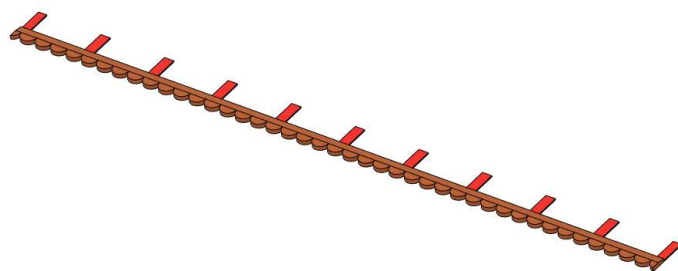


à imprimer 4 x [clefroit.stl](#)



0.4 mm

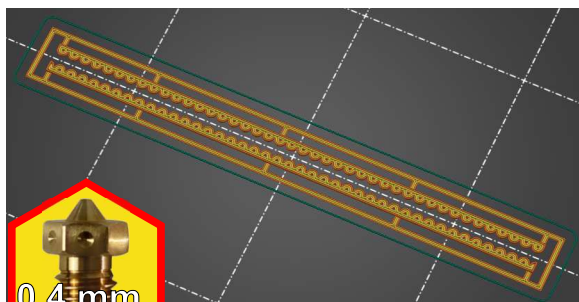
Couche 0.1 mm
Remplissage 10 %
sans support
Pla marron tuile



a imprimer 2 x

[tuile haut.stl](#)

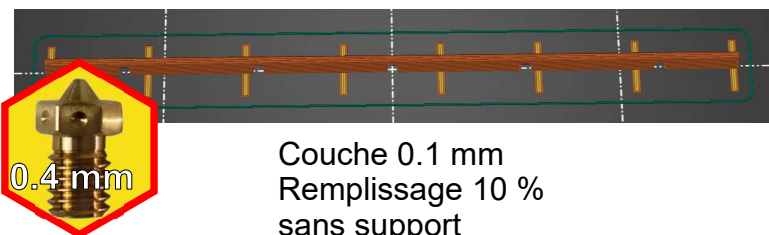
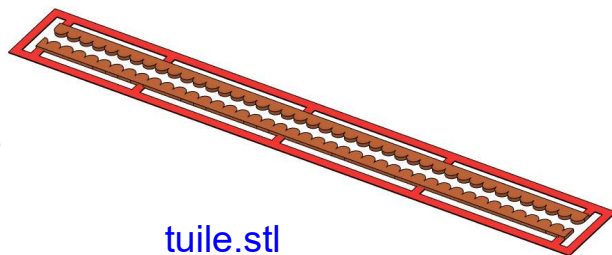
lavoir



Couche 0.1 mm
Remplissage 10 %
sans support
Pla marron tuile

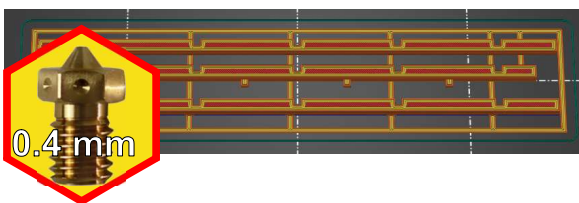
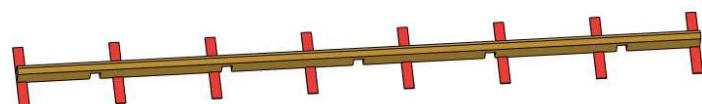
[tuile.stl](#)

à imprimer 24 x



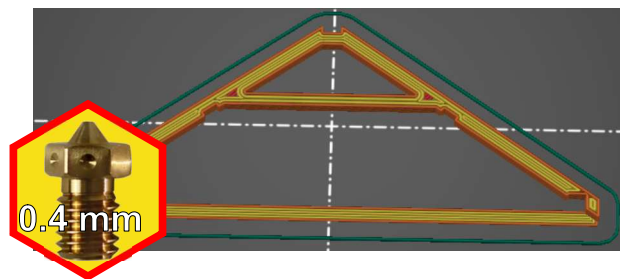
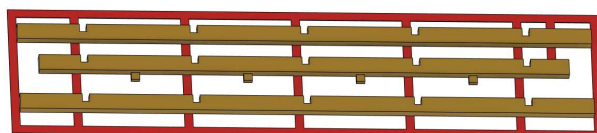
Couche 0.1 mm
Remplissage 10 %
sans support
Pla marron

[poutre faitiere.stl](#)



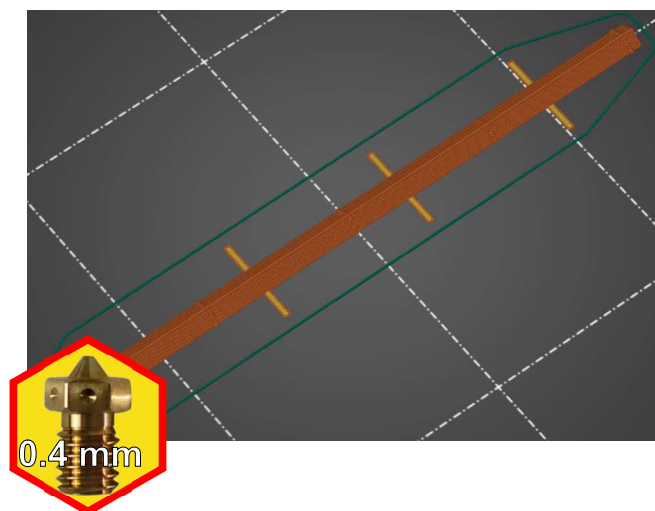
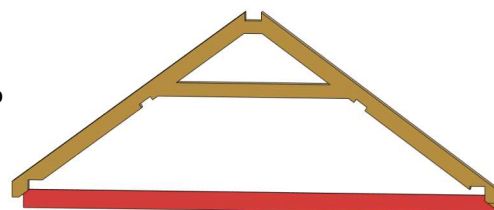
Couche 0.1 mm
Remplissage 10 %
sans support
Pla marron

[poutres.stl](#)



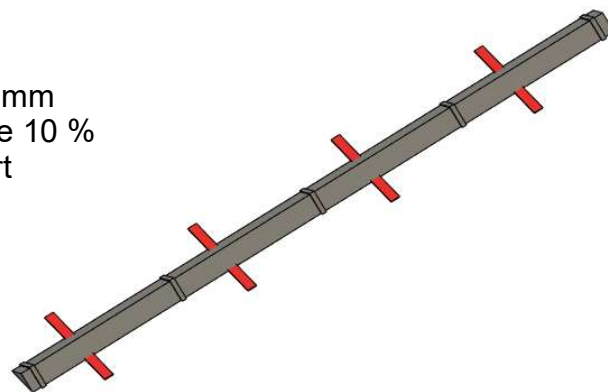
Couche 0.1 mm
Remplissage 10 %
sans support
Pla marron

[chevetre.stl](#)

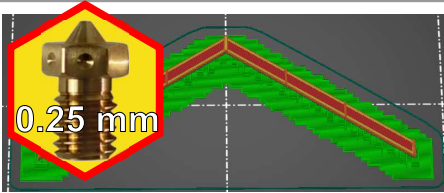


Couche 0.1 mm
Remplissage 10 %
sans support
Pla argent

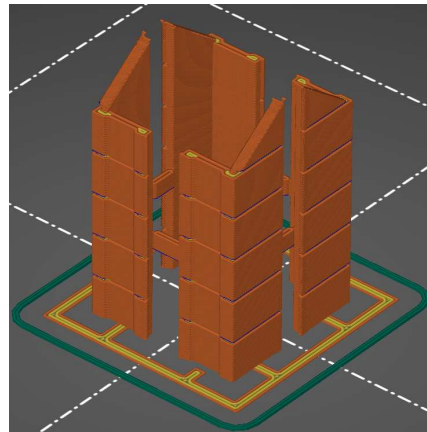
[faitiere.stl](#)



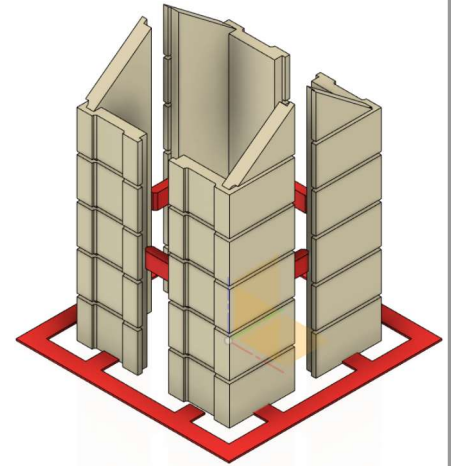
lavoir



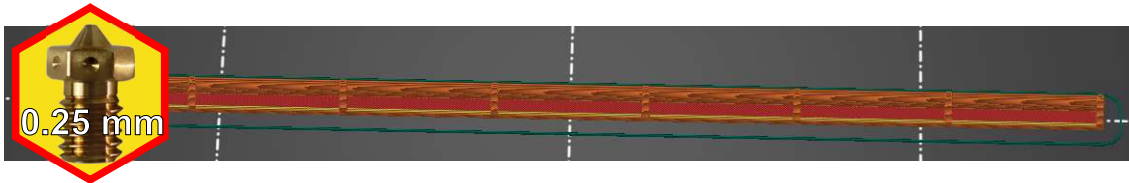
Couche 0.1 mm
Remplissage 10 %
support plateau
Pla argent



Couche 0.1 mm
Remplissage 10 %
sans support
Pla beige



angles.stl



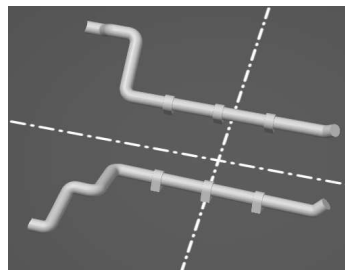
Couche 0.1 mm
Remplissage 10 %
sans support
Pla argent



cheneau



Couche 0.05 mm
Remplissage 10 %
support plateau
Pla argent



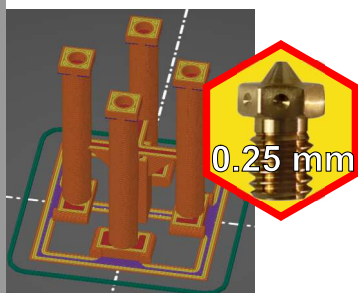
descente



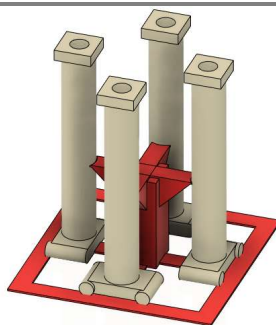
Couche 0.1mm
Remplissage 10 %
sans support
Pla translucide incolore



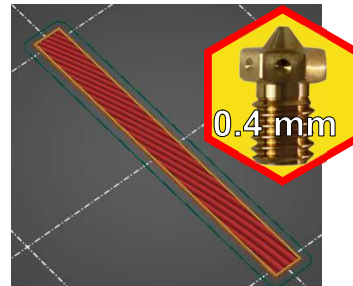
eau fontaine



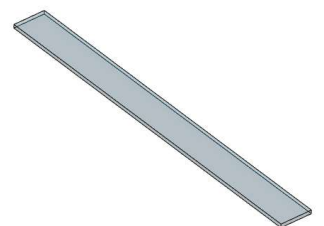
Couche 0.1mm
Remplissage 10 %
sans support
Pla translucide incolore



colonnes



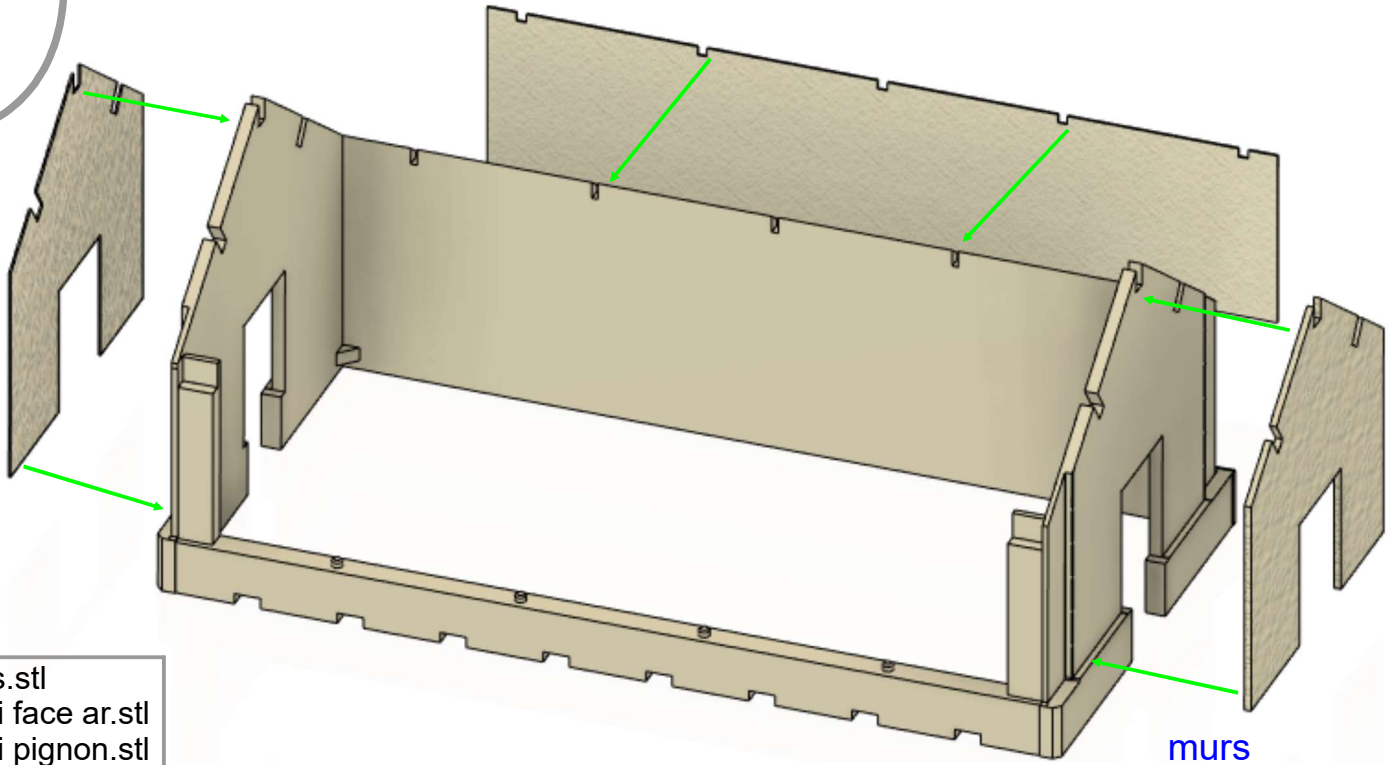
Couche 0.1mm
Remplissage 10 %
sans support
Pla translucide incolore



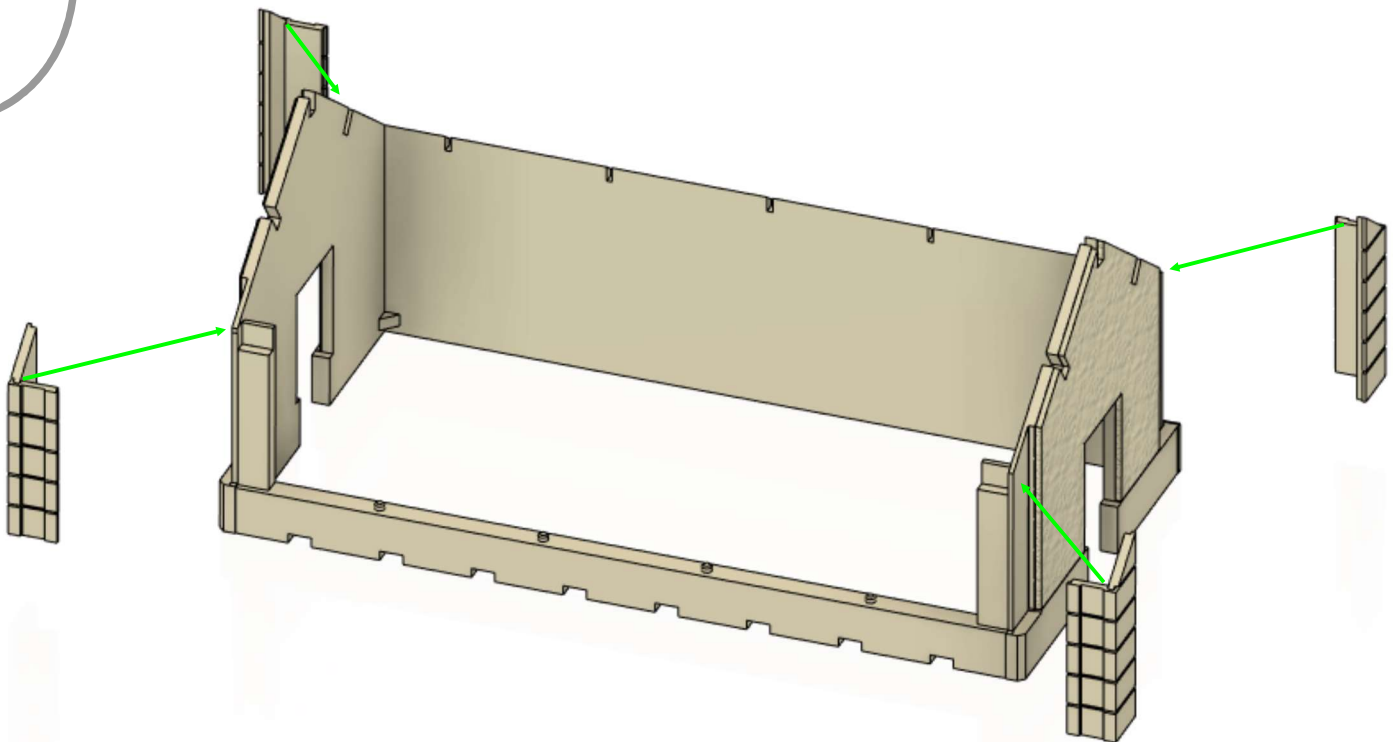
eau lavoir

lavoir

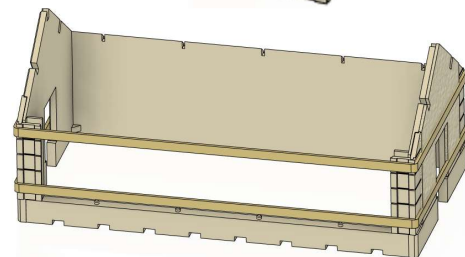
1



2

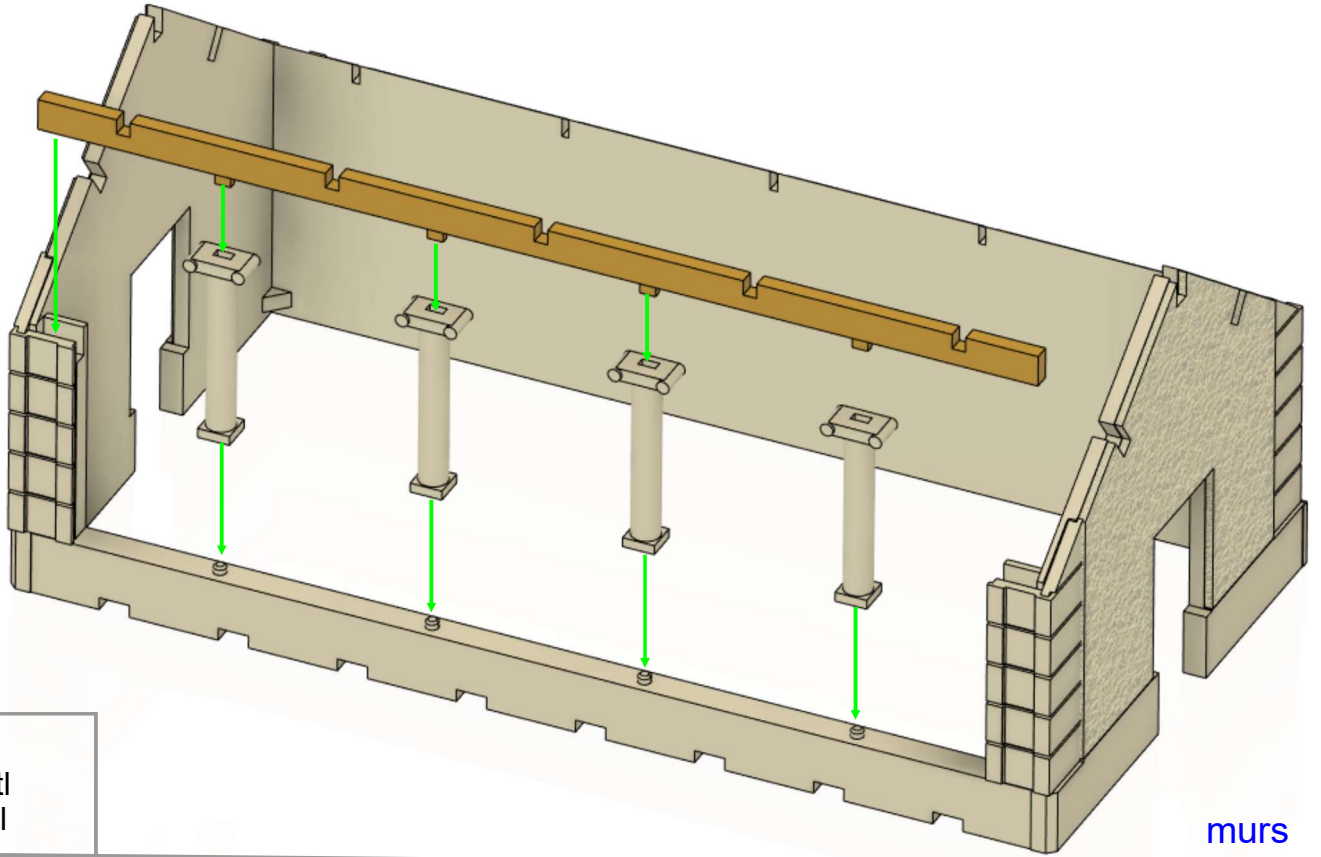


murs
angles.stl

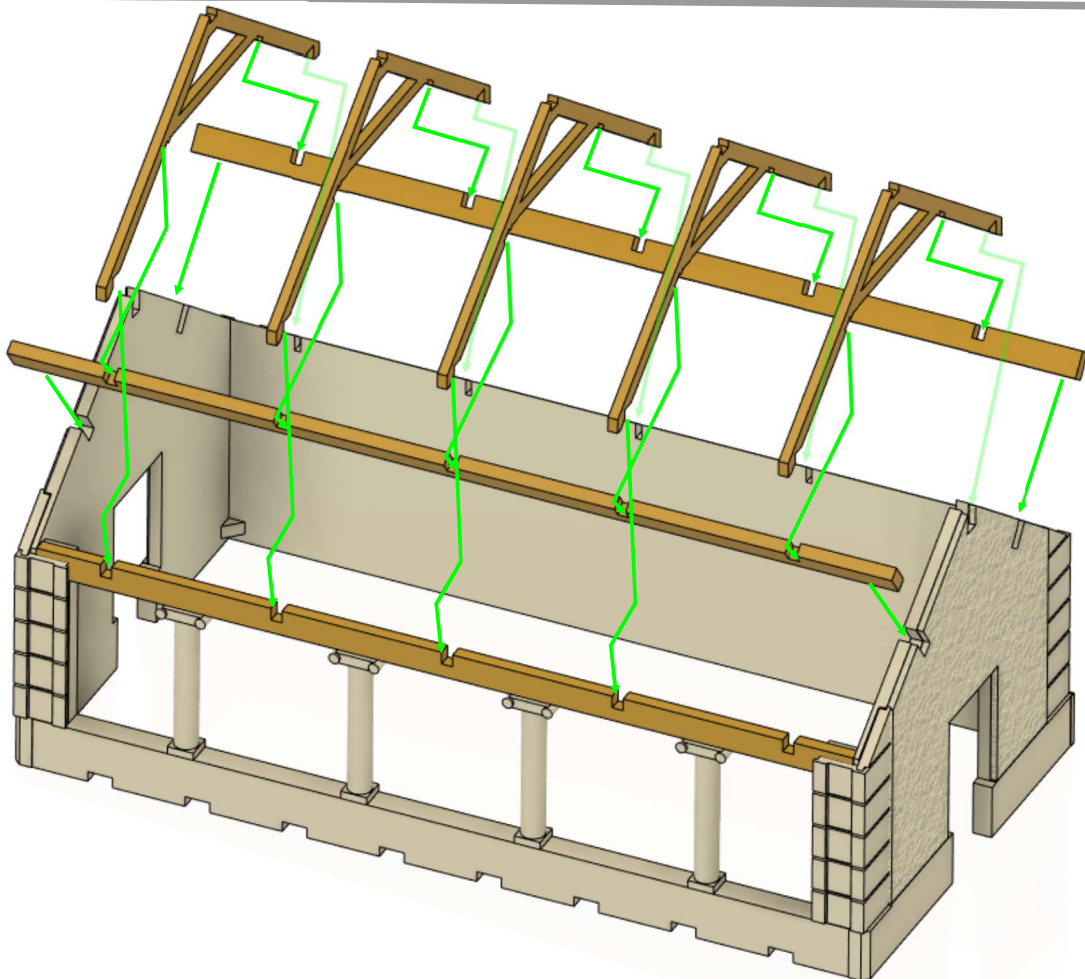


lavoir

3

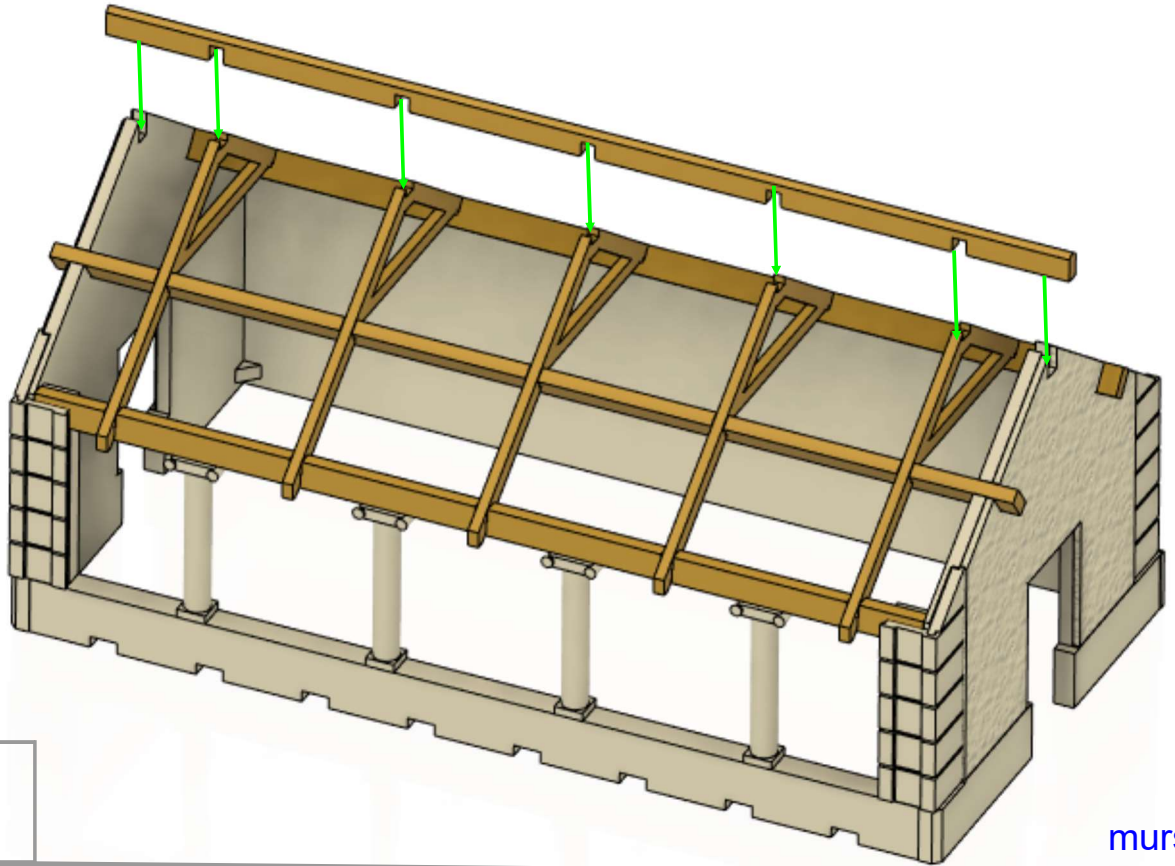


4



lavoir

4



murs
poutre faitiere.stl

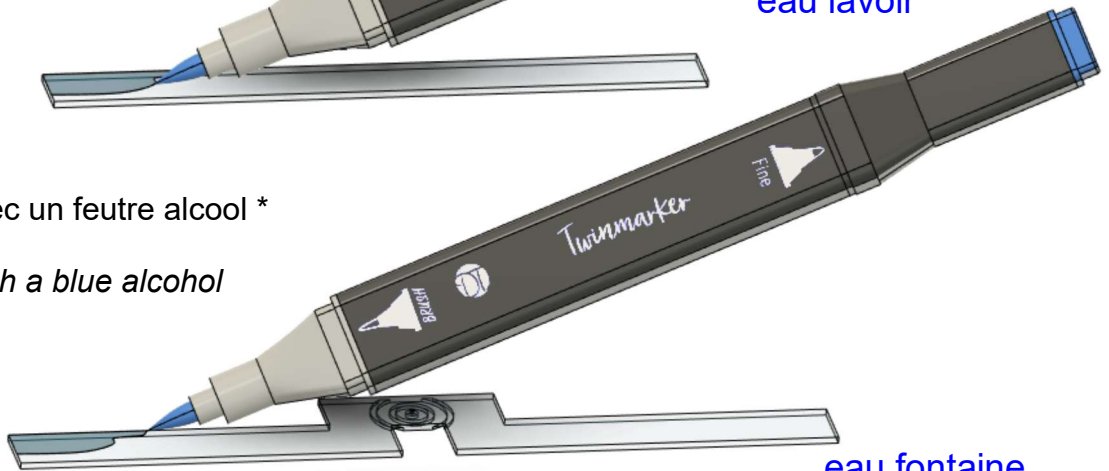
murs

5



eau lavoir

Colorer le dos avec un feutre alcool *
de couleur bleu
*Color the back with a blue alcohol
marker*



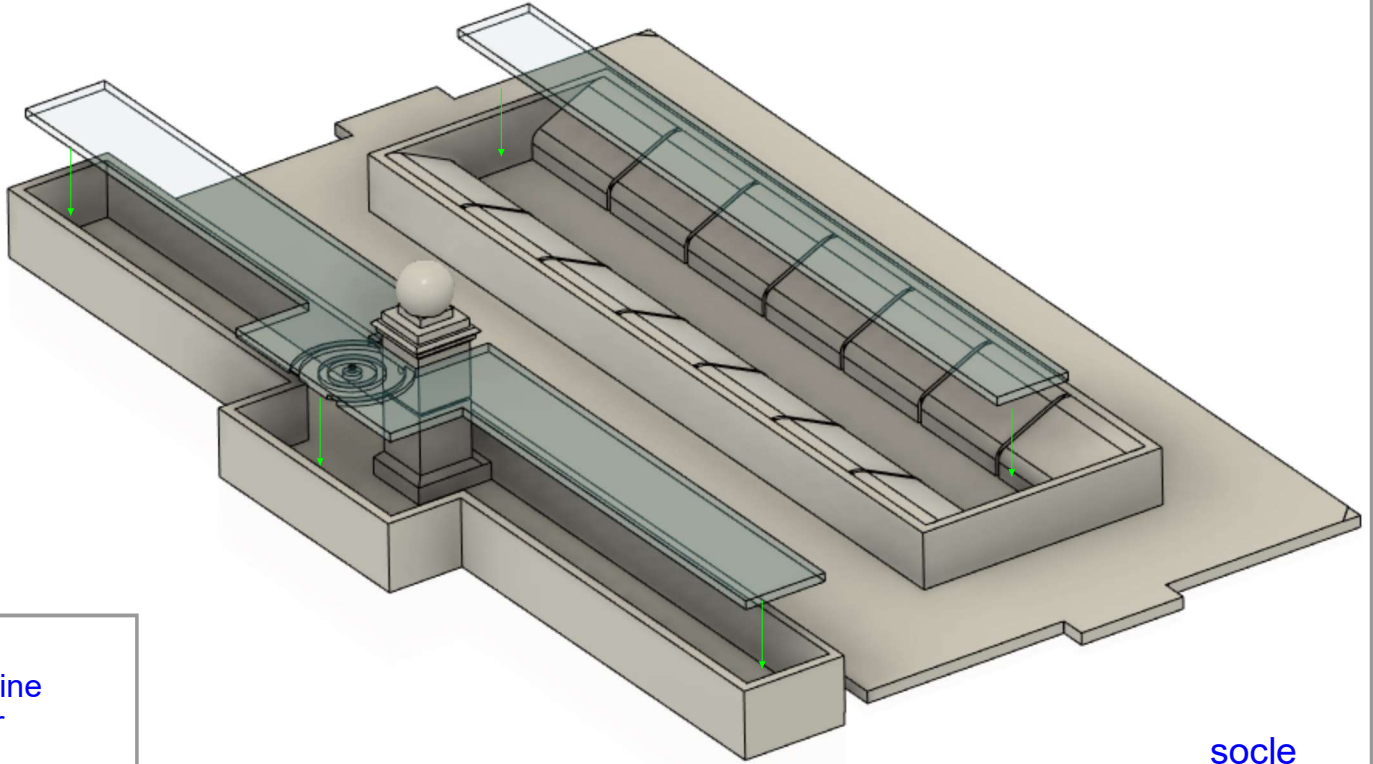
eau fontaine

eau fontaine.stl
eau lavoir.stl

* par exemple : <https://www.action.com/fr-fr/p/decotime-twinmarkers-dc05aa97/>

lavoir

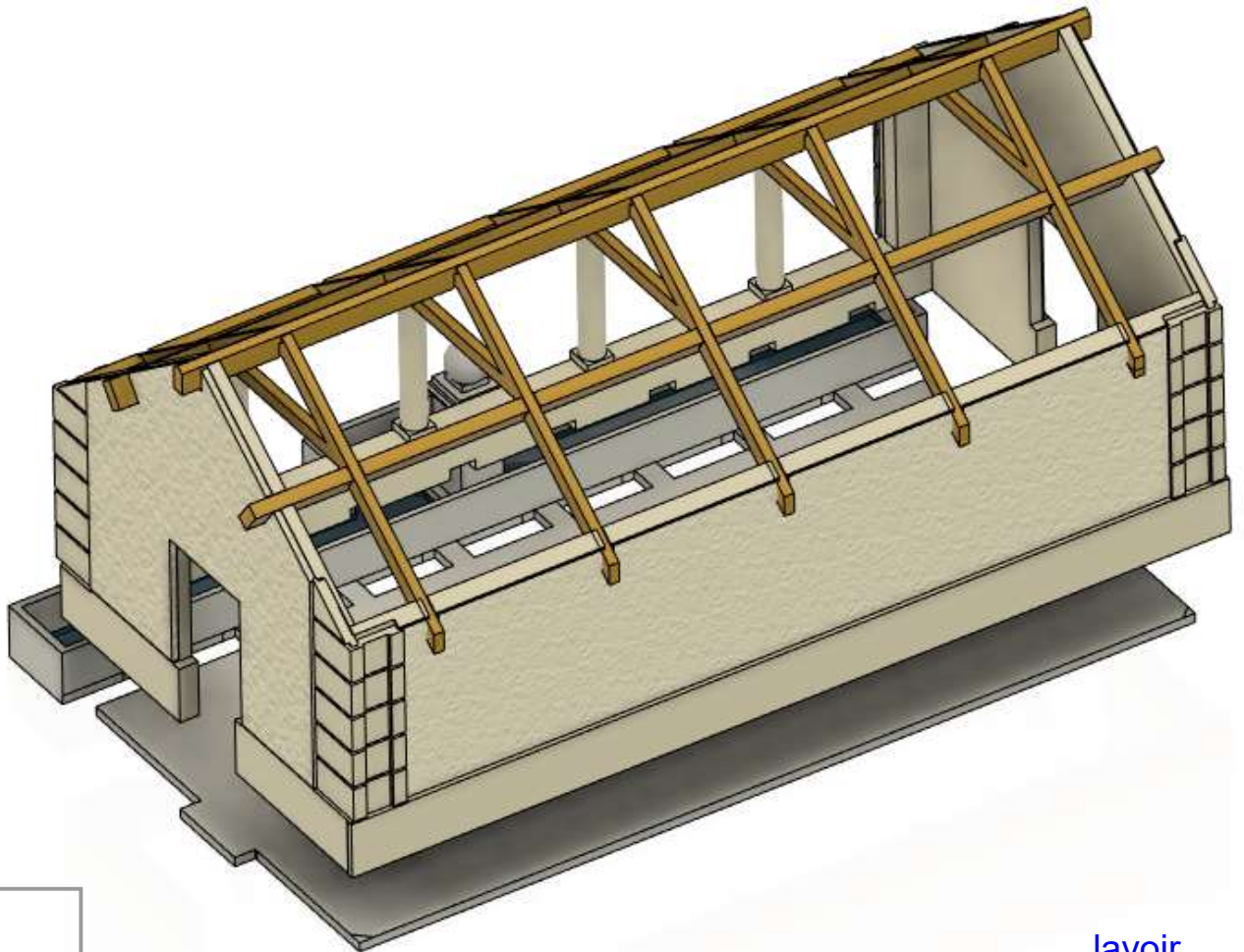
6



murs
eau fontaine
eau lavoir

socle

7

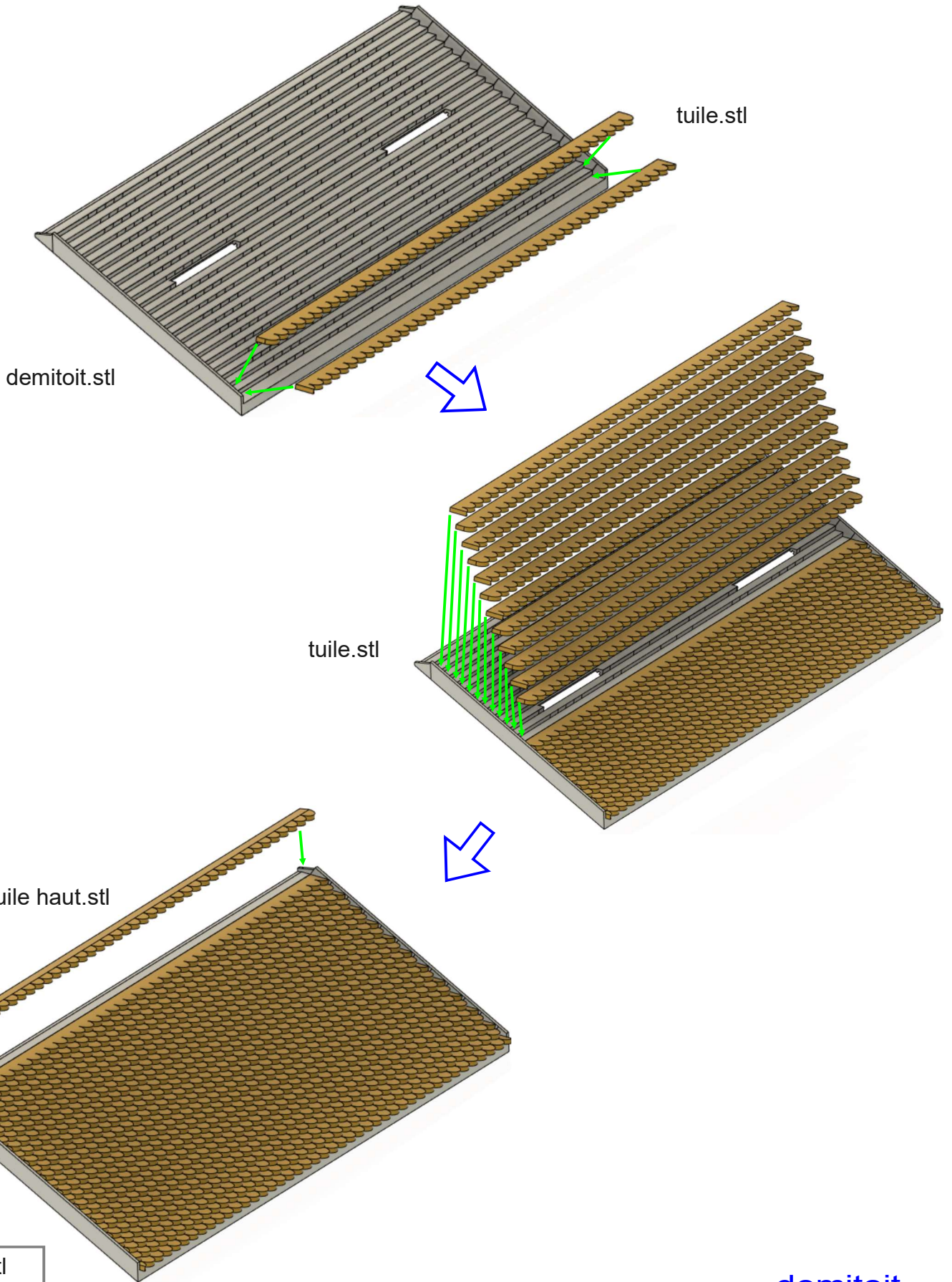


murs
socle

lavoir

lavoit

8

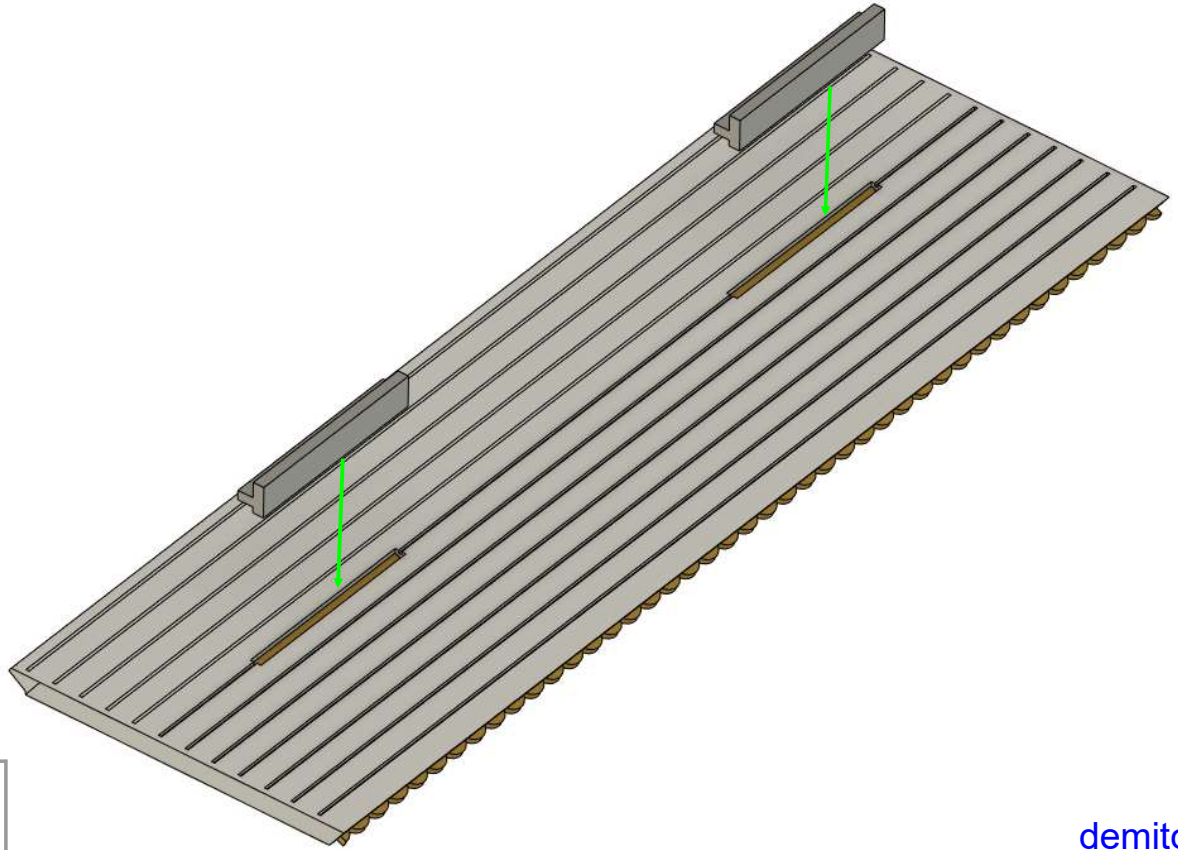


demitoit.stl
tuile.stl
tuile haut.stl

demitoit

lavoir

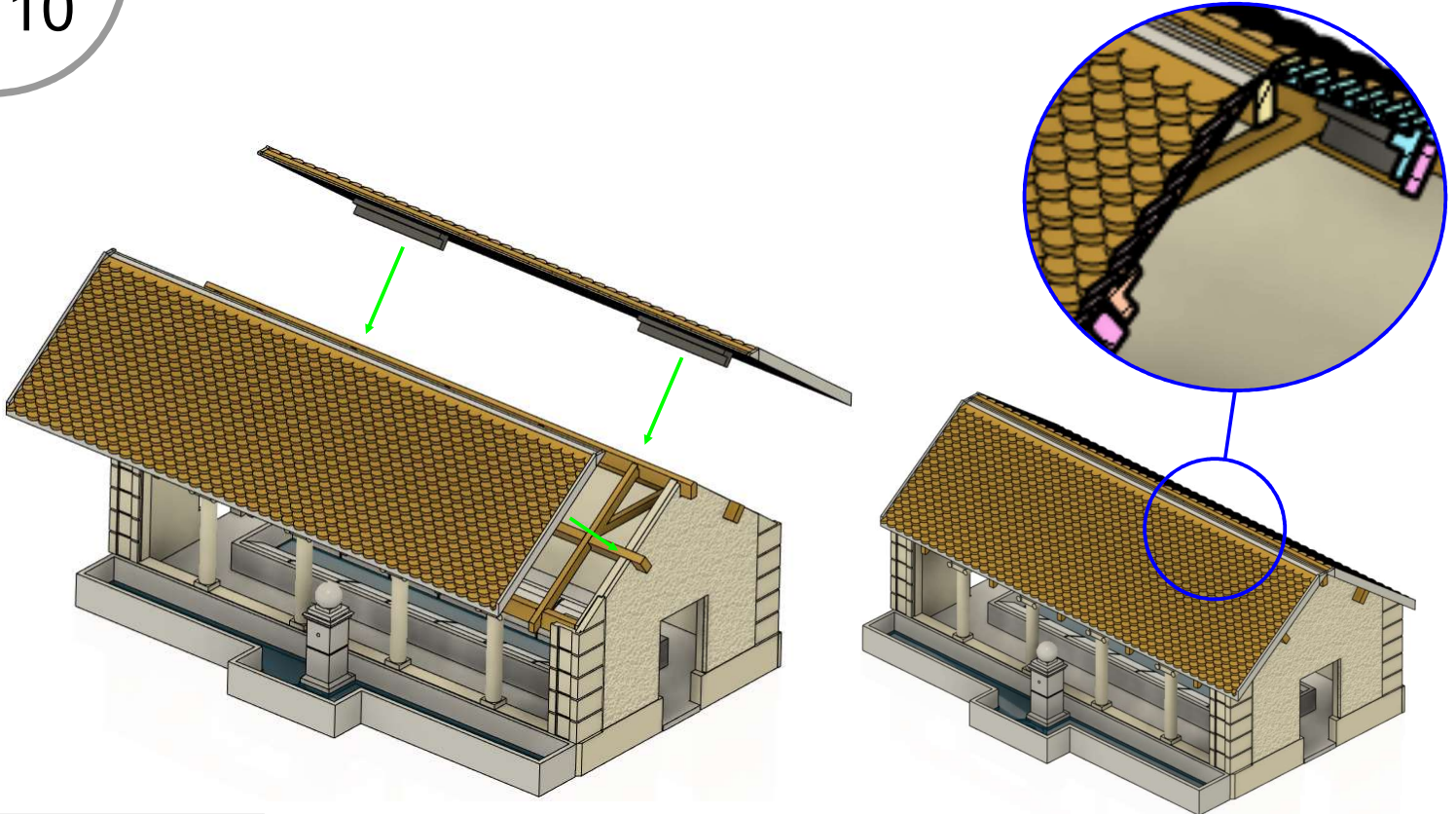
9



demitoit
clef toit.stl

demitoit

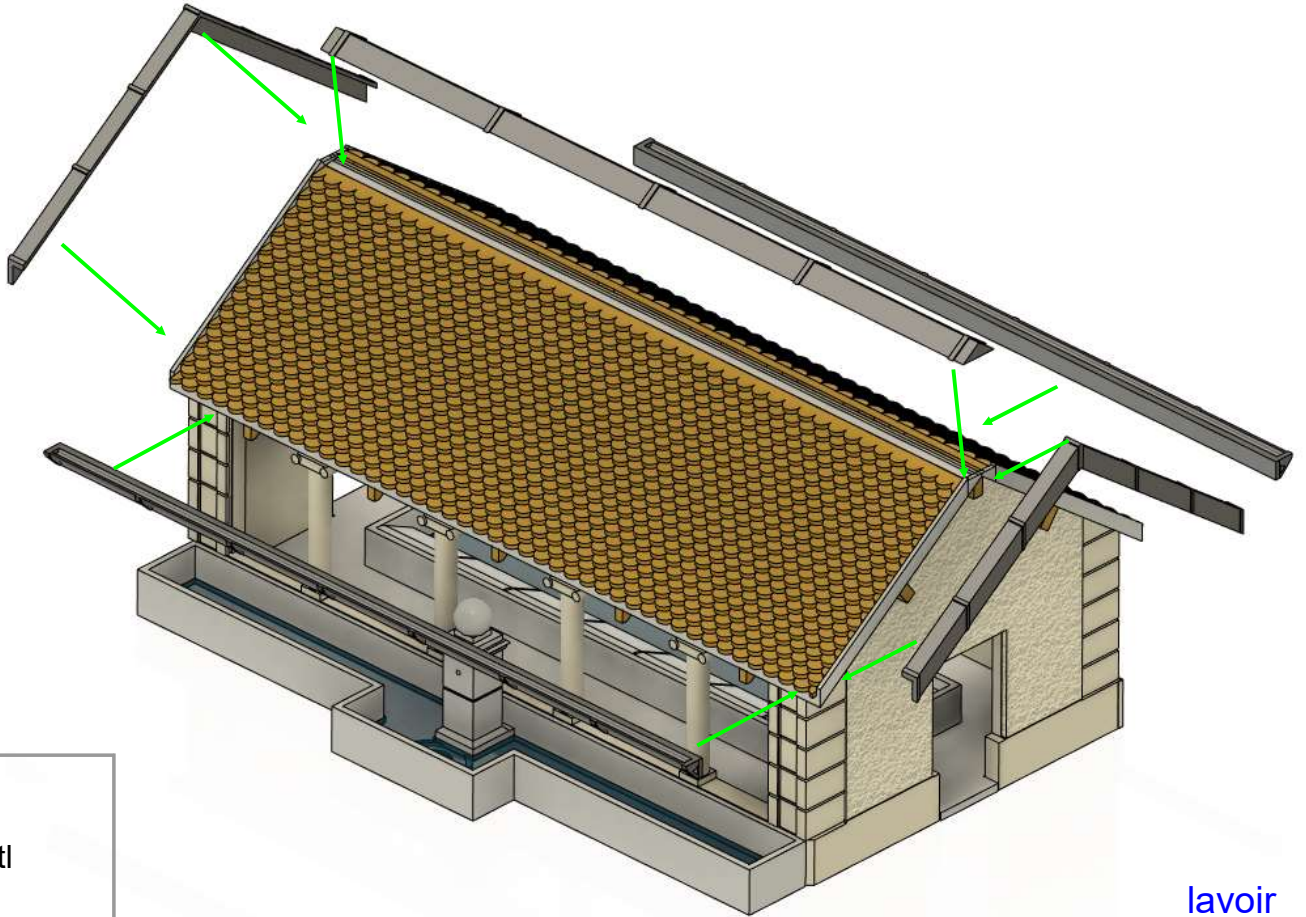
10



demitoit
murs

lavoir

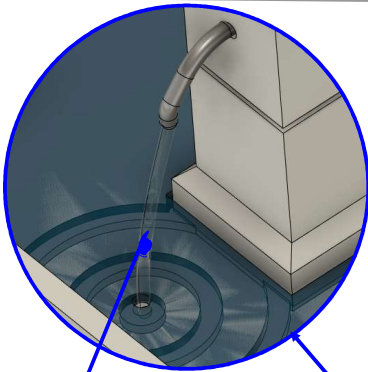
11



demitoit
faitiere.stl
cheneau.stl
rive.stl

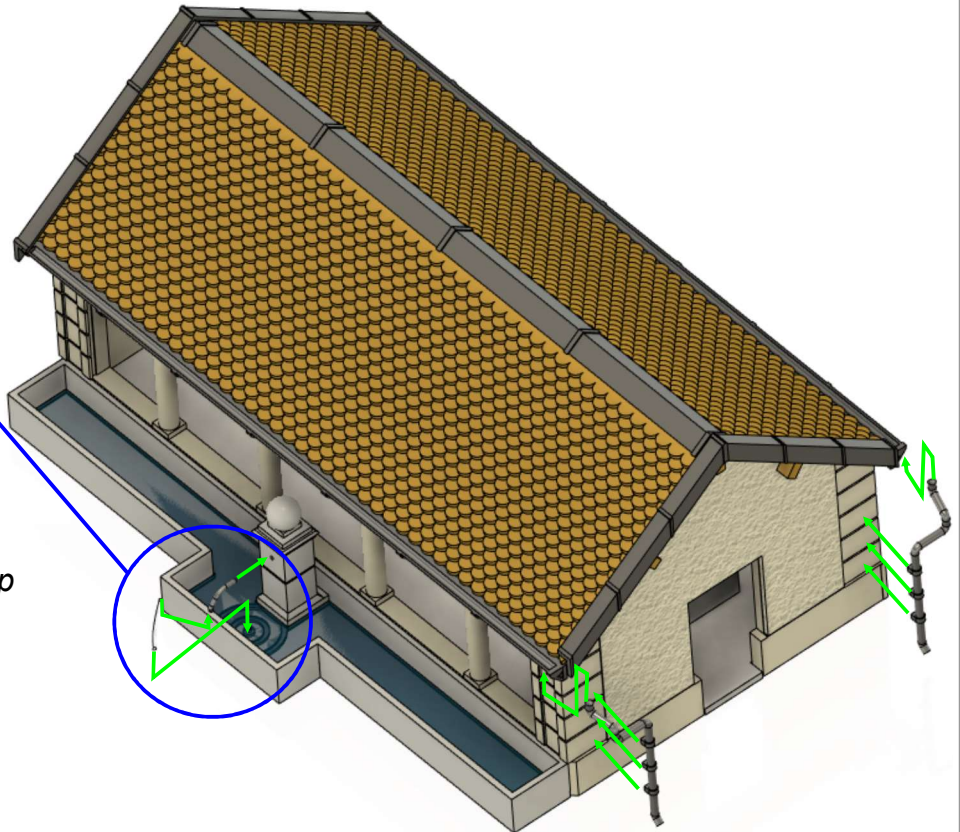
lavoir

12



Former le robinet dans une morceau
de trombone
La chute d'eau est simulée avec une
extrusion de filament translucide buse
0.4 mm.

*Form the faucet in a piece of paper clip
The waterfall is simulated with a 0.4
mm nozzle translucent filament
extrusion.*



lavoir
descente.stl
eau.stl