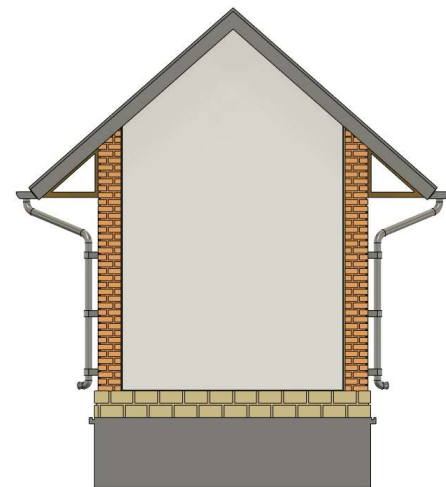


Petite halle à Marchandise



Petite halle à Marchandise



En rouge des aides à l'impression à supprimer
Utiliser un cutter bien aiguisé



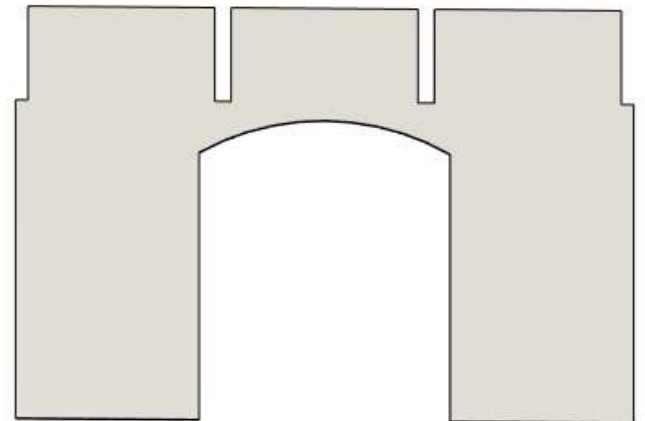
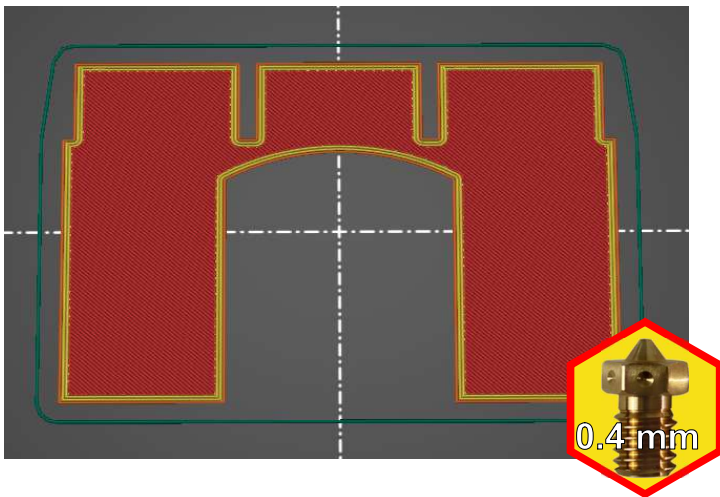
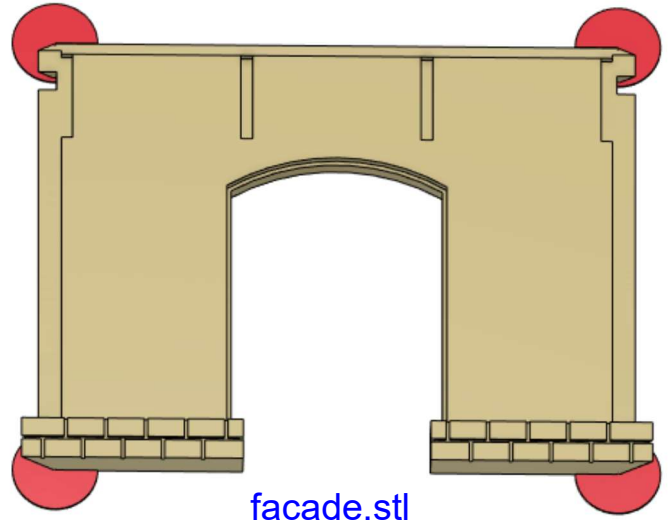
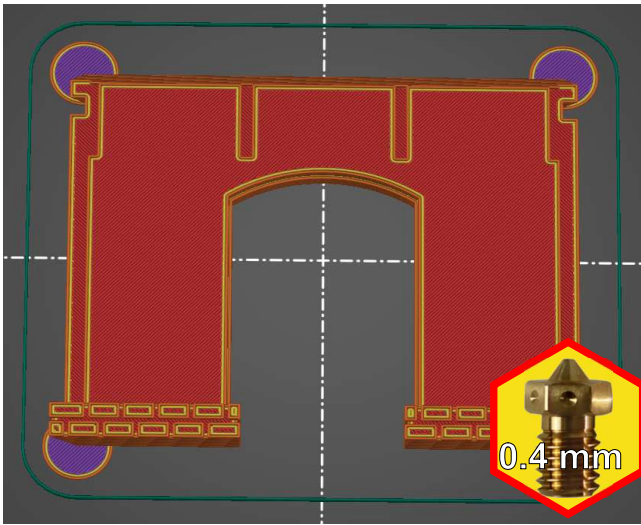
A imprimer avec une buse de 0.25 mm maximum



A imprimer avec une buse de 0.4 mm maximum

Couche 0.2 mm
Remplissage 10 %
sans support
Pla beige

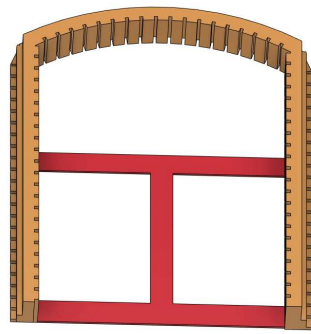
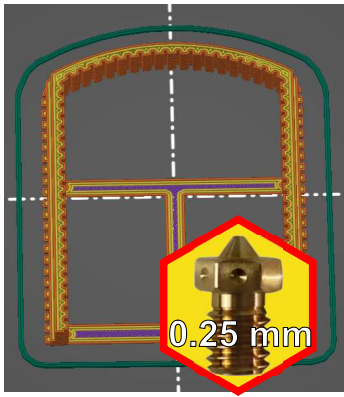
A imprimer 2 fois



Couche 0.05 mm
Remplissage 10 %
sans support
Pla beige

A imprimer sur plateau texturé ou à remplacer par du papier de verre très fin
A imprimer 2 fois

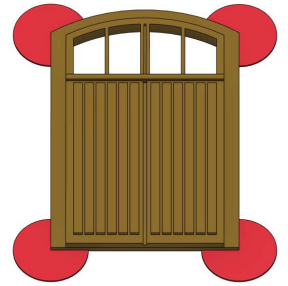
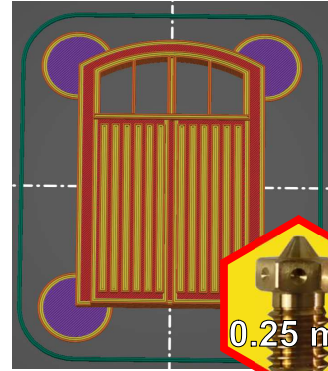
Petite halle à Marchandise



brique.stl

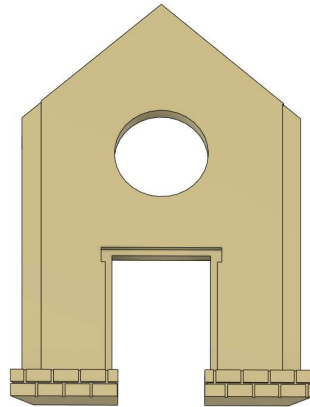
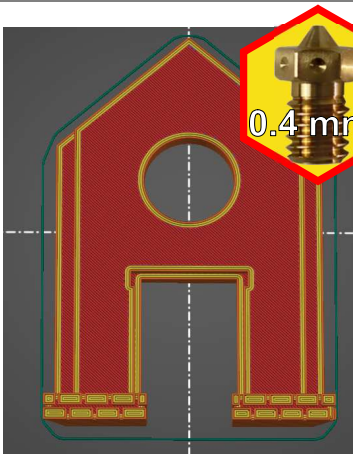
Couche 0.1 mm
Remplissage 10 %
sans support
Pla brique

A imprimer 2 fois



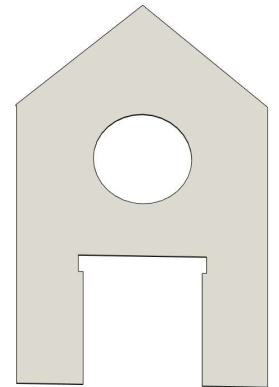
Couche 0.1 mm
Remplissage 10 %
sans support
Pla marron

A imprimer 2 fois



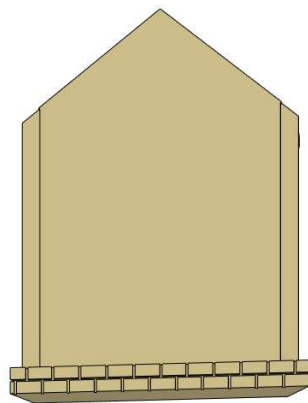
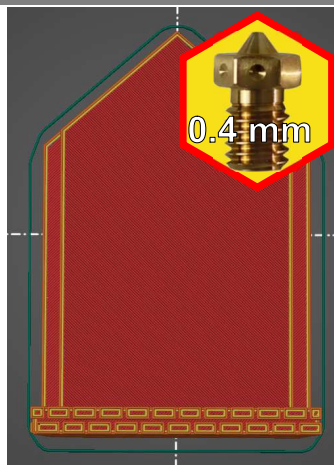
pignon 1.stl

Couche 0.2 mm
Remplissage 10 %
sans support
Pla beige



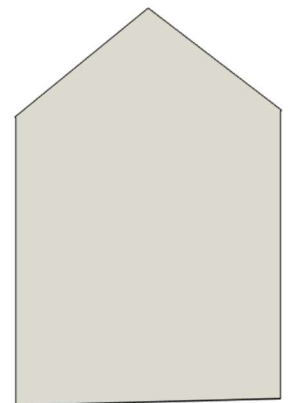
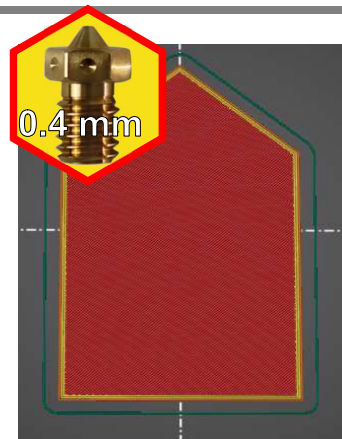
Couche 0.05 mm
Remplissage 10 %
sans support
Pla beige

crepi pignon 1.stl



pignon 2.stl

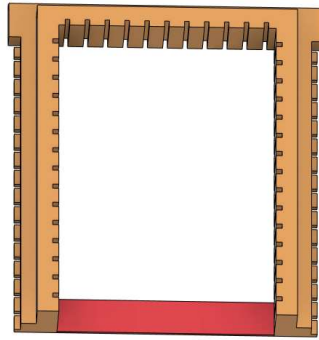
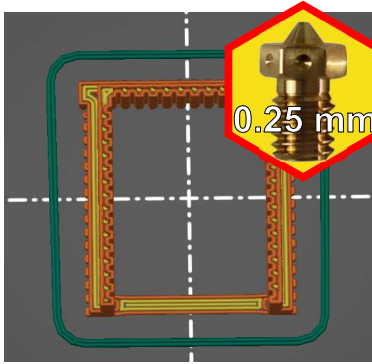
Couche 0.2 mm
Remplissage 10 %
sans support
Pla beige



Couche 0.05 mm
Remplissage 10 %
sans support
Pla beige

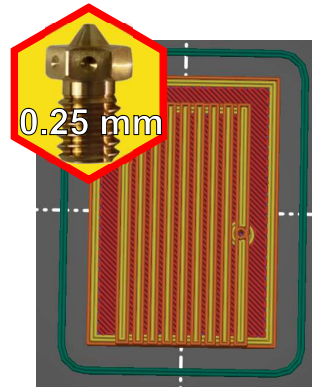
crepi pignon 2.stl

Petite halle à Marchandise



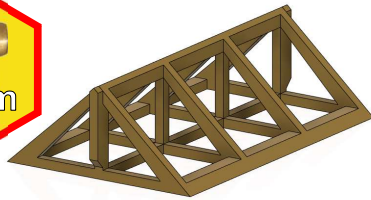
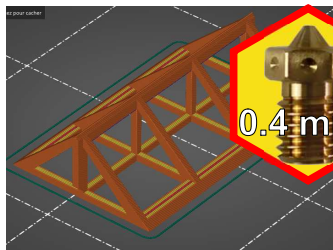
Couche 0.1 mm
Remplissage 10 %
sans support
Pla brique

[tourporte.stl](#)



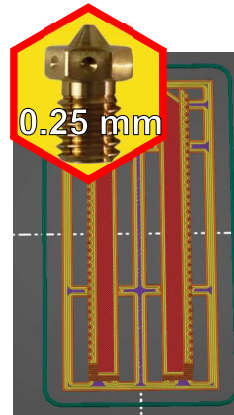
Couche 0.1 mm
Remplissage 10 %
sans support
Pla marron

[porte pignon.stl](#)

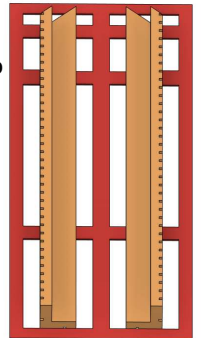


Couche 0.2 mm
Remplissage 10 %
sans support
Pla marron

[charpente.stl](#)



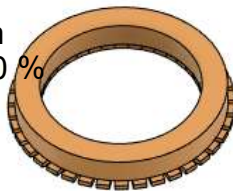
Couche 0.1 mm
Remplissage 10 %
sans support
Pla brique



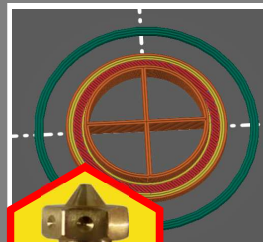
[angles.stl](#)



Couche 0.1 mm
Remplissage 10 %
sans support
Pla brique



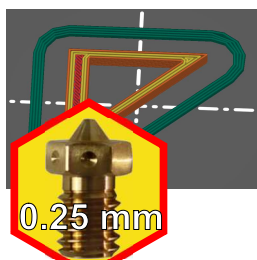
[oeildeboeuf.stl](#)



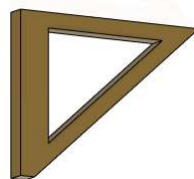
Couche 0.1 mm
Remplissage 10 %
sans support
Pla noir



[grille.stl](#)

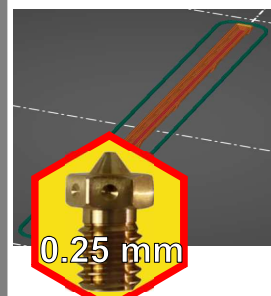


Couche 0.1 mm
Remplissage 10 %
sans support
Pla marron



[appuiroit.stl](#)

A imprimer 8 fois



Couche 0.1 mm
Remplissage 10 %
sans support
Pla argent



A imprimer 2 fois

[cheneau.stl](#)

Petite halle à Marchandise



0.25 mm

Couche 0.1 mm
Remplissage 10 %
sans support
Pla argent

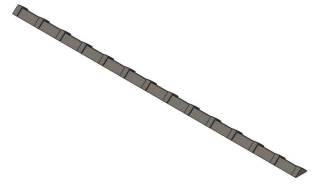


descente avant.stl
descente arriere.stl

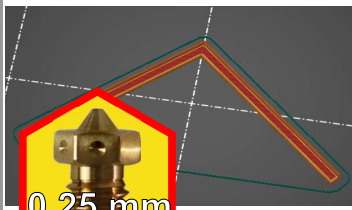


0.25 mm

Couche 0.1 mm
Remplissage 10 %
sans support
Pla argent



faitiere.stl

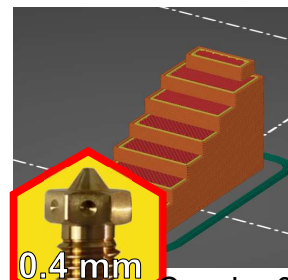


0.25 mm

Couche 0.1 mm
Remplissage 10 %
sans support
Pla argent

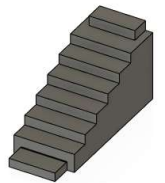


rive.stl

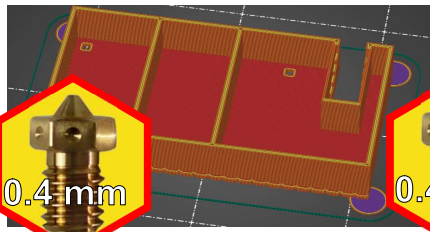


0.4 mm

Couche 0.1 mm
Remplissage 10 %
sans support
Pla gris ciment



escalier.stl

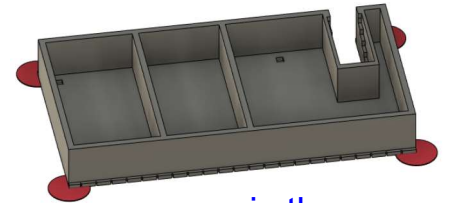


0.4 mm

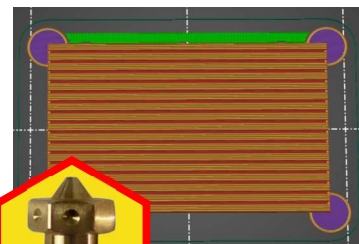


0.4 mm

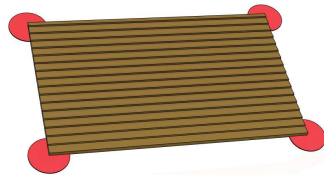
Couche 0.2 mm
Remplissage 10 %
sans support
Pla gris foncé



quai.stl



0.4 mm



toit.stl

Couche 0.1 mm
Remplissage 10 %
support plateau
Pla marron

A imprimer 2 fois

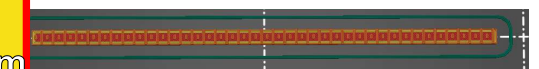


tuile.stl

32 fois



0.25 mm

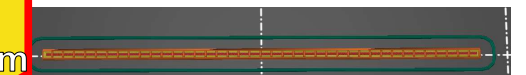


tuile haut.stl

2 fois



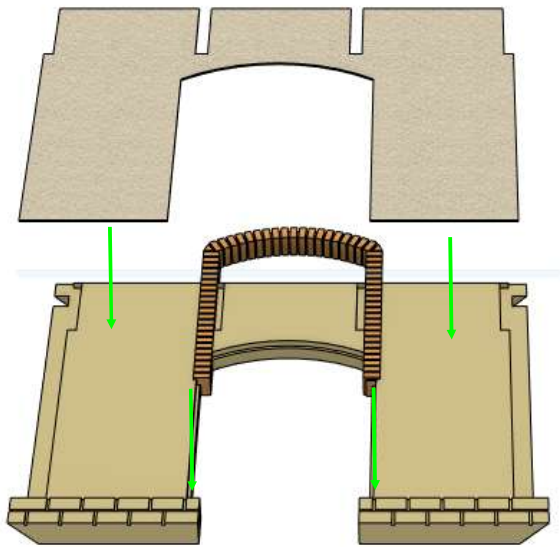
0.25 mm



Couche 0.1 mm
Remplissage 10 %
support plateau
Pla tuile

Petite halle à Marchandise

1

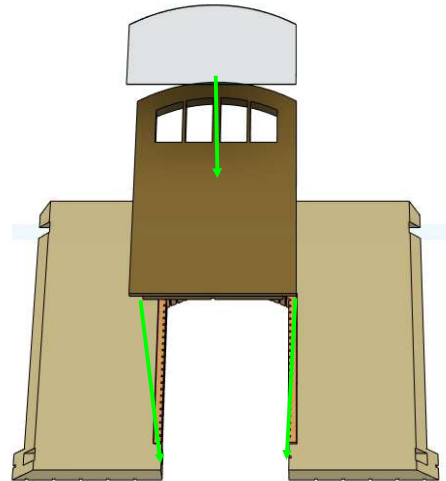


Crepi facade.stl
facade.stl
brique.stl

2 fois : facade et arriere

2

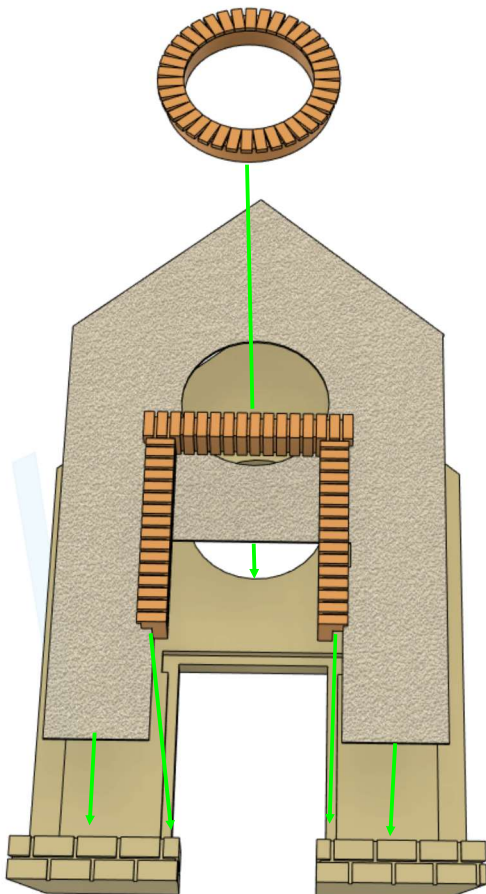
A découper dans du transparent



facade et arriere
porte.stl

facade et arriere

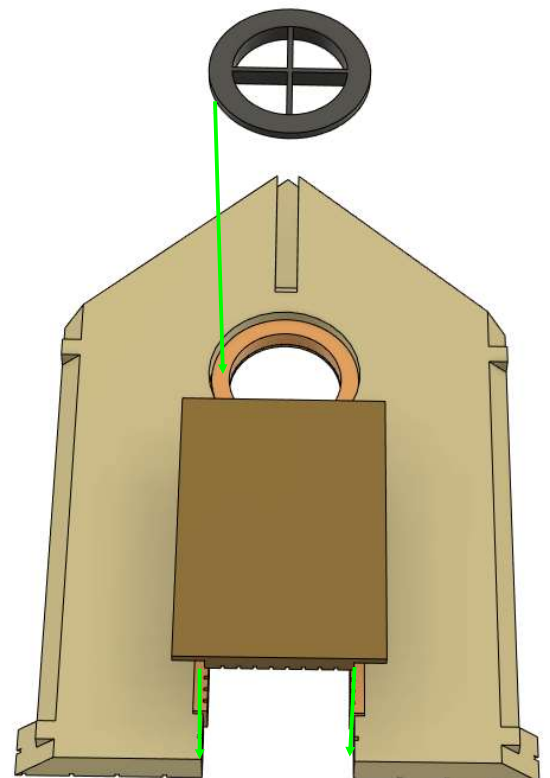
3



crepi pignon 1.stl
pignon 1.stl
oeildeboeuf .stl
tourporte.stl

pignon 1

4

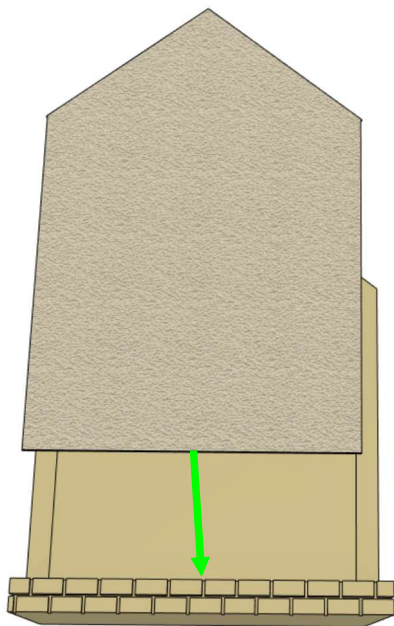


grille .stl
porte pignon.stl

pignon 1

Petite halle à Marchandise

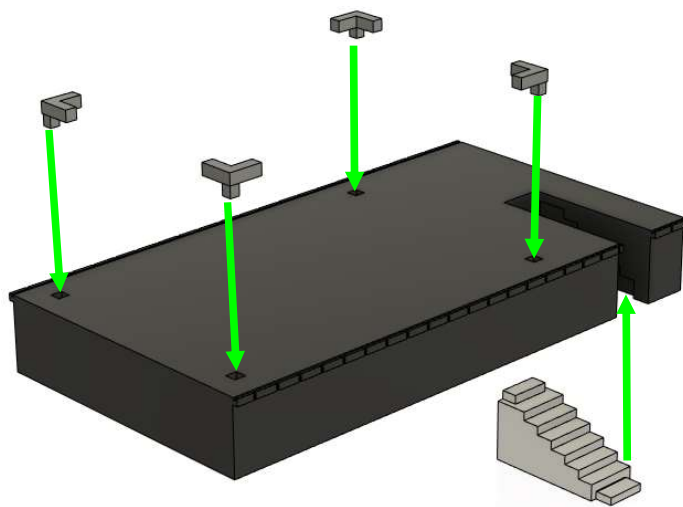
5



crepi pignon 2.stl
pignon 2.stl

pignon 2

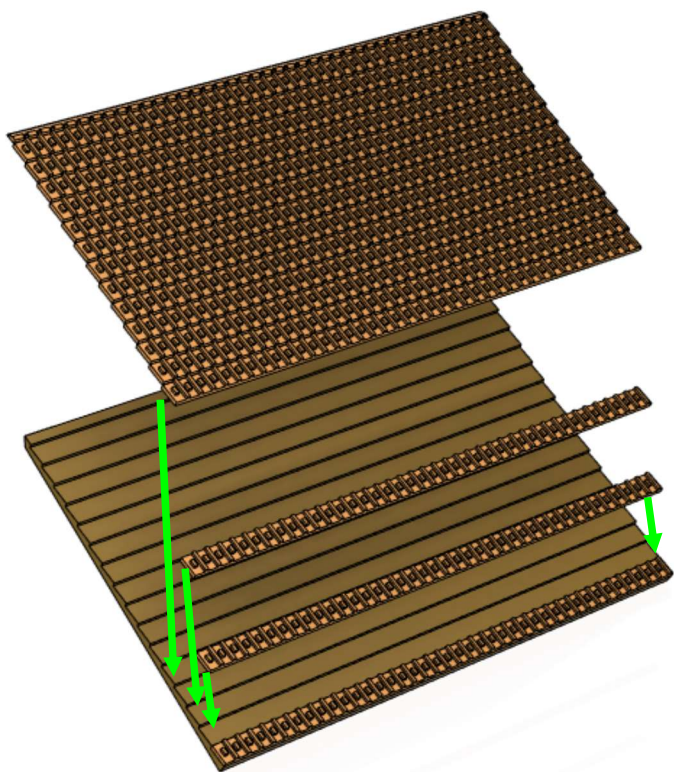
6



quai.stl
cale.stl
escalier.stl

quai

6

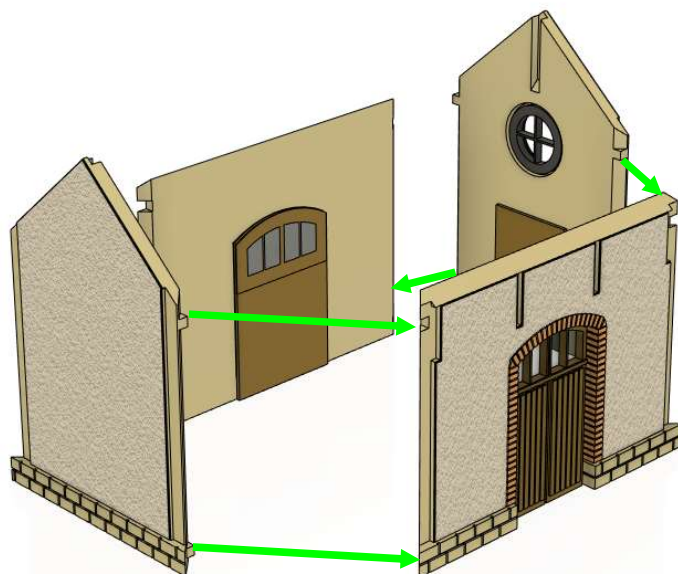


toit.stl
tuile.stl
tuile haut.stl

2 fois

toit

7

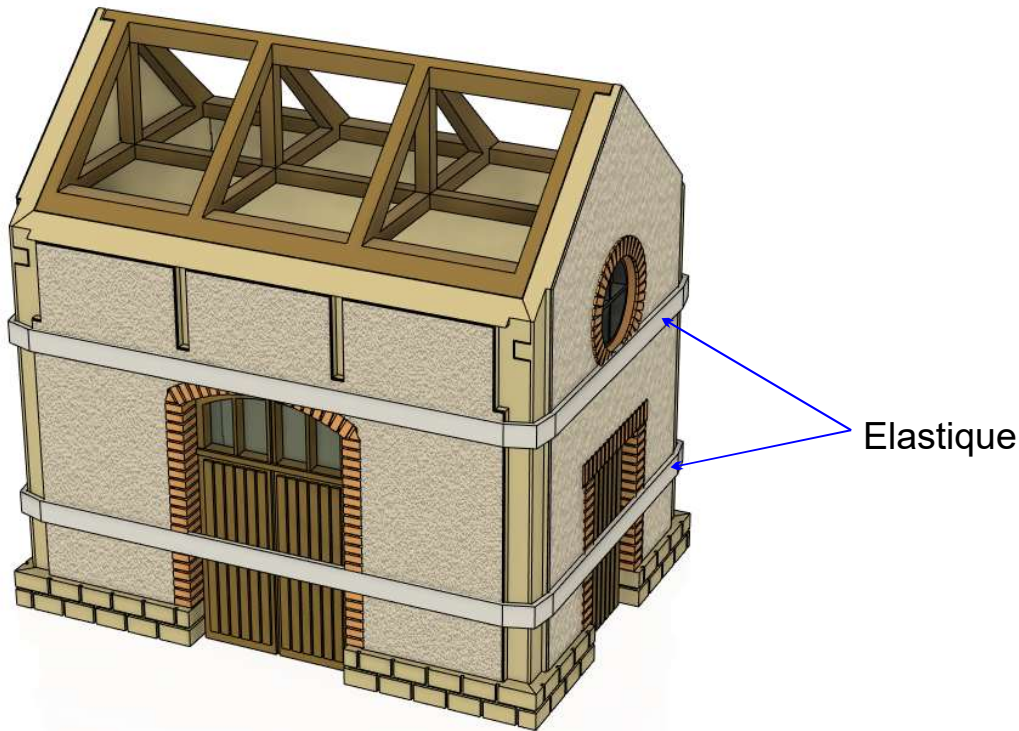


pignon 1
pignon 2
facade

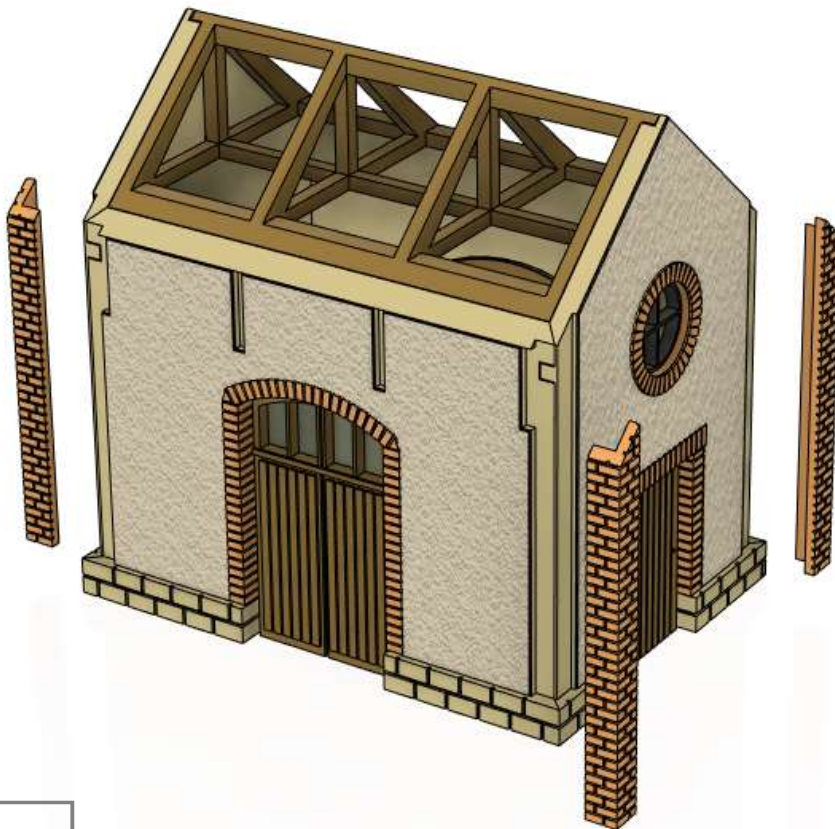
petite halle

Petite halle à Marchandise

8



9

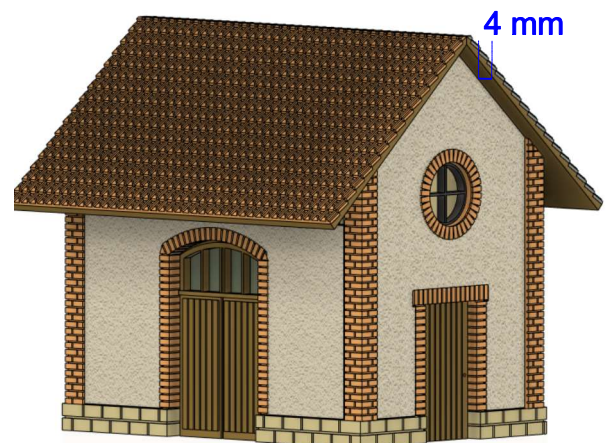
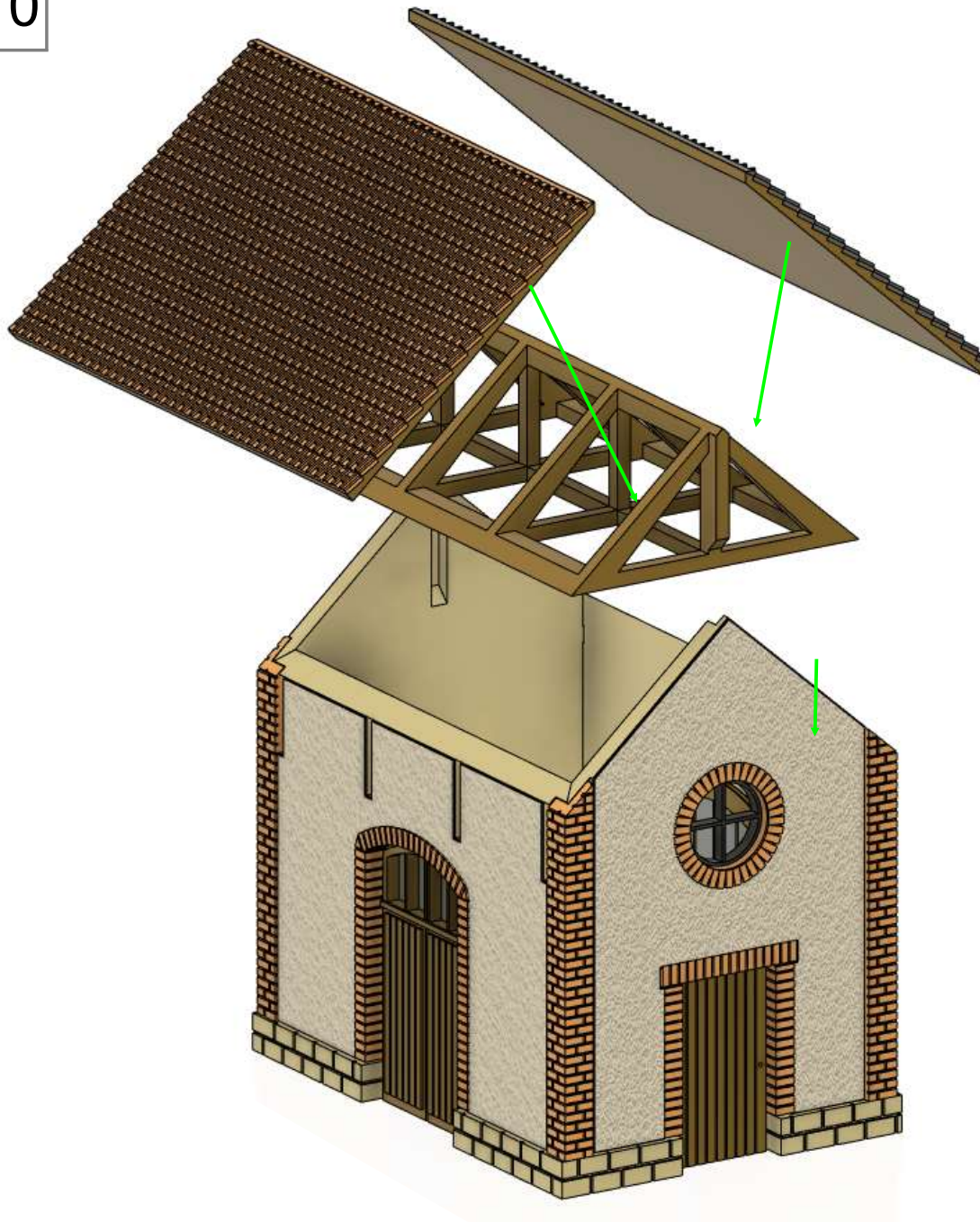


petite halle
angles.stl

petite halle

Petite halle à Marchandise

10

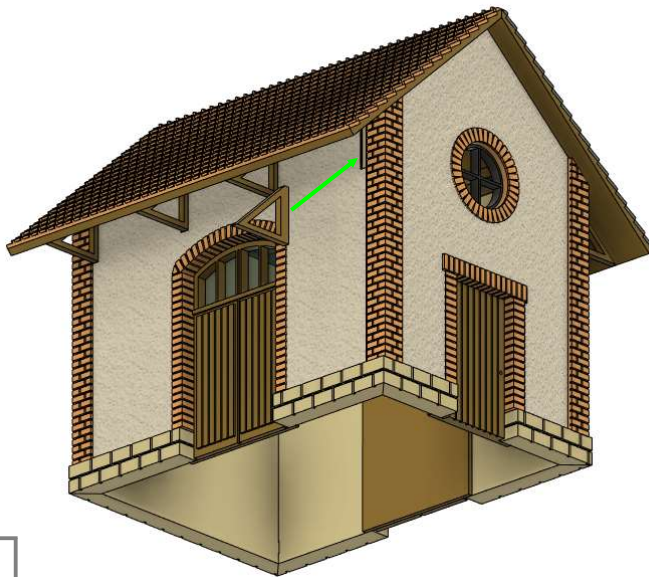


petite halle
charpente.stl
toit

petite halle

Petite halle à Marchandise

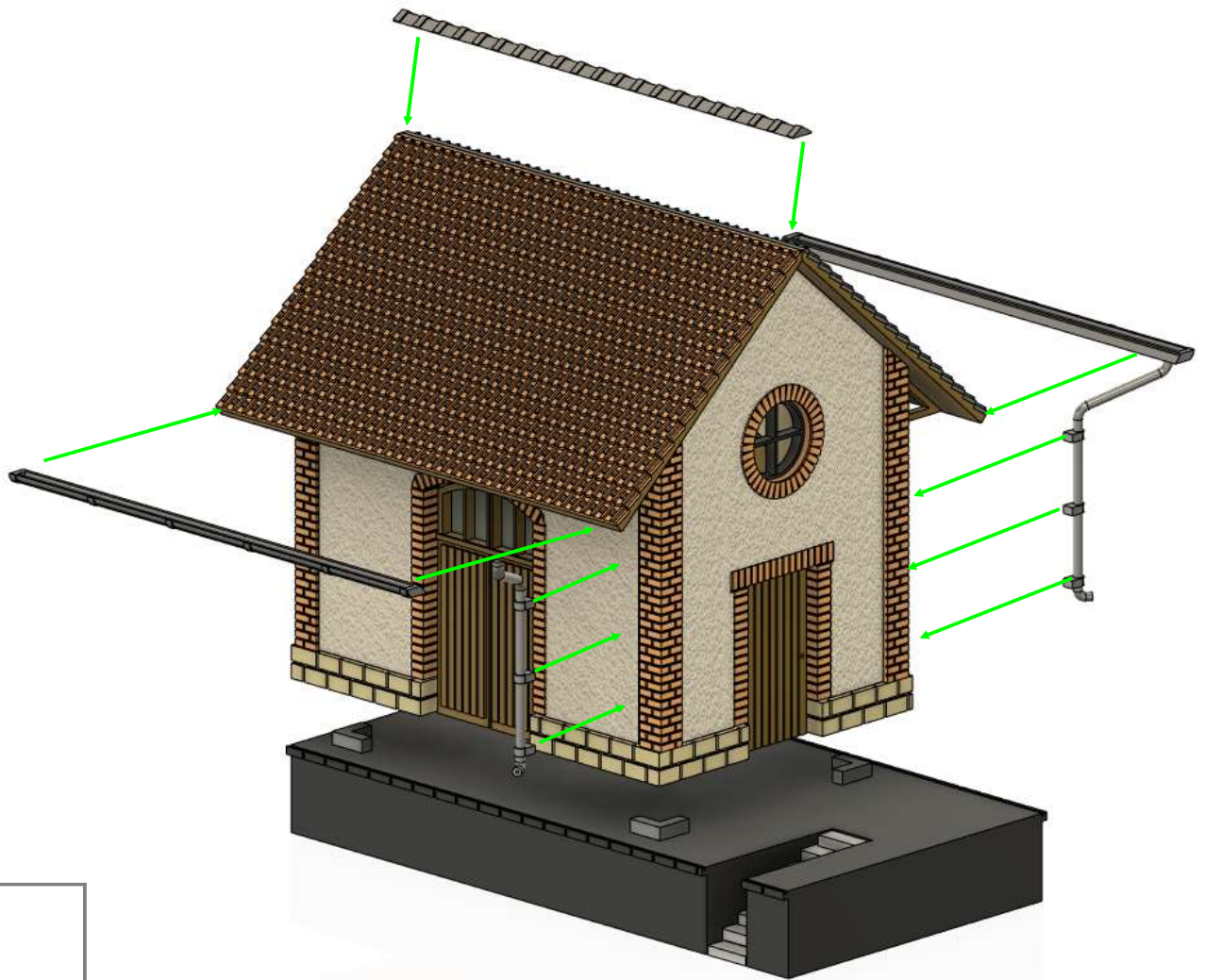
11



petite halle
support toit.stl

petite halle

12



petite halle
cheneau.stl
descente.stl
faitiere.stl