

# Citroën Type H long



# Citroën Type H long



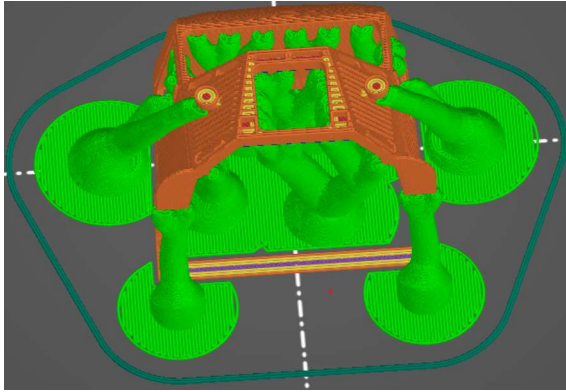
En rouge des aides à l'impression à supprimer  
Utiliser un cutter bien aiguisé



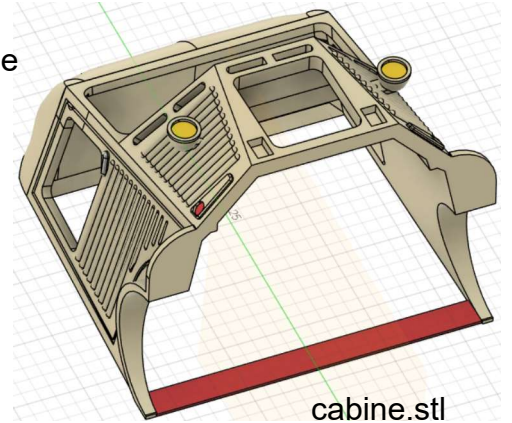
A imprimer avec une buse de 0.25 mm maximum



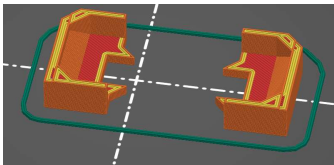
A imprimer avec une buse de 0.25 mm maximum



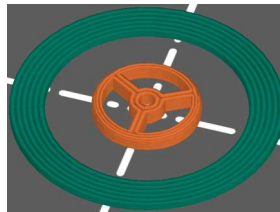
Couche 0.05 mm support partout organique remplissage 10 %  
Pla beige



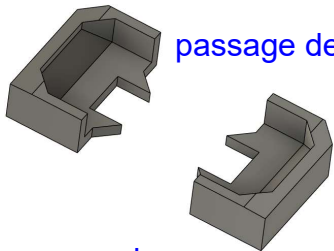
cabine.stl



Couche 0.1 mm sans support remplissage 10 %  
Pla beige



Couche 0.05 mm sans support remplissage 10 %  
Pla noir



passage de roue d



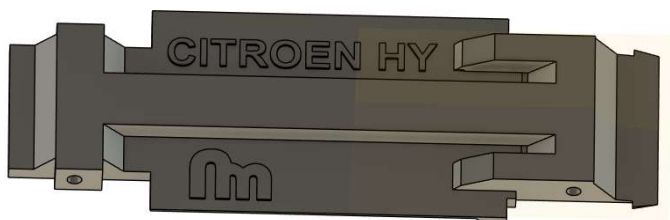
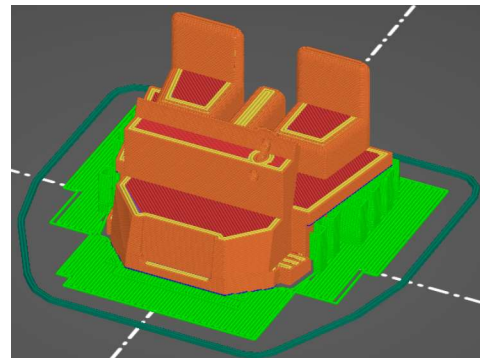
volant.stl

passage de roue g

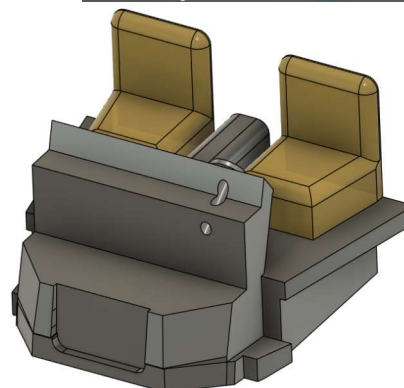
passage de roue.stl



Couche 0.1 mm sans support remplissage 10 %  
Pla noir



chassis bas.stl

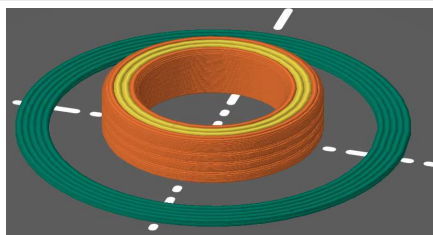


Couche 0.1 mm support plateau grille remplissage 10 %  
Pla noir

chassis haut.stl



# Citroën Type H long

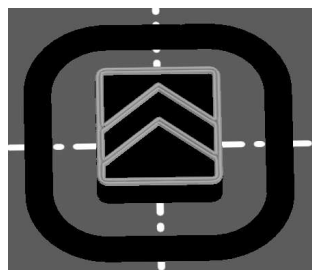


Couche 0.05 mm  
sans support  
remplissage 10 %  
Pla noir



pneu.stl

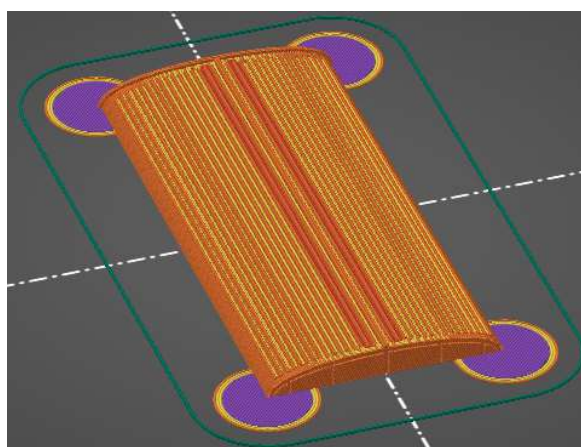
à Imprimer 4x



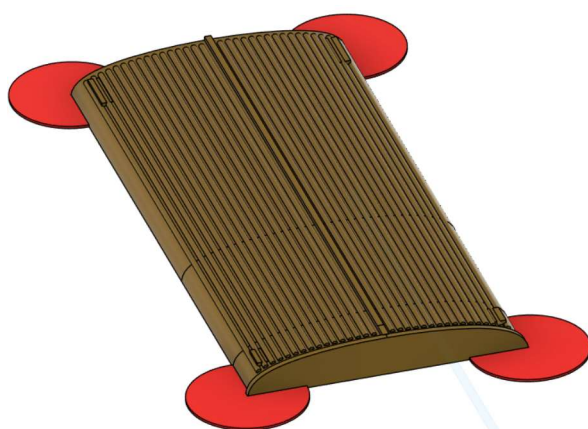
Couche 0.1 mm  
sans support  
remplissage 10 %  
Pla noir < 1.6 mm  
Pla argent >= 1.6 mm



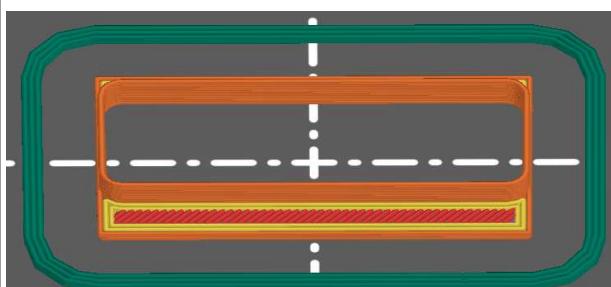
grille.stl



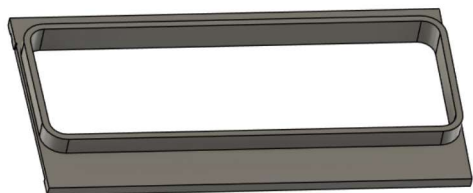
Couche 0.05 mm  
sans support  
remplissage 10 %  
Pla beige



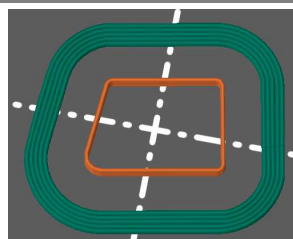
toit.stl



Couche 0.1 mm  
sans support  
remplissage 10 %  
Pla argent



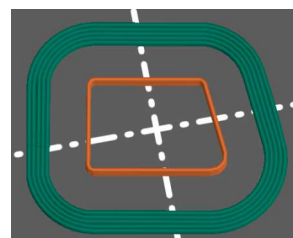
parebrise.stl



Couche 0.1 mm  
sans support  
remplissage 10 %  
Pla argent



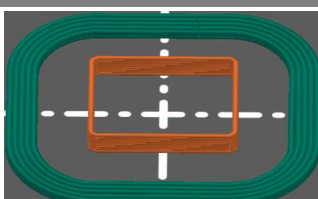
fenetre d.stl



Couche 0.1 mm  
sans support  
remplissage 10 %  
Pla argent



fenetre g.stl

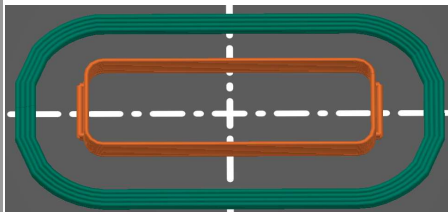


Couche 0.1 mm  
sans support  
remplissage 10 %  
Pla argent



fenetre ar.stl

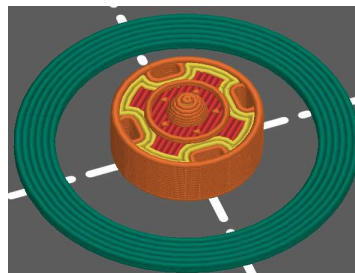
# Citroën Type H long



Couche 0.1 mm  
sans support  
remplissage 10 %  
Pla argent



vitre paroi.stl

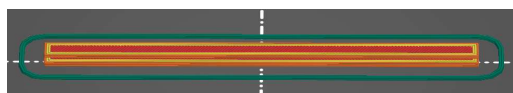


Couche 0.1 mm  
sans support  
remplissage 10 %  
Pla argent

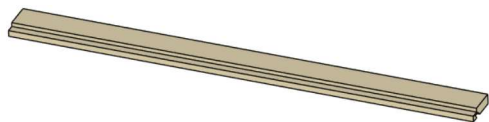


moyeu.stl

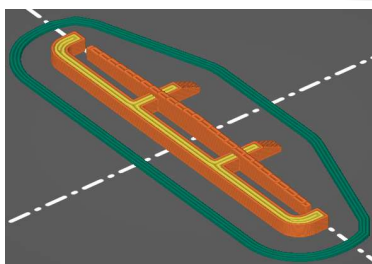
à Imprimer 4x



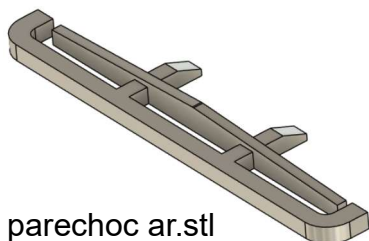
Couche 0.1 mm  
sans support  
remplissage 10 %  
Pla beige



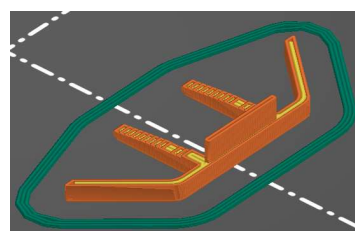
tablette basse.stl



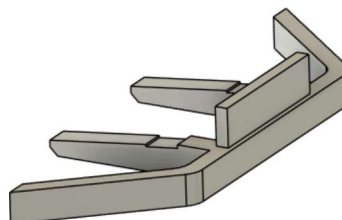
Couche 0.1 mm  
sans support  
remplissage 10 %  
Pla argent



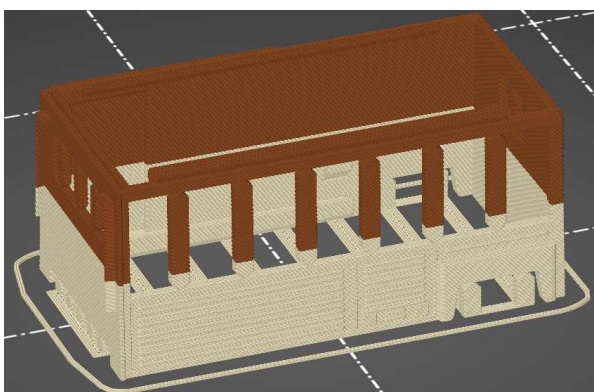
parechoc ar.stl



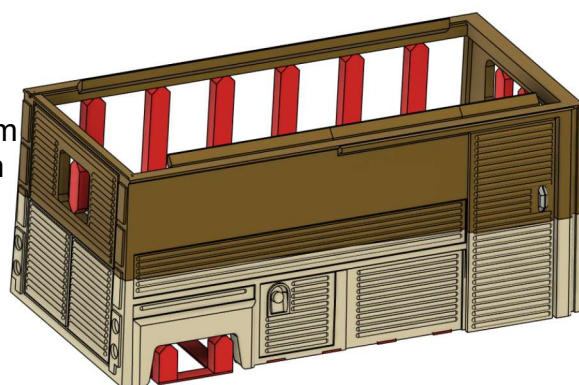
Couche 0.1 mm  
sans support  
remplissage 10 %  
Pla argent



parechoc av.stl



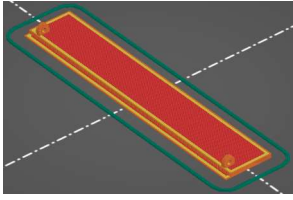
Couche 0.1 mm  
sans support  
remplissage 10 %  
Pla beige  $\leq$  11.1 mm  
Pla marron  $>$  11 mm



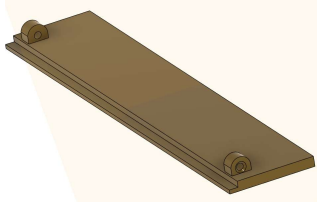
carrosserie → ar.stl



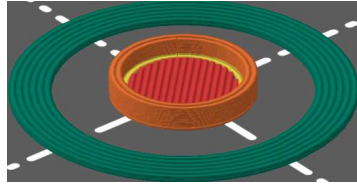
# Citroën Type H long



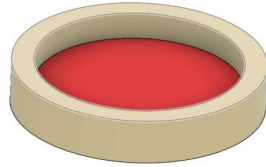
Couche 0.1mm  
sans support  
remplissage 10 %  
Pla marron



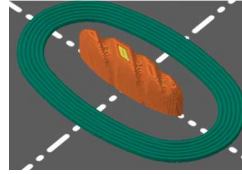
tablette haute.stl



Couche 0.1mm  
sans support  
remplissage 10 %  
Pla blanc



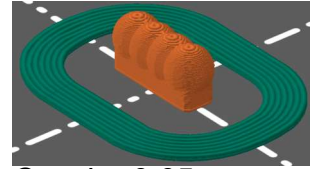
tarte.stl



Couche 0.1mm  
sans support  
remplissage 10 %  
Pla marron



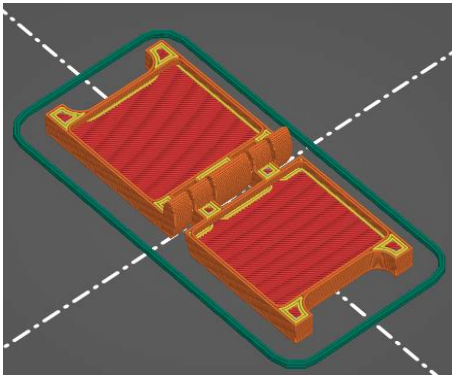
pain.stl



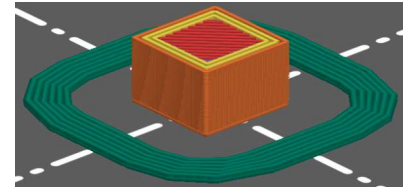
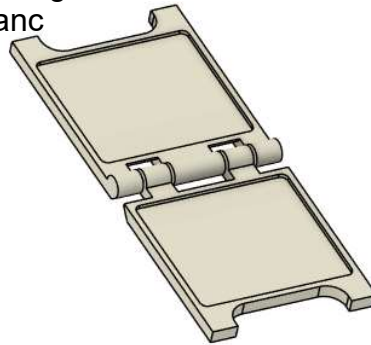
Couche 0.05mm  
sans support  
remplissage 10 %  
Pla blanc



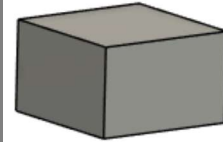
crioche.stl



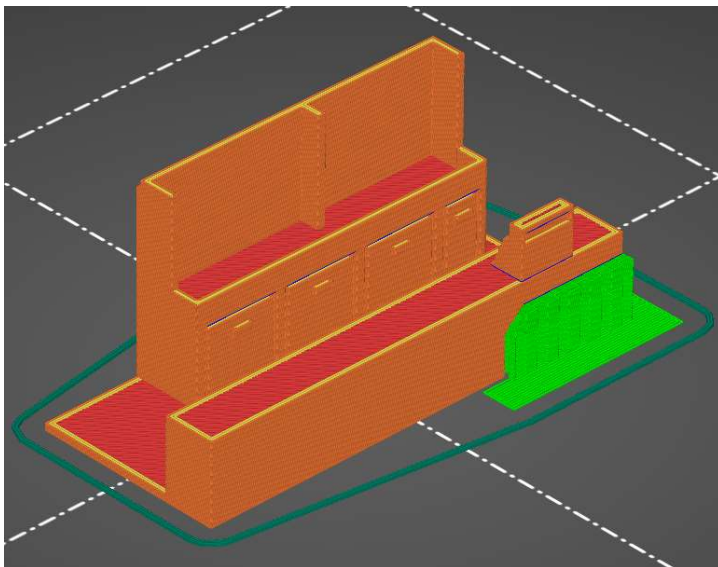
Couche 0.1mm  
sans support  
remplissage 10 %  
Pla blanc



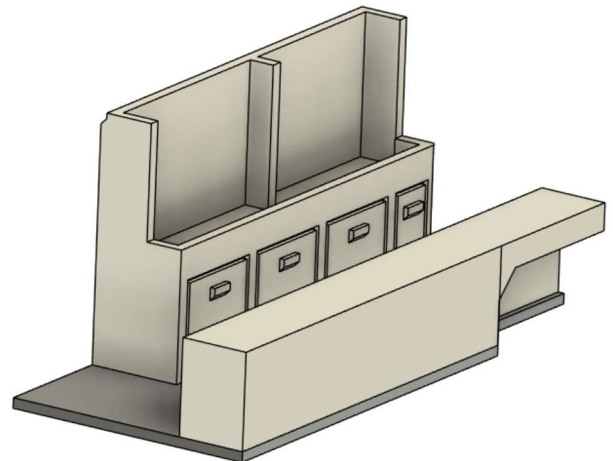
Couche 0.1mm  
sans support  
remplissage 10 %  
Pla noir



clef chassis.stl



Couche 0.1mm  
support grille  
remplissage 10 %  
Pla beige

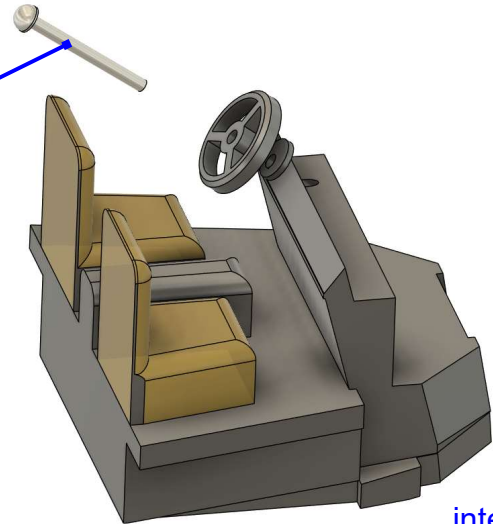


interieur.stl

# Citroën Type H long



épingles coupées à 7 mm

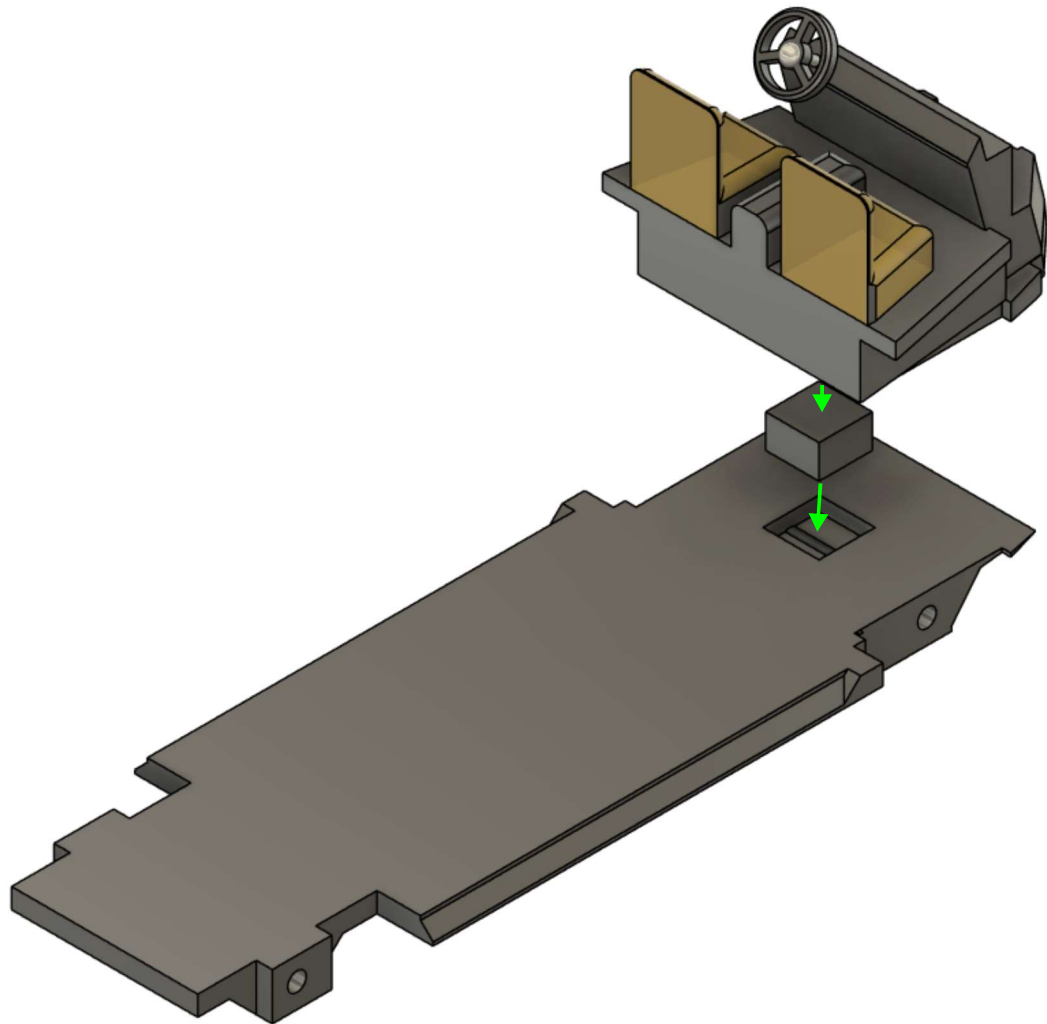


moyeu.stl  
pneu.stl

roue

moyeu.stl  
pneu.stl

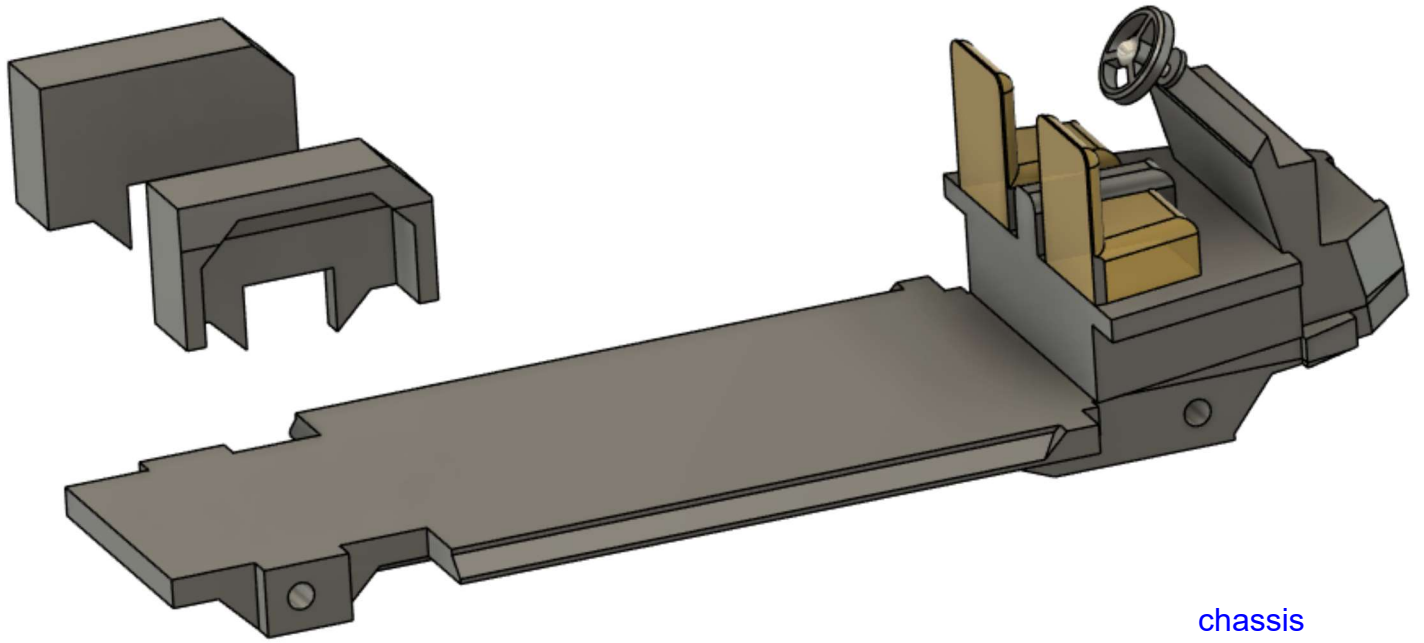
intérieur



intérieur  
chassis bas.stl  
clef chassis.stl

chassis

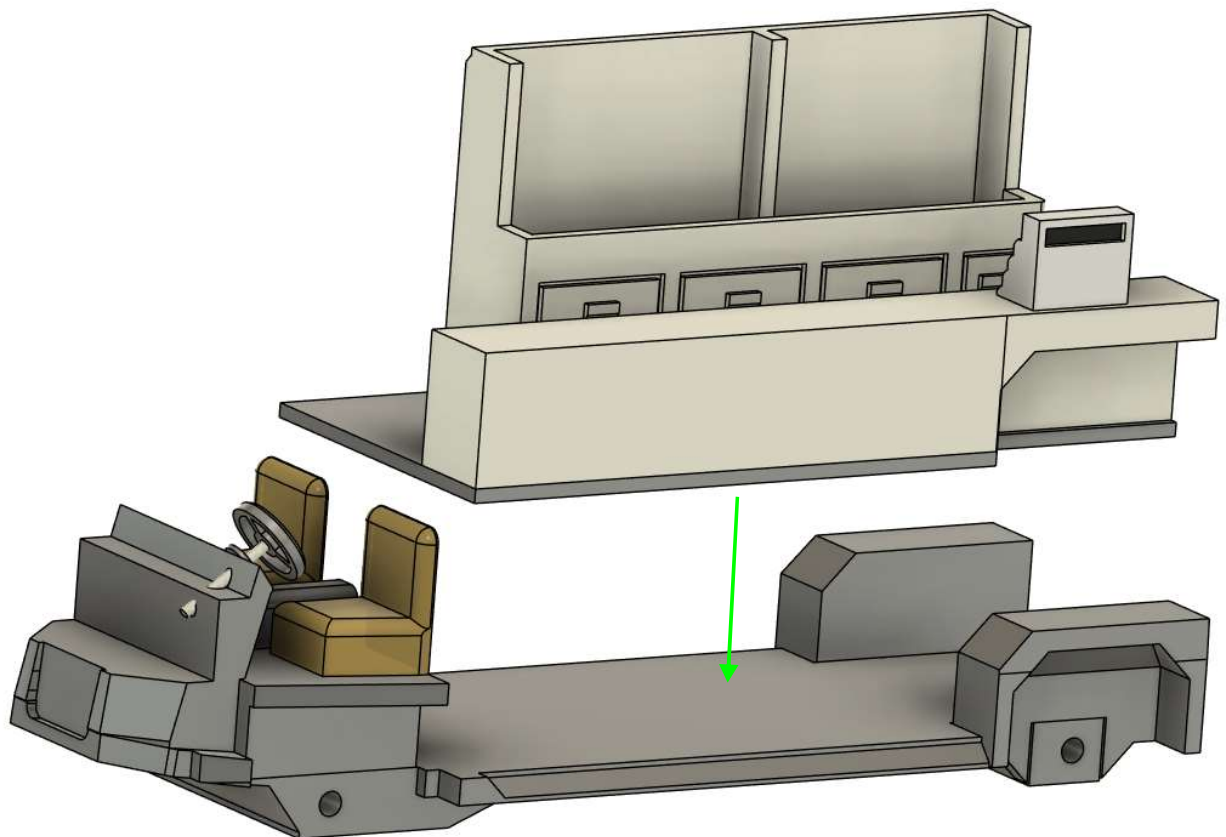
# Citroën Type H long



chassis

chassis

passage de roue g.stl  
passage de roue.stl

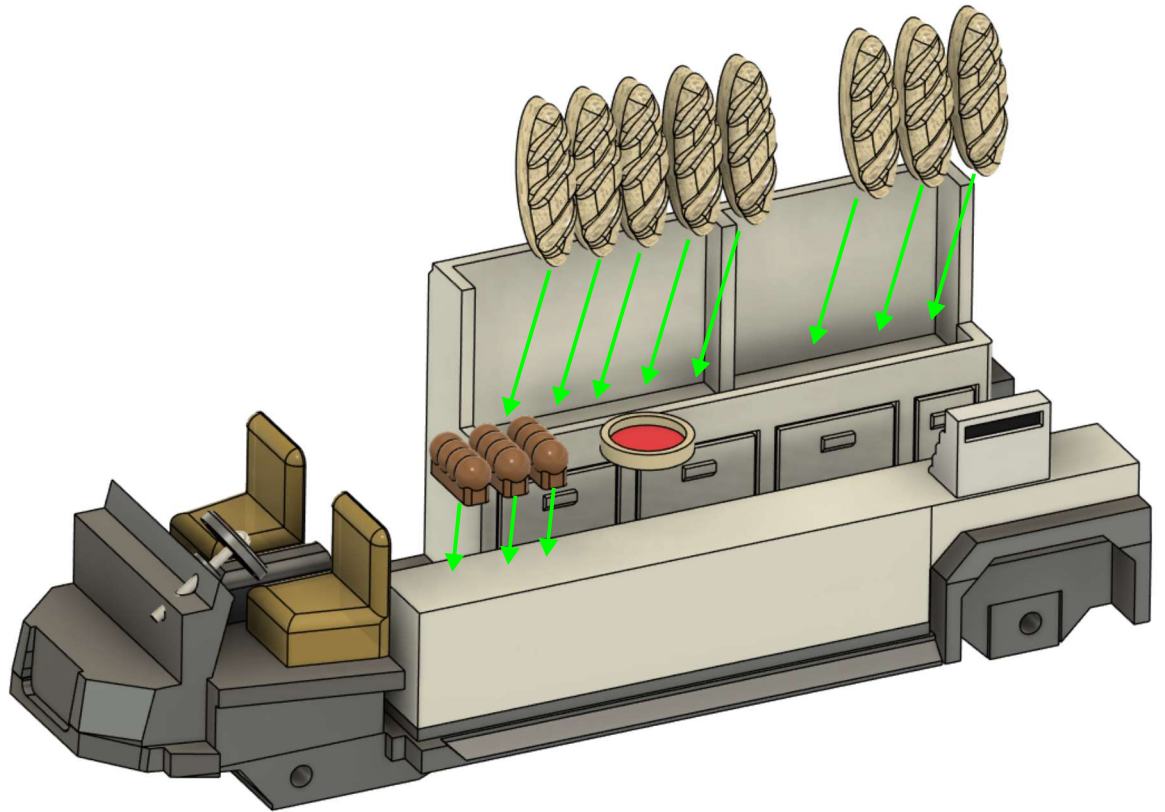


chassis

interieur.stl

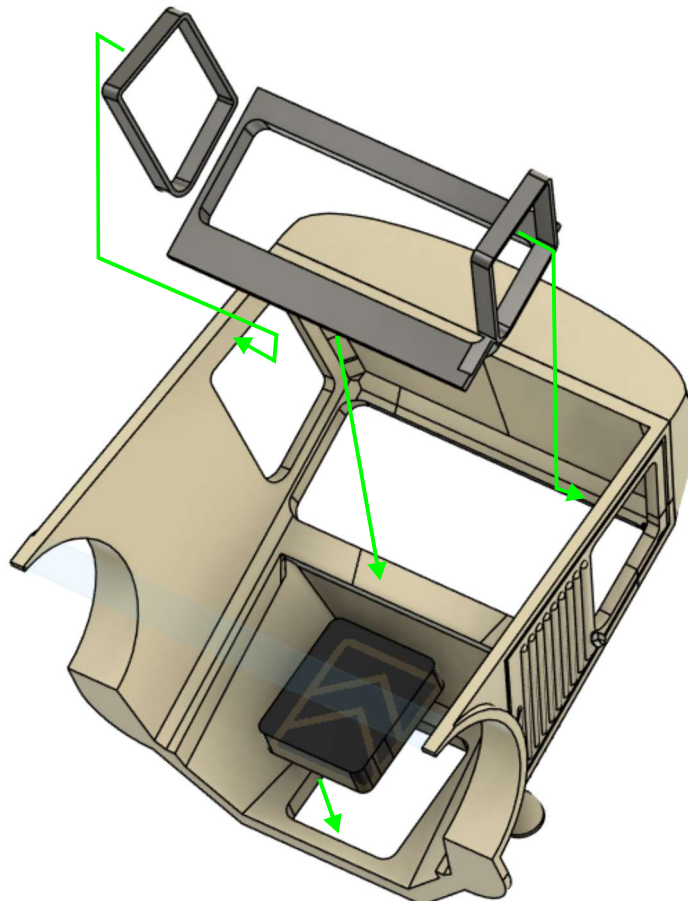
chassis

# Citroën Type H long



chassis  
pain.stl  
brioche.stl  
tarte.stl

chassis

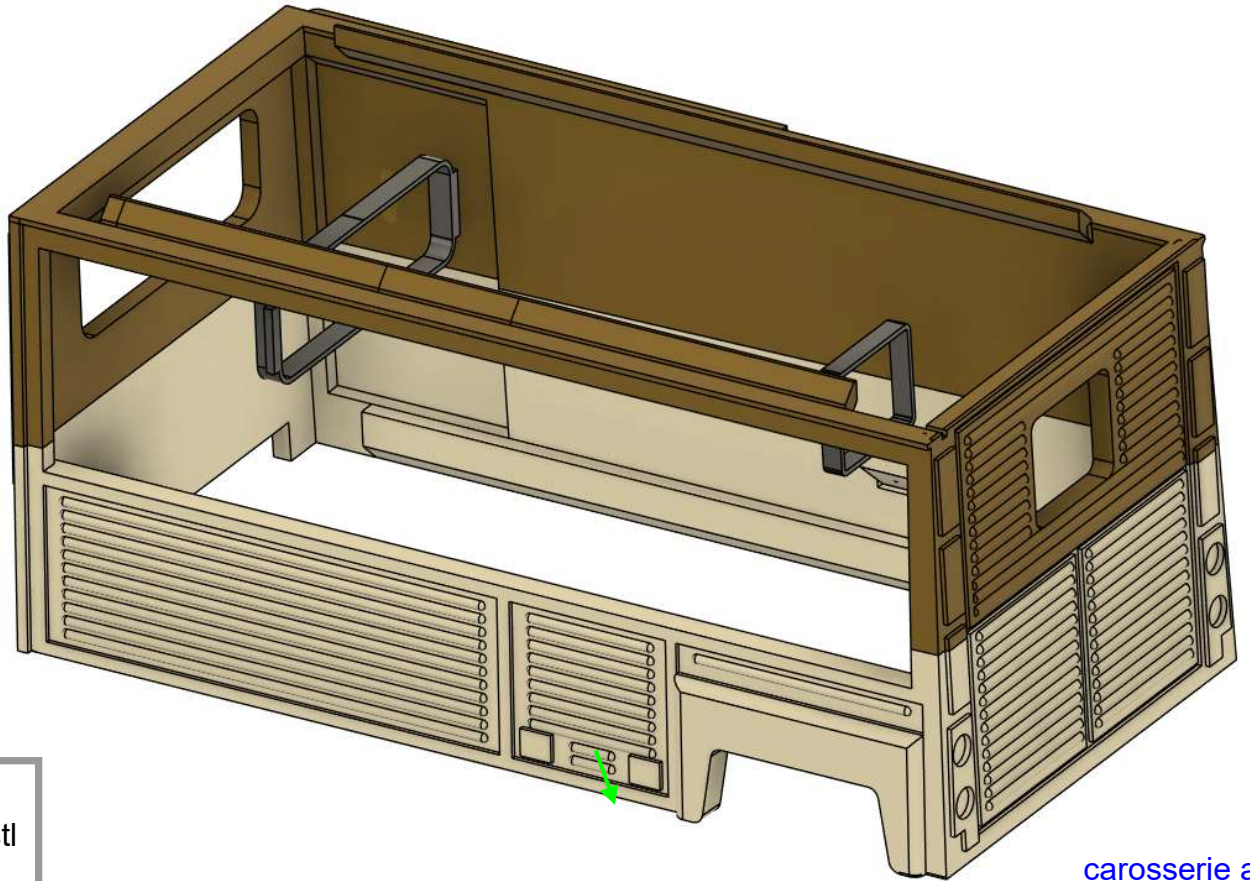


cabine.stl  
grille.stl  
parebrise.stl  
fenetre d.stl

chassis



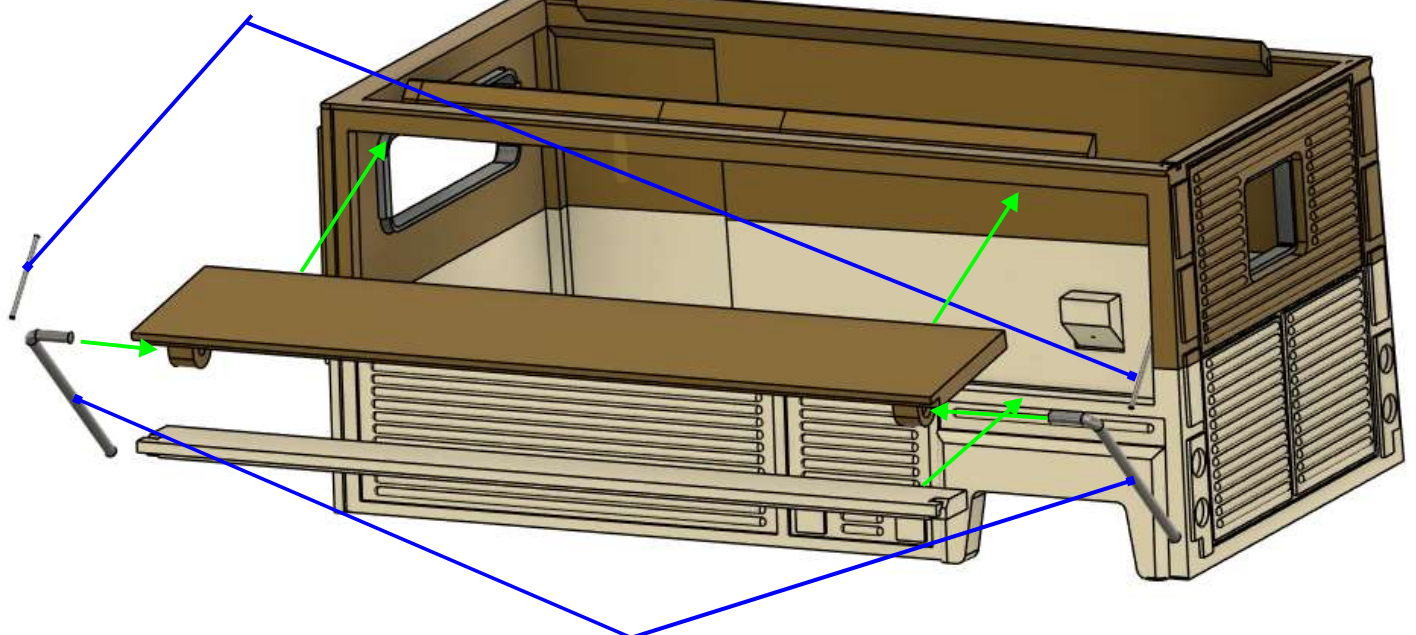
# Citroën Type H long



carrosserie.stl  
fenetre paroi.stl  
fenetre ar.stl

carrosserie ar

fil de fer Ø 0.35 mm

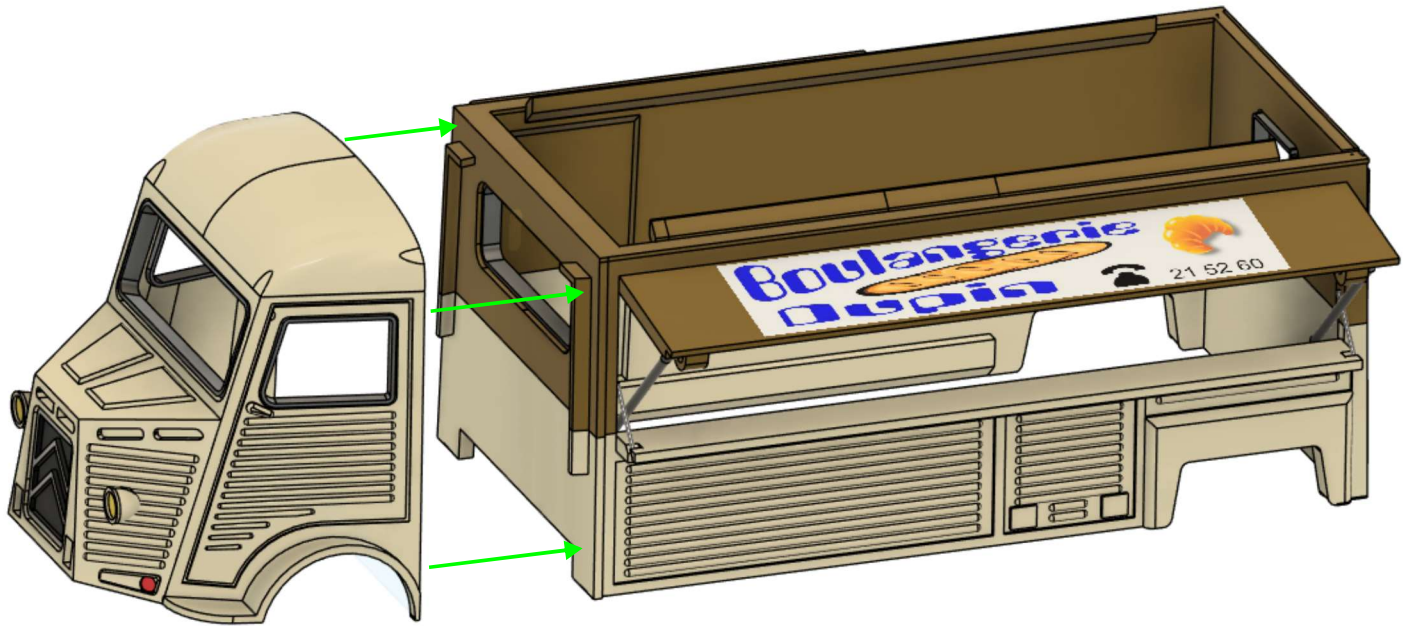


fil de fer Ø 0.7 mm

carrosserie ar  
ftablette haute.stl  
tablette basse.stl

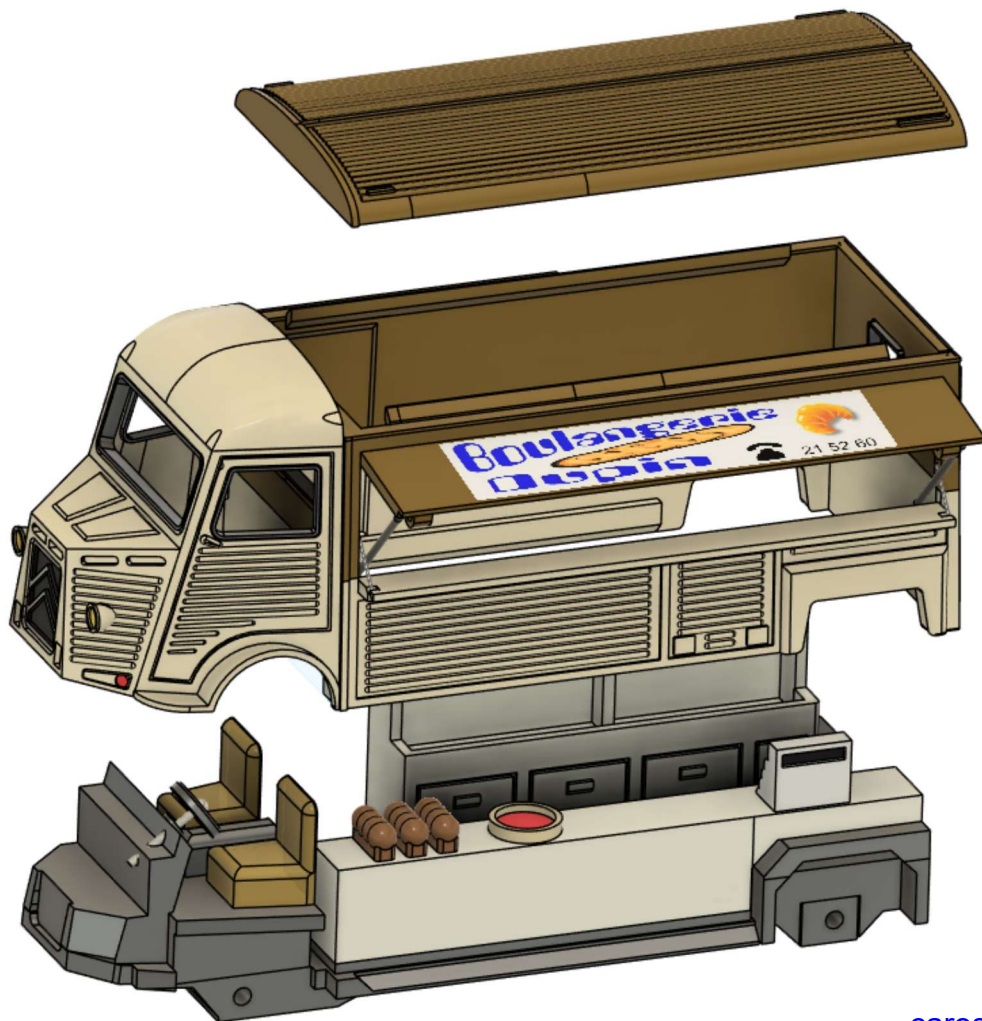
carrosserie ar

# Citroën Type H long



carrosserie ar  
cabine

type H rallonge

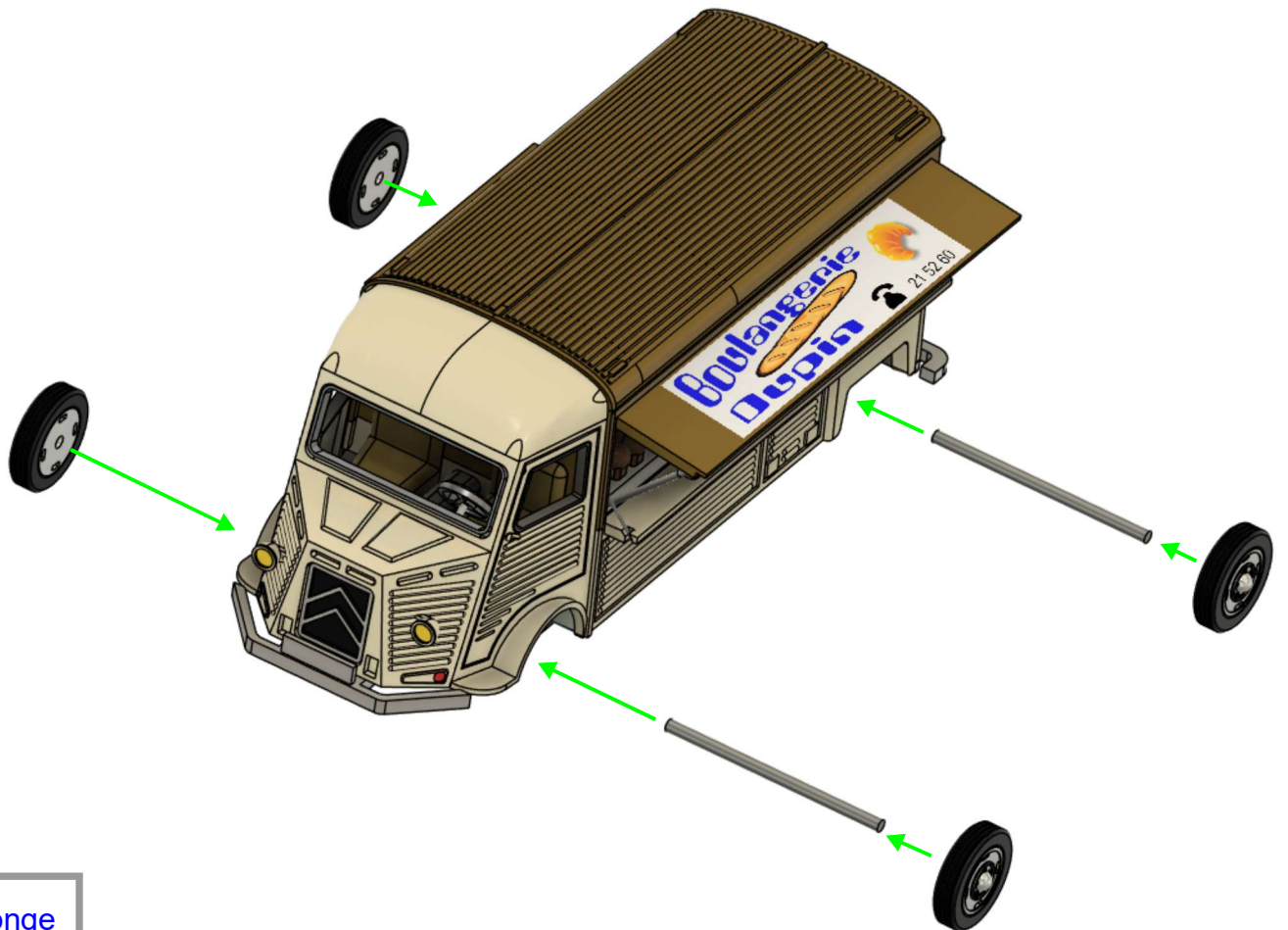
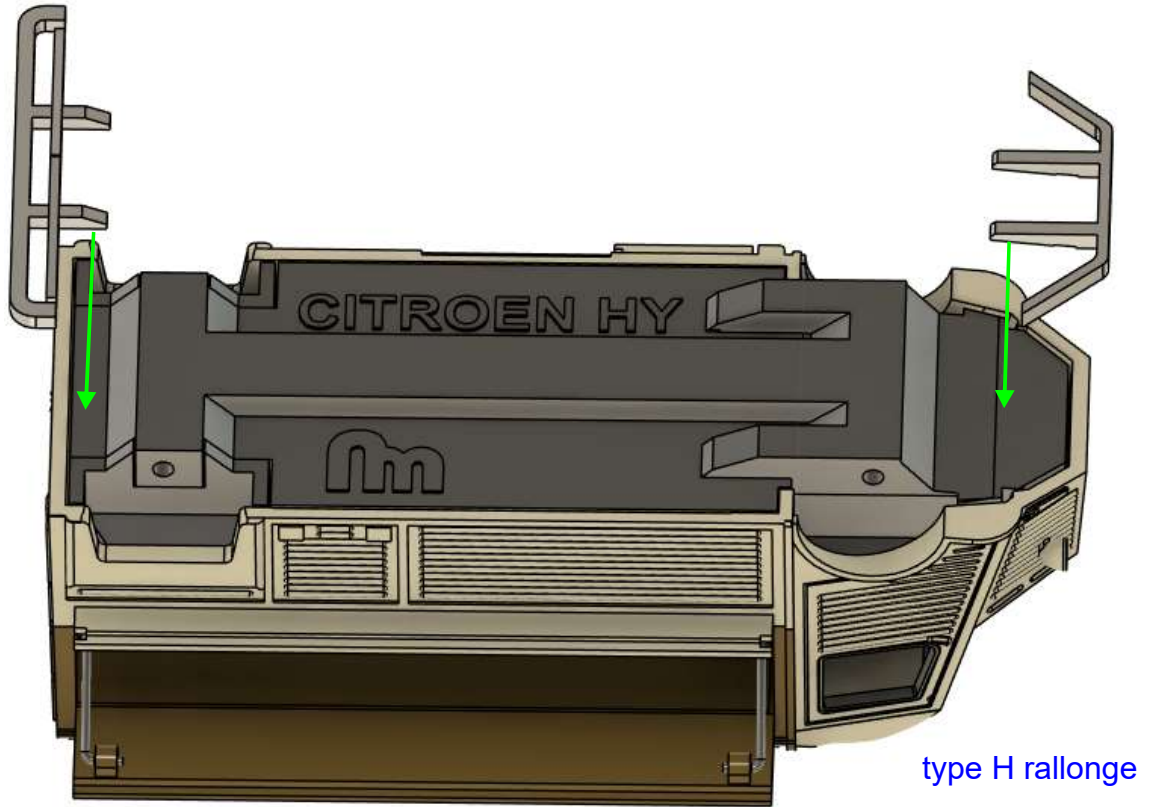


type h rallonge  
chassis  
toit.stl

carrosserie ar



# Citroën Type H long



type H rallonge  
roue